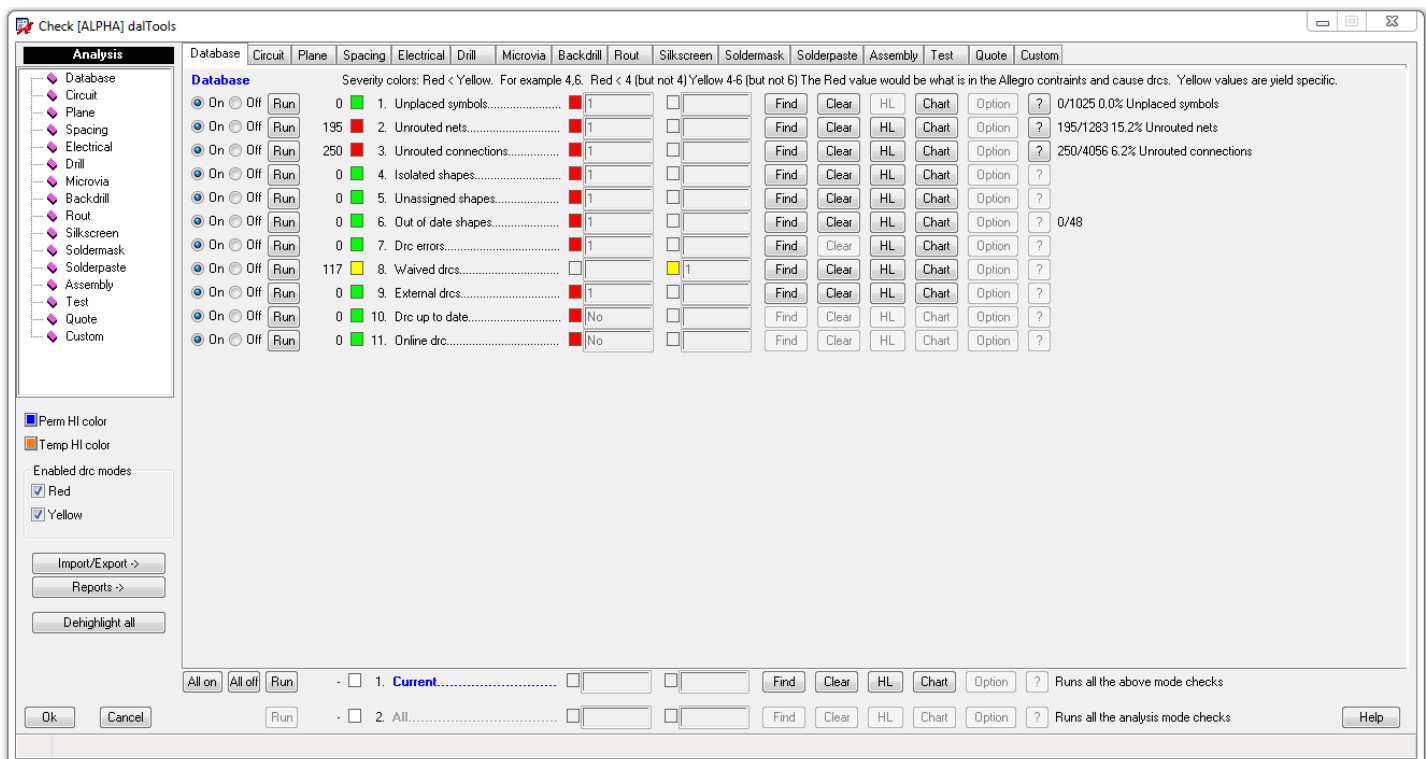


# Check (Under development for release Mid 2016)

Valor type DFM checks.

Features:

- Catches and reports errors before the fabrication shop does with Valor. This saves lots of time and money.
- All errors are flagged with external DRCS inside Allegro.
- Quickly find and highlight drc objects.
- Charts the DRC ranges.
- Import and export DRC rule constraints.
- Single run rule or batch checks.
- Easy to use and intuitive user interface.
- Validation gates.



# Circuit

Check [ALPHA] daTools

**Analysis**

- Database
- Circuit**
- Plane
- Spacing
- Electrical
- Drill
- Microvia
- Backdrill
- Rout
- Silkscreen
- Soldermask
- Solderpaste
- Assembly
- Test
- Quote
- Custom

Database | Circuit | Plane | Spacing | Electrical | Drill | Microvia | Backdrill | Rout | Silkscreen | Soldermask | Solderpaste | Assembly | Test | Quote | Custom

**Circuit**

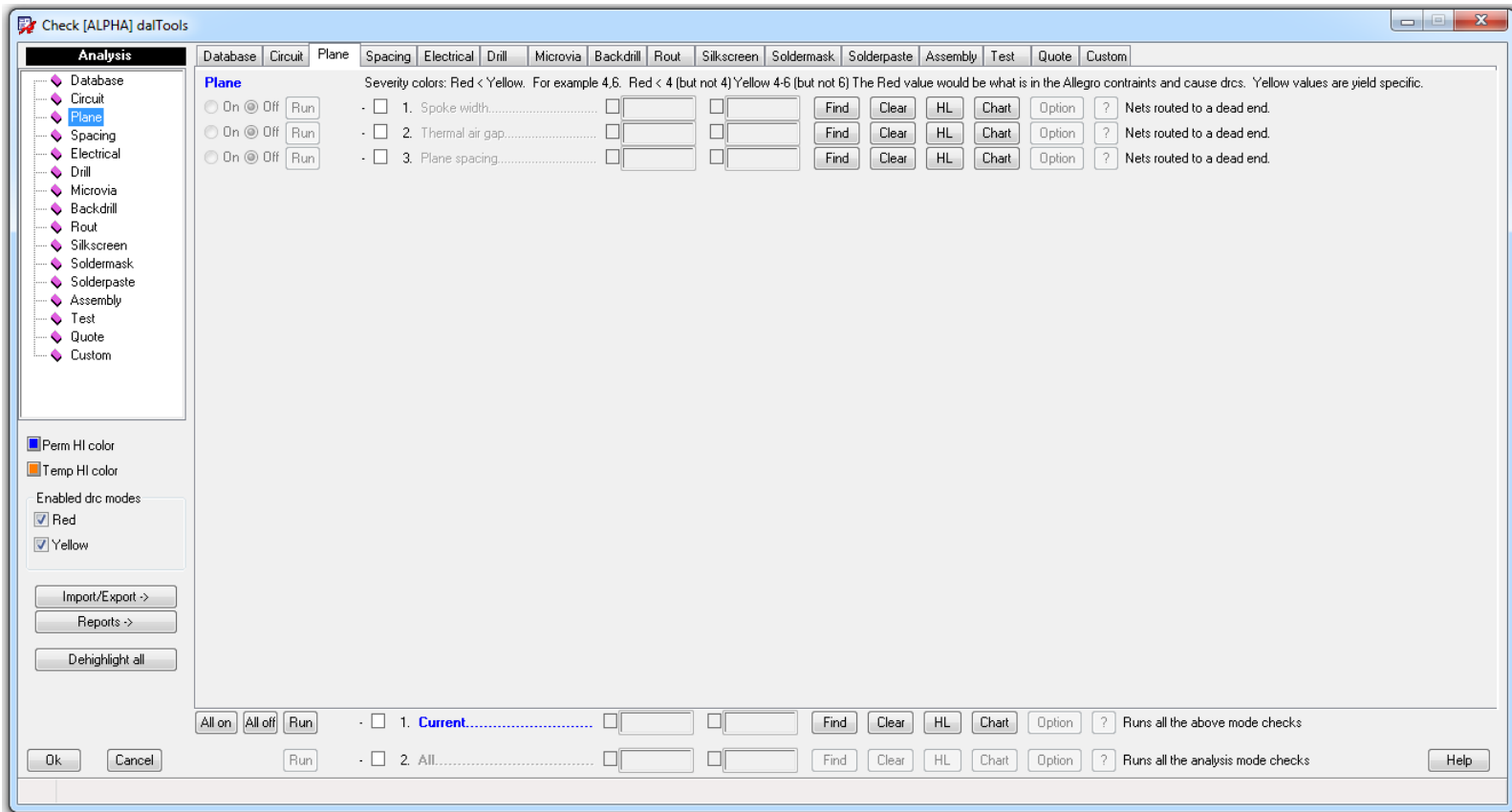
Severity colors: Red < Yellow. For example 4,6. Red < 4 (but not 4) Yellow 4-6 (but not 6) The Red value would be what is in the Allegro constraints and cause drcs. Yellow values are yield specific.

<input type="radio"/> On <input checked="" type="radio"/> Off	Run	<input type="checkbox"/>	1. Netlist analyzer.....	<input type="text"/>	<input type="text"/>	Find	Clear	HL	Chart	Option	?	Short/open report per extracted artwork layers.
<input type="radio"/> On <input checked="" type="radio"/> Off	Run	<input type="checkbox"/>	2. Film checks.....	<input type="text"/>	<input type="text"/>	Find	Clear	HL	Chart	Option	?	Checks film records vs database layers.
<input type="radio"/> On <input checked="" type="radio"/> Off	Run	<input type="checkbox"/>	3. Min line width.....	<input type="text"/>	<input type="text"/>	Find	Clear	HL	Chart	Option	?	
<input type="radio"/> On <input checked="" type="radio"/> Off	Run	<input type="checkbox"/>	4. Acid traps.....	<input type="text"/>	<input type="text"/>	Find	Clear	HL	Chart	Option	?	
<input type="radio"/> On <input checked="" type="radio"/> Off	Run	<input type="checkbox"/>	5. Dangling lines.....	<input type="text"/>	<input type="text"/>	Find	Clear	HL	Chart	Option	?	
<input type="radio"/> On <input checked="" type="radio"/> Off	Run	<input type="checkbox"/>	6. Isolated vias.....	<input type="text"/>	<input type="text"/>	Find	Clear	HL	Chart	Option	?	
<input type="radio"/> On <input checked="" type="radio"/> Off	Run	<input type="checkbox"/>	7. Single pin nets.....	<input type="text"/>	<input type="text"/>	Find	Clear	HL	Chart	Option	?	Nets with only one pin.
<input type="radio"/> On <input checked="" type="radio"/> Off	Run	<input type="checkbox"/>	8. Duplicate paths.....	<input type="text"/>	<input type="text"/>	Find	Clear	HL	Chart	Option	?	Nets routed multiple ways.
<input type="radio"/> On <input checked="" type="radio"/> Off	Run	<input type="checkbox"/>	9. Antenna routes.....	<input type="text"/>	<input type="text"/>	Find	Clear	HL	Chart	Option	?	Nets routed to a dead end.
<input type="radio"/> On <input checked="" type="radio"/> Off	Run	<input type="checkbox"/>	10. Min etch text size.....	<input type="text"/>	<input type="text"/>	Find	Clear	HL	Chart	Option	?	Nets routed to a dead end.
<input type="radio"/> On <input checked="" type="radio"/> Off	Run	<input type="checkbox"/>	11. Slivers.....	<input type="text"/>	<input type="text"/>	Find	Clear	HL	Chart	Option	?	Nets routed to a dead end.
<input type="radio"/> On <input checked="" type="radio"/> Off	Run	<input type="checkbox"/>	12. Zero width or too thin features....	<input type="text"/>	<input type="text"/>	Find	Clear	HL	Chart	Option	?	Nets routed to a dead end.

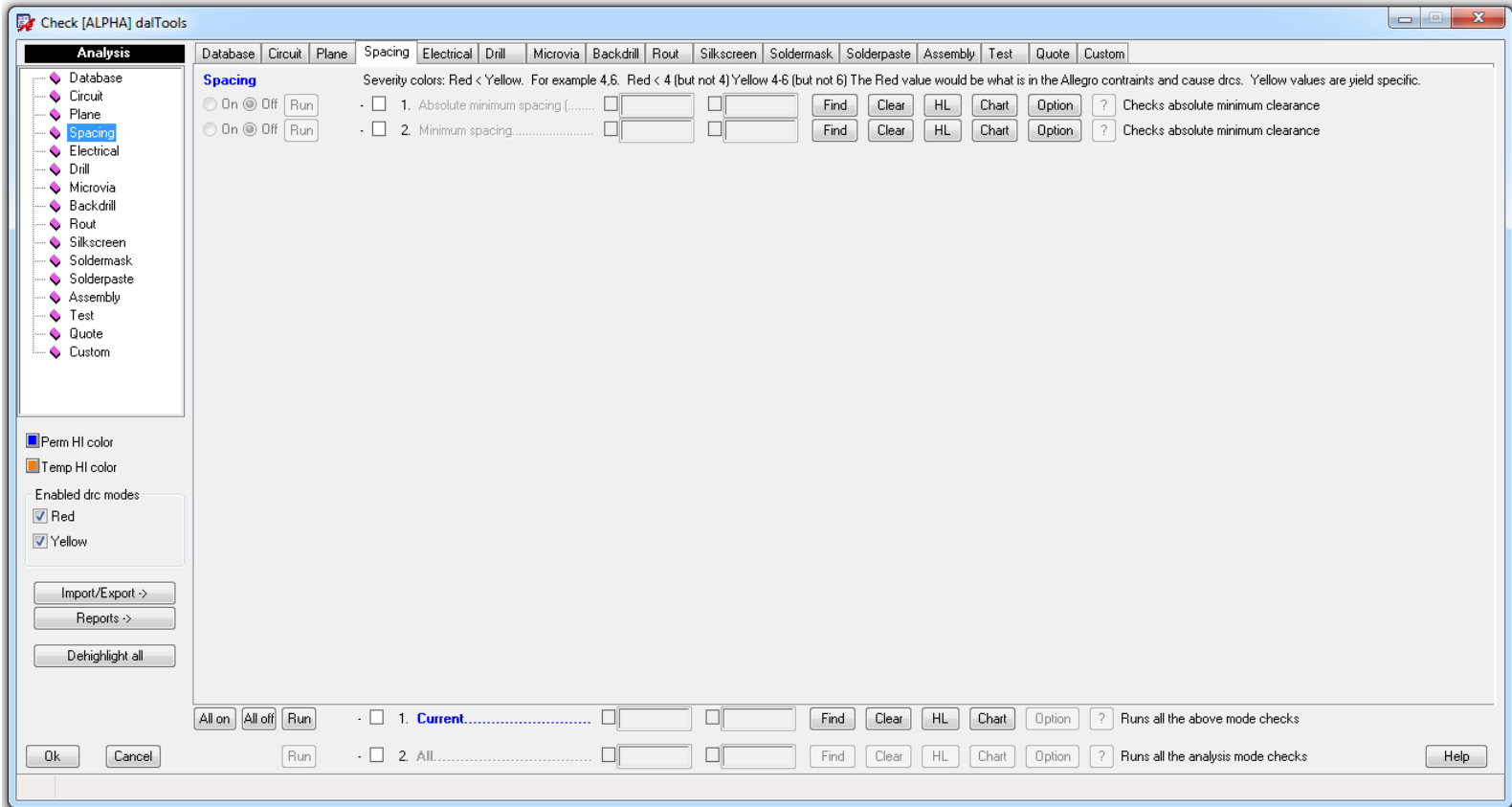
Perm HI color  
 Temp HI color  
 Enabled drc modes  
 Red  
 Yellow

<input type="radio"/> All on	<input type="radio"/> All off	Run	<input type="checkbox"/>	1. Current.....	<input type="text"/>	<input type="text"/>	Find	Clear	HL	Chart	Option	?	Runs all the above mode checks
<input type="radio"/> All on	<input type="radio"/> All off	Run	<input type="checkbox"/>	2. All.....	<input type="text"/>	<input type="text"/>	Find	Clear	HL	Chart	Option	?	Runs all the analysis mode checks

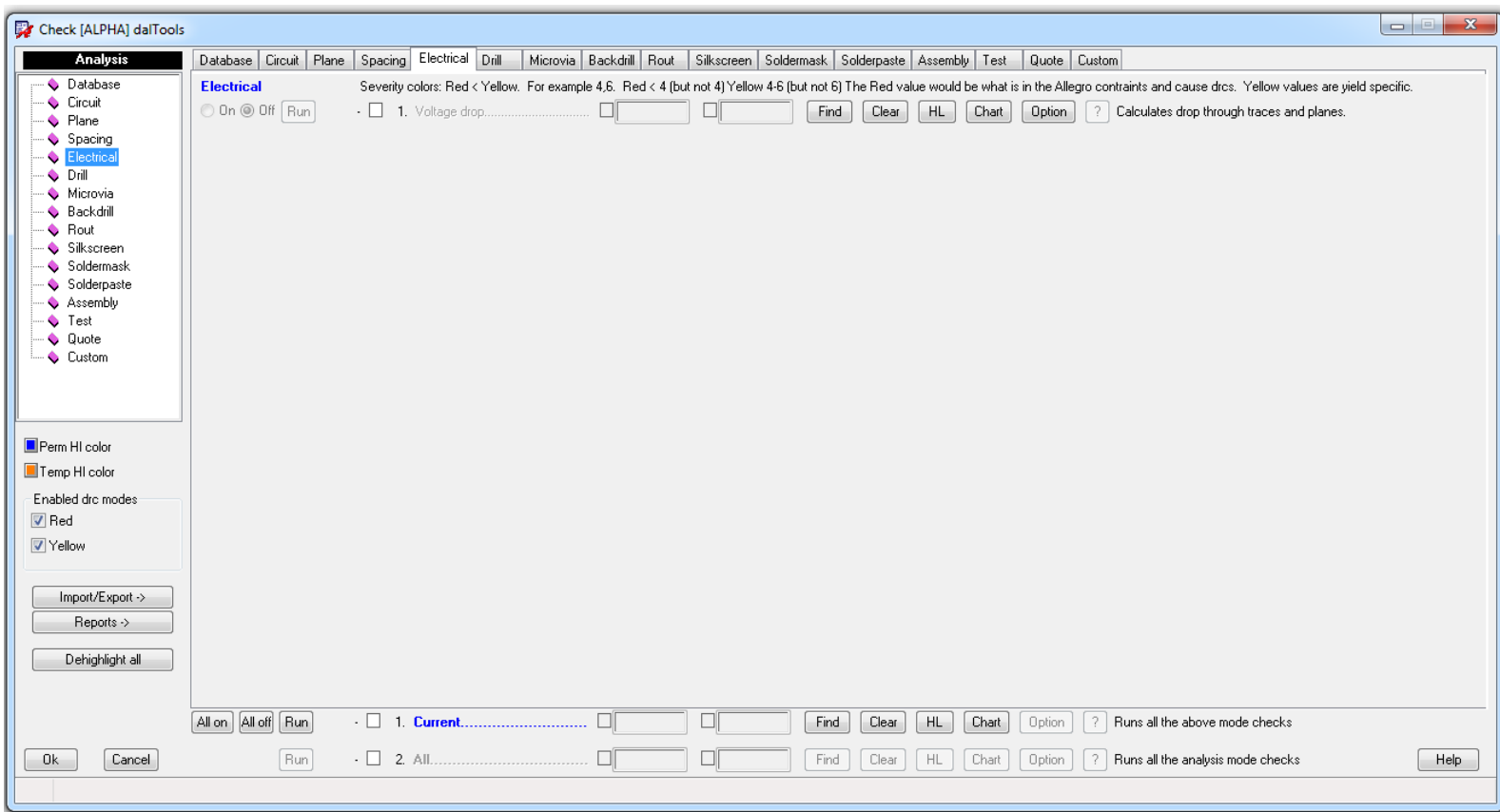
# Plane



# Spacing



# Electrical



# Drill

Check [ALPHA] dalTools

Analysis Database Circuit Plane Spacing Electrical **Drill** Microvia Backdrill Rout Silkscreen Soldermask Solderpaste Assembly Test Quote Custom

Database  
Circuit  
Plane  
Spacing  
Electrical  
**Drill**  
Microvia  
Backdrill  
Rout  
Silkscreen  
Soldermask  
Solderpaste  
Assembly  
Test  
Quote  
Custom

Perm HI color  
Temp HI color

Enabled drc modes  
 Red  
 Yellow

Import/Export ->  
Reports ->  
Dehighlight all

**Drill**

Severity colors: Red < Yellow. For example 4.6. Red < 4 (but not 4) Yellow 4-6 (but not 6) The Red value would be what is in the Allegro constraints and cause drcs. Yellow values are yield specific.

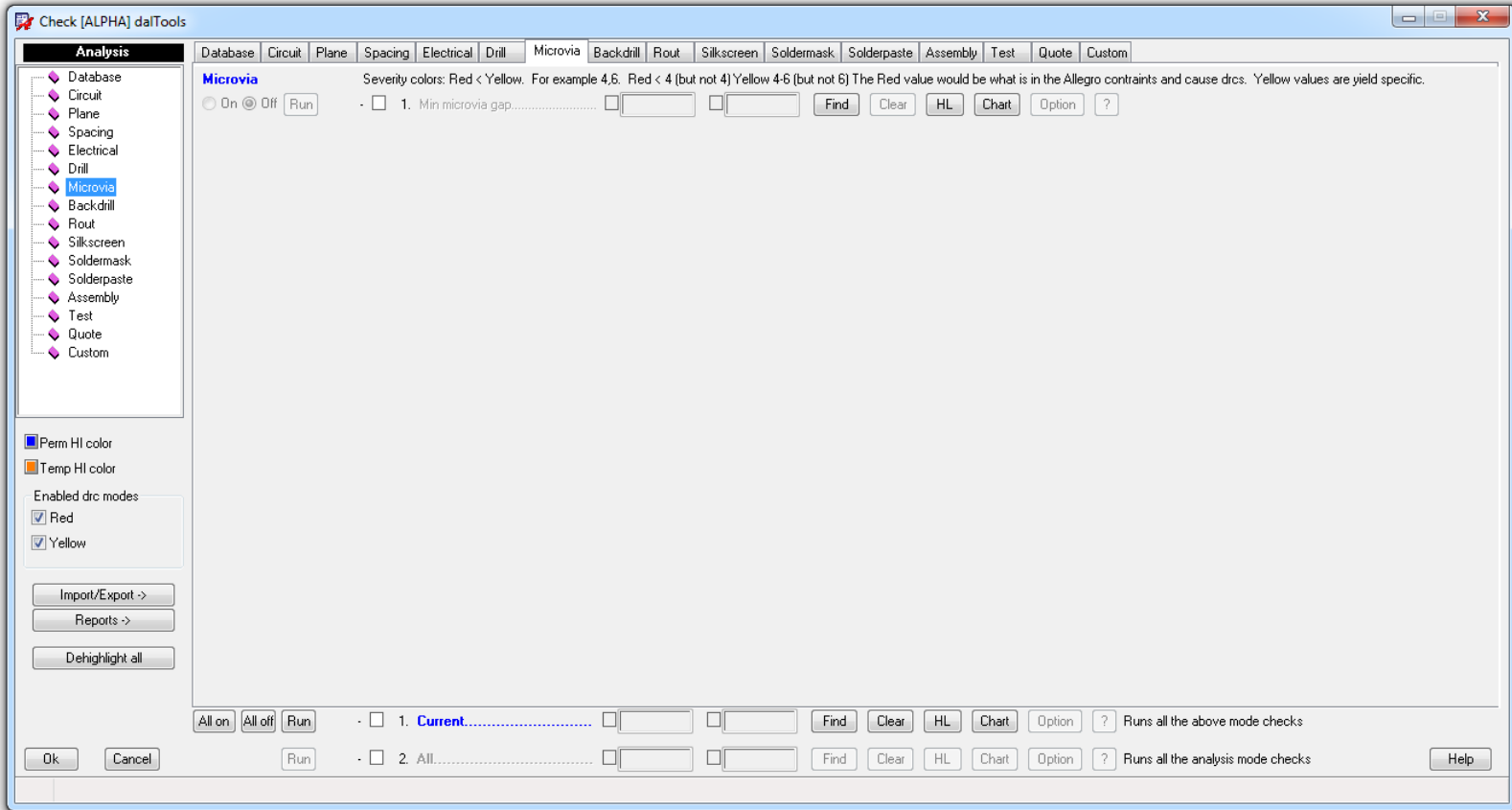
<input type="radio"/> On <input checked="" type="radio"/> Off	Run	<input type="checkbox"/>	1. Max aspect ratio.....	<input type="text"/>	<input type="text"/>	Find	Clear	HL	Chart	Option	?
<input type="radio"/> On <input checked="" type="radio"/> Off	Run	<input type="checkbox"/>	2. Drill chart up to date.....	<input type="text"/>	<input type="text"/>	Find	Clear	HL	Chart	Option	?
<input checked="" type="radio"/> On <input type="radio"/> Off	Run	<input type="checkbox"/>	3. PTH annular ring.....	8.00	9.00	Find	Clear	HL	Chart	Option	?
<input type="radio"/> On <input checked="" type="radio"/> Off	Run	<input type="checkbox"/>	4. Minimum drill size.....	<input type="text"/>	<input type="text"/>	Find	Clear	HL	Chart	Option	?
<input type="radio"/> On <input checked="" type="radio"/> Off	Run	<input type="checkbox"/>	5. Maximum drill size.....	<input type="text"/>	<input type="text"/>	Find	Clear	HL	Chart	Option	?
<input type="radio"/> On <input checked="" type="radio"/> Off	Run	<input type="checkbox"/>	6. Duplicate drill size.....	<input type="text"/>	<input type="text"/>	Find	Clear	HL	Chart	Option	?
<input type="radio"/> On <input checked="" type="radio"/> Off	Run	<input type="checkbox"/>	7. Duplicate drill location.....	<input type="text"/>	<input type="text"/>	Find	Clear	HL	Chart	Option	?
<input type="radio"/> On <input checked="" type="radio"/> Off	Run	<input type="checkbox"/>	8. Hole to hole spacing.....	<input type="text"/>	<input type="text"/>	Find	Clear	HL	Chart	Option	?
<input type="radio"/> On <input checked="" type="radio"/> Off	Run	<input type="checkbox"/>	9. Non plated drill to copper.....	<input type="text"/>	<input type="text"/>	Find	Clear	HL	Chart	Option	?
<input type="radio"/> On <input checked="" type="radio"/> Off	Run	<input type="checkbox"/>	10. Plated drill to copper.....	<input type="text"/>	<input type="text"/>	Find	Clear	HL	Chart	Option	?
<input type="radio"/> On <input checked="" type="radio"/> Off	Run	<input type="checkbox"/>	11. PTH Summary (Hole Size).....	<input type="text"/>	<input type="text"/>	Find	Clear	HL	Chart	Option	?
<input type="radio"/> On <input checked="" type="radio"/> Off	Run	<input type="checkbox"/>	12. NPTH Summary (Hole Size).....	<input type="text"/>	<input type="text"/>	Find	Clear	HL	Chart	Option	?
<input type="radio"/> On <input checked="" type="radio"/> Off	Run	<input type="checkbox"/>	13. Via Summary (Hole Size).....	<input type="text"/>	<input type="text"/>	Find	Clear	HL	Chart	Option	?
<input type="radio"/> On <input checked="" type="radio"/> Off	Run	<input type="checkbox"/>	14. Tooling Holes (Hole Size).....	<input type="text"/>	<input type="text"/>	Find	Clear	HL	Chart	Option	?
<input type="radio"/> On <input checked="" type="radio"/> Off	Run	<input type="checkbox"/>	15. Mounting Holes (Hole Size).....	<input type="text"/>	<input type="text"/>	Find	Clear	HL	Chart	Option	?
<input type="radio"/> On <input checked="" type="radio"/> Off	Run	<input type="checkbox"/>	16. Close Holes (Hole Separation).....	<input type="text"/>	<input type="text"/>	Find	Clear	HL	Chart	Option	?
<input type="radio"/> On <input checked="" type="radio"/> Off	Run	<input type="checkbox"/>	17. Missing Holes.....	<input type="text"/>	<input type="text"/>	Find	Clear	HL	Chart	Option	?
<input type="radio"/> On <input checked="" type="radio"/> Off	Run	<input type="checkbox"/>	18. Extra Holes.....	<input type="text"/>	<input type="text"/>	Find	Clear	HL	Chart	Option	?
<input type="radio"/> On <input checked="" type="radio"/> Off	Run	<input type="checkbox"/>	19. Touching holes.....	<input type="text"/>	<input type="text"/>	Find	Clear	HL	Chart	Option	?
<input type="radio"/> On <input checked="" type="radio"/> Off	Run	<input type="checkbox"/>	20. Non standard holes.....	<input type="text"/>	<input type="text"/>	Find	Clear	HL	Chart	Option	?
<input type="radio"/> On <input checked="" type="radio"/> Off	Run	<input type="checkbox"/>	21. Isolated holes.....	<input type="text"/>	<input type="text"/>	Find	Clear	HL	Chart	Option	?

All on All off Run

<input type="checkbox"/>	1. Current.....	<input type="text"/>	<input type="text"/>	Find	Clear	HL	Chart	Option	?	Runs all the above mode checks
<input type="checkbox"/>	2. All.....	<input type="text"/>	<input type="text"/>	Find	Clear	HL	Chart	Option	?	Runs all the analysis mode checks

Ok Cancel Run Help

# Microvia



# Backdrill

dal check \*Note: [This is preliminary ALPHA software]

**Analysis**

- Database
- Circuit
- Plane
- Spacing
- Electrical
- Drill
- Microvia
- Backdrill
- Rout
- Silkscreen
- Soldermask
- Solderpaste
- Assembly
- Test
- Quote
- Custom

Perm HI color  
 Temp HI color  
 Enabled drc modes  
 Red  
 Yellow

Import/Export ->  
Reports ->  
Dehighlight all

Database | Circuit | Plane | Spacing | Electrical | Drill | Microvia | **Backdrill** | Rout | Silkscreen | Soldermask | Solderpaste | Assembly | Test | Quote | Custom

**Backdrill**

Severity colors: Red < Yellow. For example: Red < 4 (but not 4) Yellow 4-6 (but not 6) The Red value would be what is in the Allegro constraints and cause drcs. Yellow values are yield specific.

<input type="radio"/> On <input checked="" type="radio"/> Off	<input type="button" value="Run"/>	0	<input type="checkbox"/>	1. Backdrill span too small.....	<input type="text"/>	<input type="text"/>	<input type="button" value="Find"/>	<input type="button" value="Clear"/>	<input type="button" value="HL"/>	<input type="button" value="Chart"/>	<input type="button" value="Option"/>	<input type="button" value="?"/>
<input type="radio"/> On <input checked="" type="radio"/> Off	<input type="button" value="Run"/>	0	<input type="checkbox"/>	2. Backdrill span too big.....	<input type="text"/>	<input type="text"/>	<input type="button" value="Find"/>	<input type="button" value="Clear"/>	<input type="button" value="HL"/>	<input type="button" value="Chart"/>	<input type="button" value="Option"/>	<input type="button" value="?"/>
<input type="radio"/> On <input checked="" type="radio"/> Off	<input type="button" value="Run"/>	0	<input type="checkbox"/>	3. Backdrill on too small via.....	<input type="text"/>	<input type="text"/>	<input type="button" value="Find"/>	<input type="button" value="Clear"/>	<input type="button" value="HL"/>	<input type="button" value="Chart"/>	<input type="button" value="Option"/>	<input type="button" value="?"/>
<input type="radio"/> On <input checked="" type="radio"/> Off	<input type="button" value="Run"/>	0	<input type="checkbox"/>	4. Backdrill on too big via.....	<input type="text"/>	<input type="text"/>	<input type="button" value="Find"/>	<input type="button" value="Clear"/>	<input type="button" value="HL"/>	<input type="button" value="Chart"/>	<input type="button" value="Option"/>	<input type="button" value="?"/>
<input type="radio"/> On <input checked="" type="radio"/> Off	<input type="button" value="Run"/>	0	<input type="checkbox"/>	5. Backdrill oversize too small.....	<input type="text"/>	<input type="text"/>	<input type="button" value="Find"/>	<input type="button" value="Clear"/>	<input type="button" value="HL"/>	<input type="button" value="Chart"/>	<input type="button" value="Option"/>	<input type="button" value="?"/>
<input type="radio"/> On <input checked="" type="radio"/> Off	<input type="button" value="Run"/>	0	<input type="checkbox"/>	6. Min BD spacing.....	<input type="text"/>	<input type="text"/>	<input type="button" value="Find"/>	<input type="button" value="Clear"/>	<input type="button" value="HL"/>	<input type="button" value="Chart"/>	<input type="button" value="Option"/>	<input type="button" value="?"/>
<input type="radio"/> On <input checked="" type="radio"/> Off	<input type="button" value="Run"/>	0	<input type="checkbox"/>	7. Backdrill Pos AR.....	<input type="text"/>	<input type="text"/>	<input type="button" value="Find"/>	<input type="button" value="Clear"/>	<input type="button" value="HL"/>	<input type="button" value="Chart"/>	<input type="button" value="Option"/>	<input type="button" value="?"/>
<input type="radio"/> On <input checked="" type="radio"/> Off	<input type="button" value="Run"/>	0	<input type="checkbox"/>	8. Backdrill Neg AR.....	<input type="text"/>	<input type="text"/>	<input type="button" value="Find"/>	<input type="button" value="Clear"/>	<input type="button" value="HL"/>	<input type="button" value="Chart"/>	<input type="button" value="Option"/>	<input type="button" value="?"/>

0	<input type="checkbox"/>	1. <b>Current</b> .....	<input type="text"/>	<input type="text"/>	<input type="button" value="Find"/>	<input type="button" value="Clear"/>	<input type="button" value="HL"/>	<input type="button" value="Chart"/>	<input type="button" value="Option"/>	<input type="button" value="?"/>	Runs all the above mode checks
0	<input type="checkbox"/>	2. All.....	<input type="text"/>	<input type="text"/>	<input type="button" value="Find"/>	<input type="button" value="Clear"/>	<input type="button" value="HL"/>	<input type="button" value="Chart"/>	<input type="button" value="Option"/>	<input type="button" value="?"/>	Runs all the analysis mode checks



# Rout

Check [ALPHA] daTools

**Analysis**

- Database
- Circuit
- Plane
- Spacing
- Electrical
- Drill
- Microvia
- Backdrill
- Rout**
- Silkscreen
- Soldermask
- Solderpaste
- Assembly
- Test
- Quote
- Custom

Database | Circuit | Plane | Spacing | Electrical | Drill | Microvia | Backdrill | **Rout** | Silkscreen | Soldermask | Solderpaste | Assembly | Test | Quote | Custom

**Rout** Severity colors: Red < Yellow. For example 4,6. Red < 4 (but not 4) Yellow 4-6 (but not 6) The Red value would be what is in the Allegro constraints and cause drcs. Yellow values are yield specific.

<input type="radio"/> On <input checked="" type="radio"/> Off	Run	- <input type="checkbox"/> 1. Rout to Copper.....	<input type="text"/>	<input type="text"/>	Find	Clear	HL	Chart	Option	?
<input type="radio"/> On <input checked="" type="radio"/> Off	Run	- <input type="checkbox"/> 2. Rout outline chain.....	<input type="text"/>	<input type="text"/>	Find	Clear	HL	Chart	Option	?
<input type="radio"/> On <input checked="" type="radio"/> Off	Run	- <input type="checkbox"/> 3. NPPTH to Rout.....	<input type="text"/>	<input type="text"/>	Find	Clear	HL	Chart	Option	?
<input type="radio"/> On <input checked="" type="radio"/> Off	Run	- <input type="checkbox"/> 4. Slot to Rout.....	<input type="text"/>	<input type="text"/>	Find	Clear	HL	Chart	Option	?
<input type="radio"/> On <input checked="" type="radio"/> Off	Run	- <input type="checkbox"/> 5. Small arc.....	<input type="text"/>	<input type="text"/>	Find	Clear	HL	Chart	Option	?
<input type="radio"/> On <input checked="" type="radio"/> Off	Run	- <input type="checkbox"/> 6. Short arc.....	<input type="text"/>	<input type="text"/>	Find	Clear	HL	Chart	Option	?
<input type="radio"/> On <input checked="" type="radio"/> Off	Run	- <input type="checkbox"/> 7. Short line.....	<input type="text"/>	<input type="text"/>	Find	Clear	HL	Chart	Option	?
<input type="radio"/> On <input checked="" type="radio"/> Off	Run	- <input type="checkbox"/> 8. Too narrow.....	<input type="text"/>	<input type="text"/>	Find	Clear	HL	Chart	Option	?
<input type="radio"/> On <input checked="" type="radio"/> Off	Run	- <input type="checkbox"/> 9. Intersection.....	<input type="text"/>	<input type="text"/>	Find	Clear	HL	Chart	Option	?

Perm HI color  
 Temp HI color  
 Enabled drc modes  
 Red  
 Yellow

Import/Export ->  
Reports ->  
Dehighlight all

All on  All off  Run  
 1. **Current**.....   Find Clear HL Chart Option ? Runs all the above mode checks  
 2. All.....   Find Clear HL Chart Option ? Runs all the analysis mode checks

Ok Cancel Run Help

# Silkscreen

Check [ALPHA] daTools

Database | Circuit | Plane | Spacing | Electrical | Drill | Microvia | Backdrill | Rout | **Silkscreen** | Soldermask | Solderpaste | Assembly | Test | Quote | Custom

**Analysis**

- Database
- Circuit
- Plane
- Spacing
- Electrical
- Drill
- Microvia
- Backdrill
- Rout
- Silkscreen**
- Soldermask
- Solderpaste
- Assembly
- Test
- Quote
- Custom

**Silkscreen**

Severity colors: Red < Yellow. For example 4.6. Red < 4 (but not 4) Yellow 4-6 (but not 6) The Red value would be what is in the Allegro constraints and cause drcs. Yellow values are yield specific.

<input type="radio"/> On <input checked="" type="radio"/> Off	<input type="button" value="Run"/>	<input type="checkbox"/>	1. Text to soldermask clearance.....	<input type="text"/>	<input type="text"/>	<input type="button" value="Find"/>	<input type="button" value="Clear"/>	<input type="button" value="HL"/>	<input type="button" value="Chart"/>	<input type="button" value="Option"/>	<input type="button" value="?"/>
<input type="radio"/> On <input checked="" type="radio"/> Off	<input type="button" value="Run"/>	<input type="checkbox"/>	2. Text to via or pad.....	<input type="text"/>	<input type="text"/>	<input type="button" value="Find"/>	<input type="button" value="Clear"/>	<input type="button" value="HL"/>	<input type="button" value="Chart"/>	<input type="button" value="Option"/>	<input type="button" value="?"/>
<input type="radio"/> On <input checked="" type="radio"/> Off	<input type="button" value="Run"/>	<input type="checkbox"/>	3. Text to text.....	<input type="text"/>	<input type="text"/>	<input type="button" value="Find"/>	<input type="button" value="Clear"/>	<input type="button" value="HL"/>	<input type="button" value="Chart"/>	<input type="button" value="Option"/>	<input type="button" value="?"/>
<input type="radio"/> On <input checked="" type="radio"/> Off	<input type="button" value="Run"/>	<input type="checkbox"/>	4. Minimum text height.....	<input type="text"/>	<input type="text"/>	<input type="button" value="Find"/>	<input type="button" value="Clear"/>	<input type="button" value="HL"/>	<input type="button" value="Chart"/>	<input type="button" value="Option"/>	<input type="button" value="?"/>
<input type="radio"/> On <input checked="" type="radio"/> Off	<input type="button" value="Run"/>	<input type="checkbox"/>	5. Minimum text line width.....	<input type="text"/>	<input type="text"/>	<input type="button" value="Find"/>	<input type="button" value="Clear"/>	<input type="button" value="HL"/>	<input type="button" value="Chart"/>	<input type="button" value="Option"/>	<input type="button" value="?"/>
<input type="radio"/> On <input checked="" type="radio"/> Off	<input type="button" value="Run"/>	<input type="checkbox"/>	6. Missing refdes.....	<input type="text"/>	<input type="text"/>	<input type="button" value="Find"/>	<input type="button" value="Clear"/>	<input type="button" value="HL"/>	<input type="button" value="Chart"/>	<input type="button" value="Option"/>	<input type="button" value="?"/>
<input type="radio"/> On <input checked="" type="radio"/> Off	<input type="button" value="Run"/>	<input type="checkbox"/>	7. Refdes distance.....	<input type="text"/>	<input type="text"/>	<input type="button" value="Find"/>	<input type="button" value="Clear"/>	<input type="button" value="HL"/>	<input type="button" value="Chart"/>	<input type="button" value="Option"/>	<input type="button" value="?"/>
<input type="radio"/> On <input checked="" type="radio"/> Off	<input type="button" value="Run"/>	<input type="checkbox"/>	8. Refdes wrong location.....	<input type="text"/>	<input type="text"/>	<input type="button" value="Find"/>	<input type="button" value="Clear"/>	<input type="button" value="HL"/>	<input type="button" value="Chart"/>	<input type="button" value="Option"/>	<input type="button" value="?"/>
<input type="radio"/> On <input checked="" type="radio"/> Off	<input type="button" value="Run"/>	<input type="checkbox"/>	9. Rout clearance.....	<input type="text"/>	<input type="text"/>	<input type="button" value="Find"/>	<input type="button" value="Clear"/>	<input type="button" value="HL"/>	<input type="button" value="Chart"/>	<input type="button" value="Option"/>	<input type="button" value="?"/>
<input type="radio"/> On <input checked="" type="radio"/> Off	<input type="button" value="Run"/>	<input type="checkbox"/>	10. Min line or arc width.....	<input type="text"/>	<input type="text"/>	<input type="button" value="Find"/>	<input type="button" value="Clear"/>	<input type="button" value="HL"/>	<input type="button" value="Chart"/>	<input type="button" value="Option"/>	<input type="button" value="?"/>
<input type="radio"/> On <input checked="" type="radio"/> Off	<input type="button" value="Run"/>	<input type="checkbox"/>	11. Min line width.....	<input type="text"/>	<input type="text"/>	<input type="button" value="Find"/>	<input type="button" value="Clear"/>	<input type="button" value="HL"/>	<input type="button" value="Chart"/>	<input type="button" value="Option"/>	<input type="button" value="?"/>
<input type="radio"/> On <input checked="" type="radio"/> Off	<input type="button" value="Run"/>	<input type="checkbox"/>	12. Silkscreen on text.....	<input type="text"/>	<input type="text"/>	<input type="button" value="Find"/>	<input type="button" value="Clear"/>	<input type="button" value="HL"/>	<input type="button" value="Chart"/>	<input type="button" value="Option"/>	<input type="button" value="?"/>

Perm HI color  
 Temp HI color

Enabled drc modes

Red  
 Yellow

<input type="checkbox"/>	1. <b>Current</b> .....	<input type="text"/>	<input type="text"/>	<input type="button" value="Find"/>	<input type="button" value="Clear"/>	<input type="button" value="HL"/>	<input type="button" value="Chart"/>	<input type="button" value="Option"/>	<input type="button" value="?"/>	Runs all the above mode checks
<input type="checkbox"/>	2. All.....	<input type="text"/>	<input type="text"/>	<input type="button" value="Find"/>	<input type="button" value="Clear"/>	<input type="button" value="HL"/>	<input type="button" value="Chart"/>	<input type="button" value="Option"/>	<input type="button" value="?"/>	Runs all the analysis mode checks

# Soldermask

Check [ALPHA] daTools

**Analysis**

- Database
- Circuit
- Plane
- Spacing
- Electrical
- Drill
- Microvia
- Backdrill
- Rout
- Silkscreen
- Soldermask**
- Solderpaste
- Assembly
- Test
- Quote
- Custom

Database | Circuit | Plane | Spacing | Electrical | Drill | Microvia | Backdrill | Rout | Silkscreen | **Soldermask** | Solderpaste | Assembly | Test | Quote | Custom

**Soldermask**

Severity colors: Red < Yellow. For example 4.6. Red < 4 (but not 4) Yellow 4-6 (but not 6) The Red value would be what is in the Allegro constraints and cause drcs. Yellow values are yield specific.

<input type="radio"/> On <input checked="" type="radio"/> Off	<input type="button" value="Run"/>	- <input type="checkbox"/> 1. Minimum gap.....	<input type="text"/>	<input type="text"/>	<input type="button" value="Find"/>	<input type="button" value="Clear"/>	<input type="button" value="HL"/>	<input type="button" value="Chart"/>	<input type="button" value="Option"/>	<input type="button" value="?"/>
<input type="radio"/> On <input checked="" type="radio"/> Off	<input type="button" value="Run"/>	- <input type="checkbox"/> 2. Pad alignment.....	<input type="text"/>	<input type="text"/>	<input type="button" value="Find"/>	<input type="button" value="Clear"/>	<input type="button" value="HL"/>	<input type="button" value="Chart"/>	<input type="button" value="Option"/>	<input type="button" value="?"/>
<input type="radio"/> On <input checked="" type="radio"/> Off	<input type="button" value="Run"/>	- <input type="checkbox"/> 3. Via alignment.....	<input type="text"/>	<input type="text"/>	<input type="button" value="Find"/>	<input type="button" value="Clear"/>	<input type="button" value="HL"/>	<input type="button" value="Chart"/>	<input type="button" value="Option"/>	<input type="button" value="?"/>
<input type="radio"/> On <input checked="" type="radio"/> Off	<input type="button" value="Run"/>	- <input type="checkbox"/> 4. Etch alignment.....	<input type="text"/>	<input type="text"/>	<input type="button" value="Find"/>	<input type="button" value="Clear"/>	<input type="button" value="HL"/>	<input type="button" value="Chart"/>	<input type="button" value="Option"/>	<input type="button" value="?"/>
<input type="radio"/> On <input checked="" type="radio"/> Off	<input type="button" value="Run"/>	- <input type="checkbox"/> 5. Drill touches mask.....	<input type="text"/>	<input type="text"/>	<input type="button" value="Find"/>	<input type="button" value="Clear"/>	<input type="button" value="HL"/>	<input type="button" value="Chart"/>	<input type="button" value="Option"/>	<input type="button" value="?"/>
<input type="radio"/> On <input checked="" type="radio"/> Off	<input type="button" value="Run"/>	- <input type="checkbox"/> 6. Coverage.....	<input type="text"/>	<input type="text"/>	<input type="button" value="Find"/>	<input type="button" value="Clear"/>	<input type="button" value="HL"/>	<input type="button" value="Chart"/>	<input type="button" value="Option"/>	<input type="button" value="?"/>
<input type="radio"/> On <input checked="" type="radio"/> Off	<input type="button" value="Run"/>	- <input type="checkbox"/> 7. No bridge.....	<input type="text"/>	<input type="text"/>	<input type="button" value="Find"/>	<input type="button" value="Clear"/>	<input type="button" value="HL"/>	<input type="button" value="Chart"/>	<input type="button" value="Option"/>	<input type="button" value="?"/>
<input type="radio"/> On <input checked="" type="radio"/> Off	<input type="button" value="Run"/>	- <input type="checkbox"/> 8. Missing.....	<input type="text"/>	<input type="text"/>	<input type="button" value="Find"/>	<input type="button" value="Clear"/>	<input type="button" value="HL"/>	<input type="button" value="Chart"/>	<input type="button" value="Option"/>	<input type="button" value="?"/>
<input type="radio"/> On <input checked="" type="radio"/> Off	<input type="button" value="Run"/>	- <input type="checkbox"/> 9. Feature too small.....	<input type="text"/>	<input type="text"/>	<input type="button" value="Find"/>	<input type="button" value="Clear"/>	<input type="button" value="HL"/>	<input type="button" value="Chart"/>	<input type="button" value="Option"/>	<input type="button" value="?"/>

Perm HI color  
 Temp HI color

Enabled drc modes

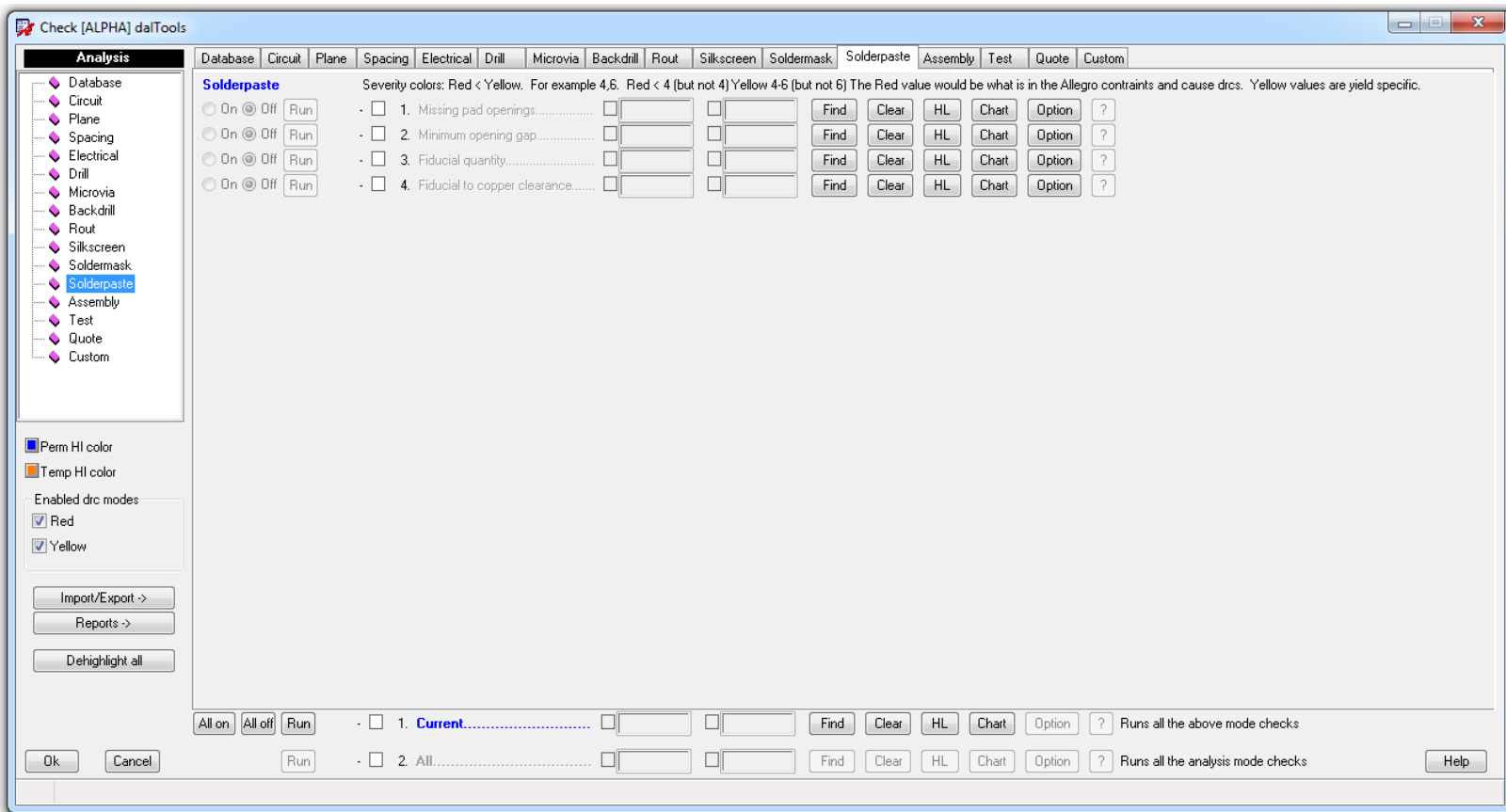
Red  
 Yellow

All on | All off |

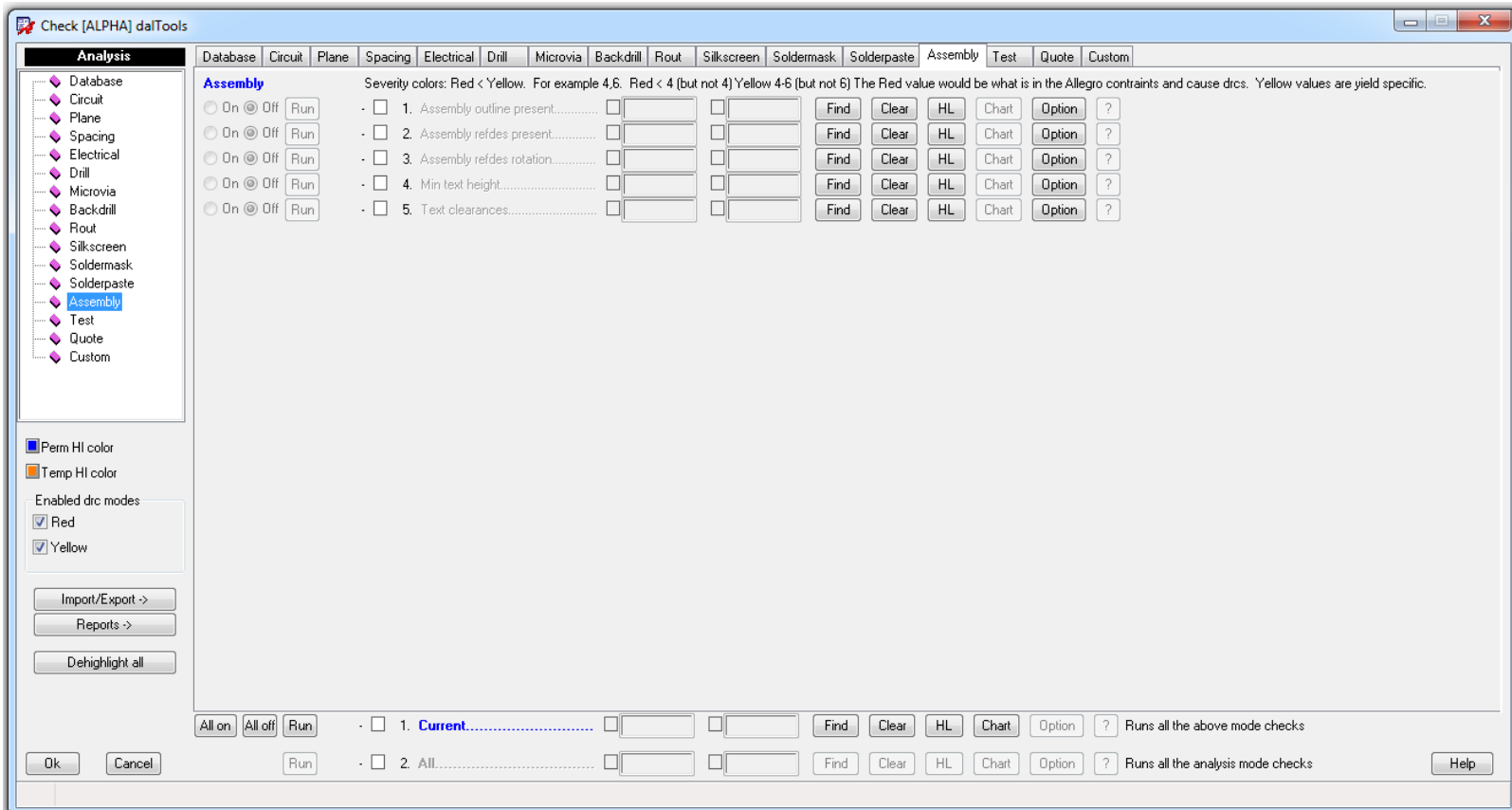
1. **Current**.....         Runs all the above mode checks

2. All.....         Runs all the analysis mode checks

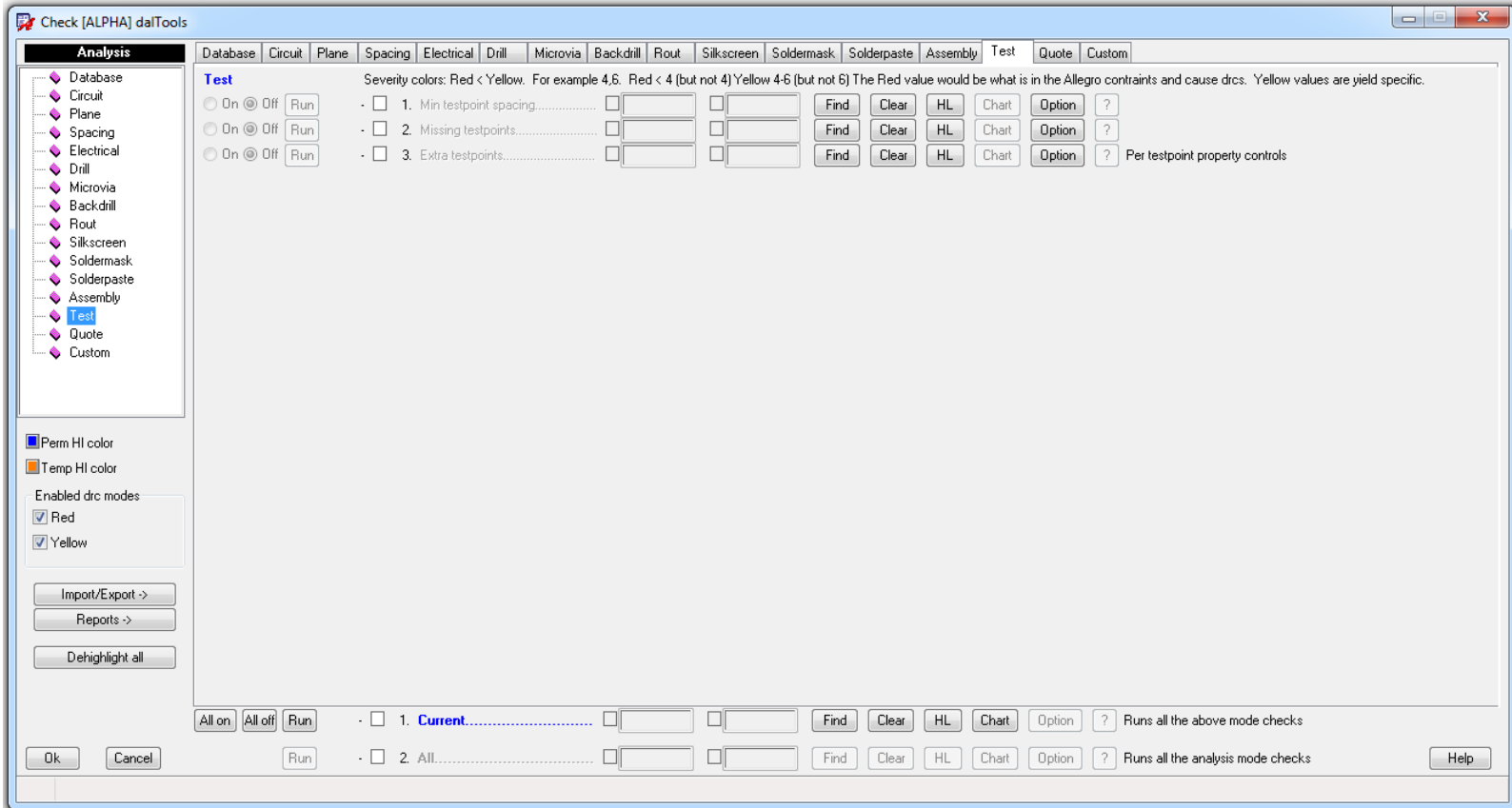
# Solderpaste



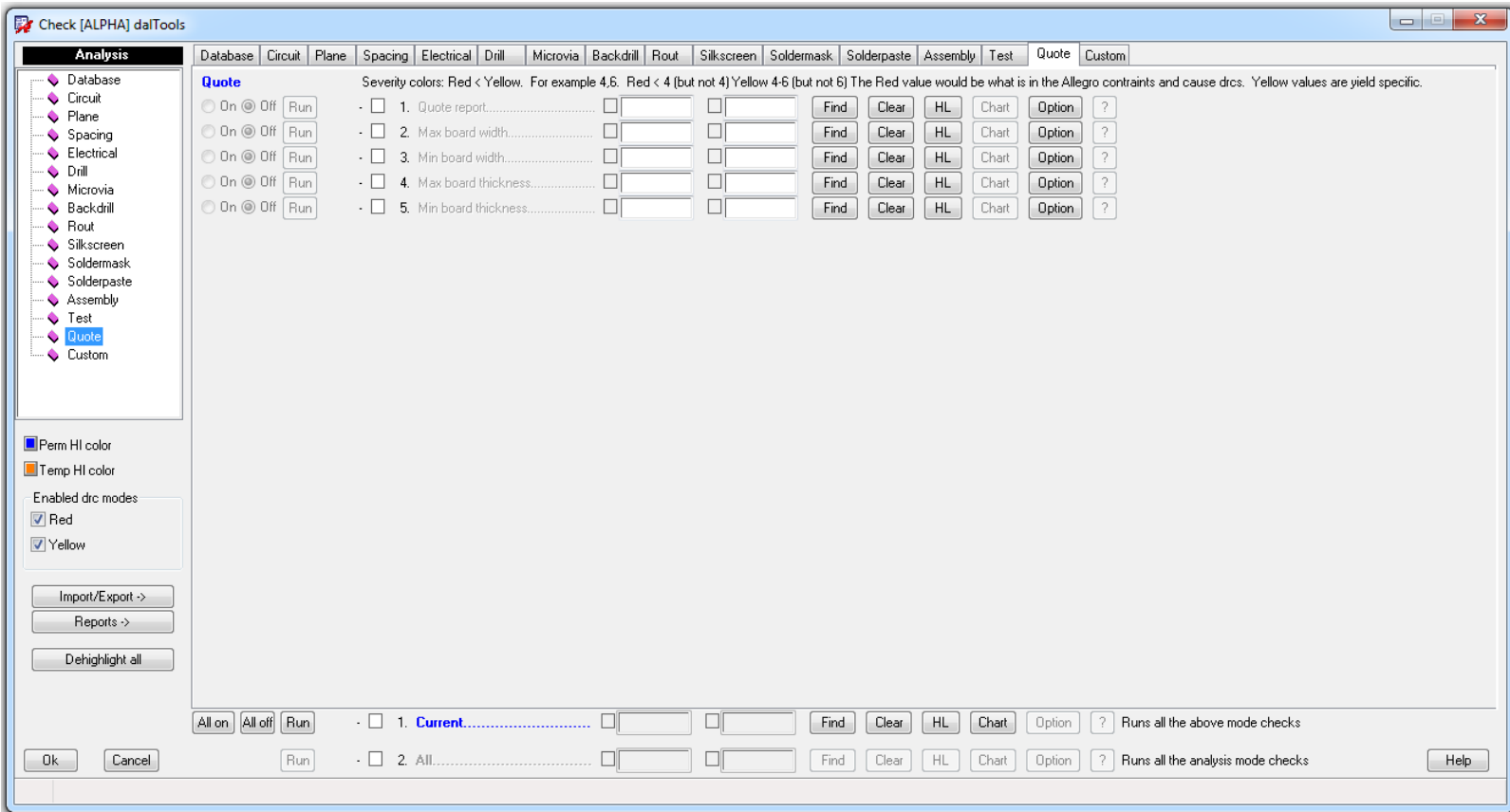
# Assembly



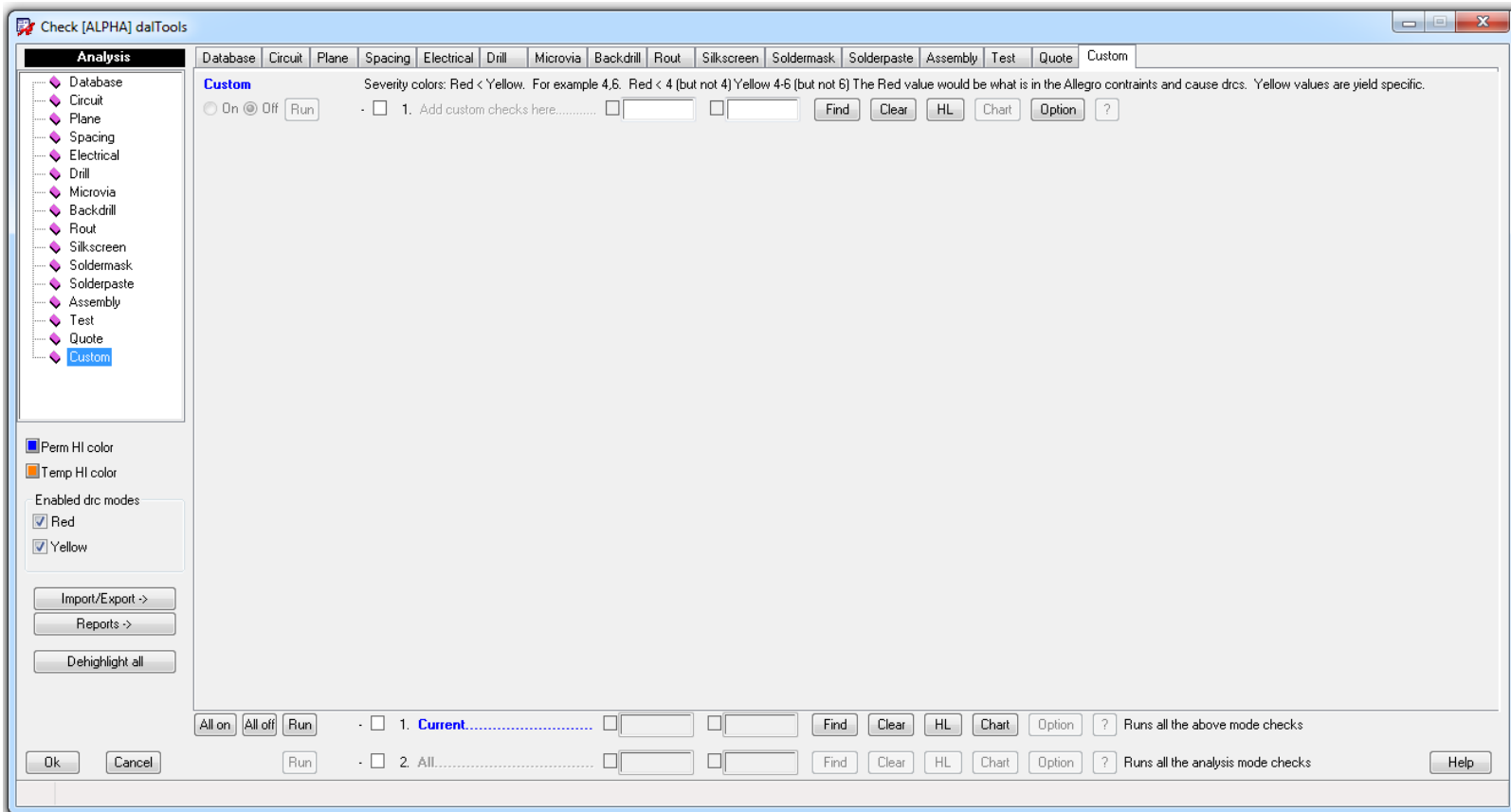
# Test



# Quote



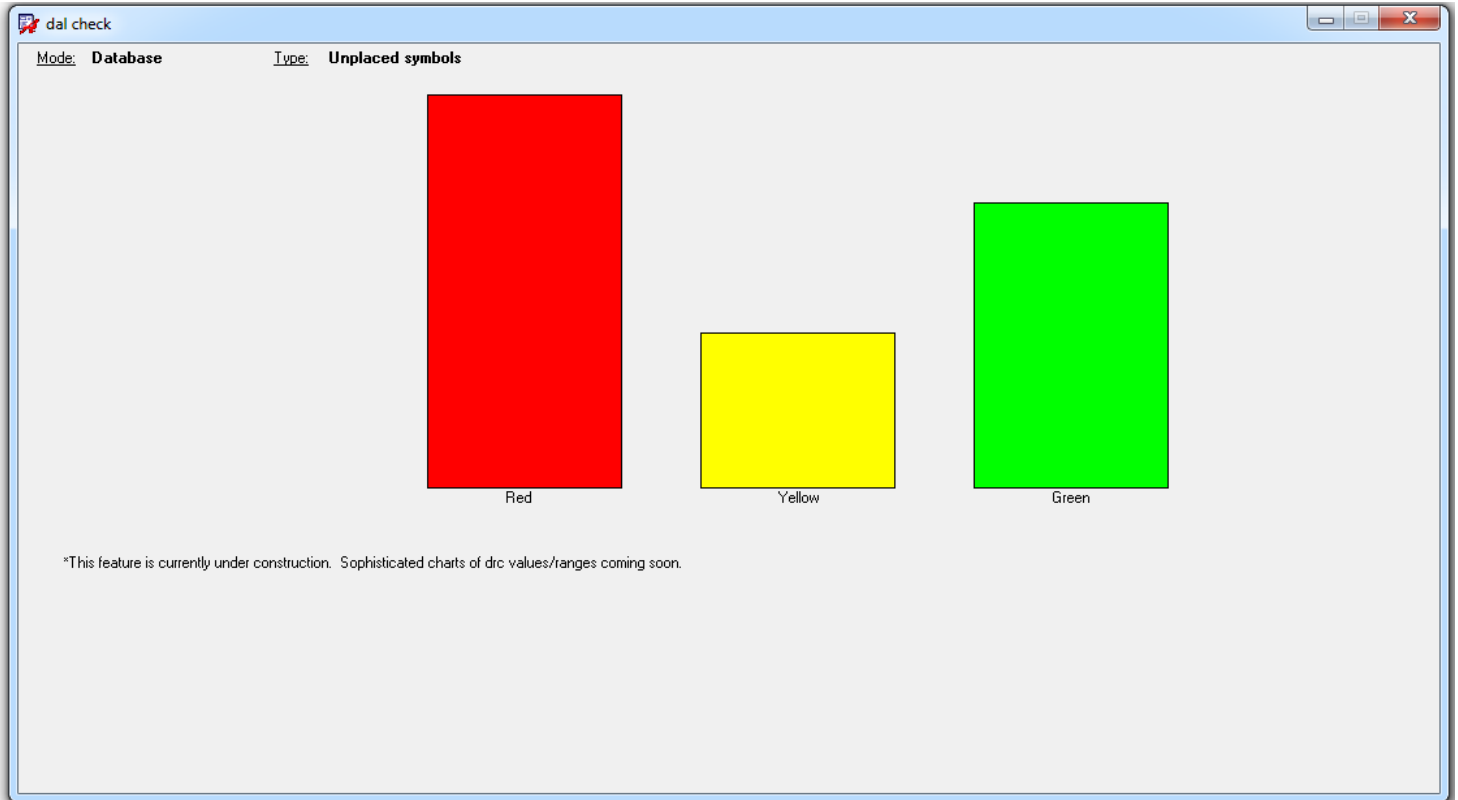
# Custom





# DRC Range Charts

---



# Help

---

