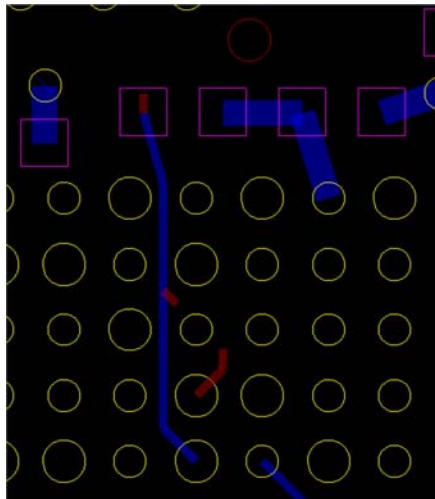


DanglingLine

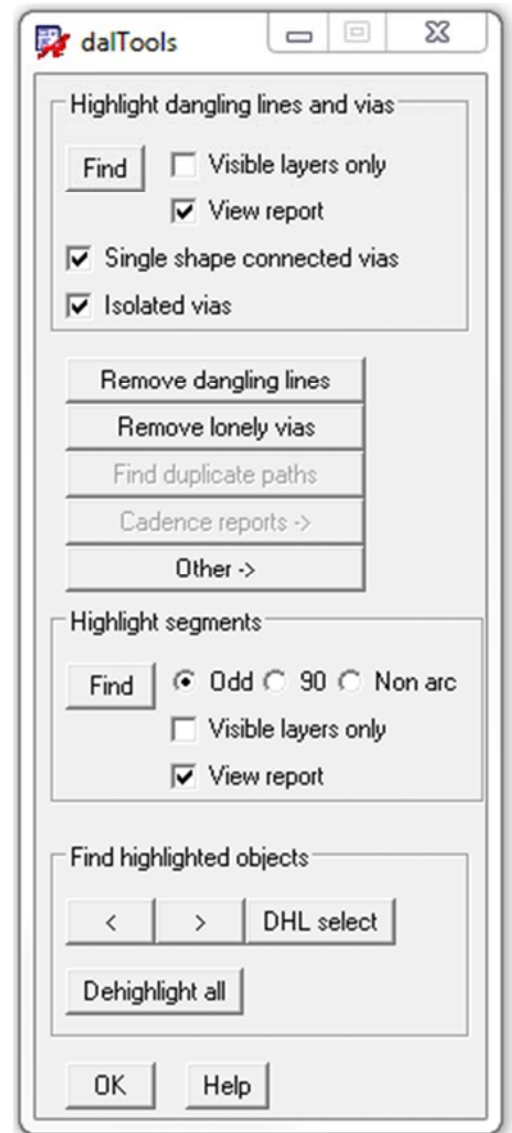
Facilitates the quick and easy removal of dangling lines and lonely vias.

Features:

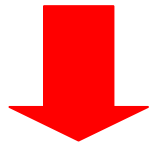
- Highlights dangling lines, lonely and isolated vias.
- Removes dangling lines and isolated vias.
- Finds odd angle line segments, 90 degree bends and non-arc segments.



[Highlighted dangling line and via](#)



Examples



```
Report
File Close Help
Dangling line/isolated via report: May 25 23:51:53 2011
*Note - Click on the coordinates in this file to zoom to the object area.

5 dangling cline(s)
1 isolated via(s)

Dangling line found on BOTTOM (2575.0 3925.0) "1R8V_NSENSE"
Dangling line found on BOTTOM (2950.0 6980.0) "NNMD_5_FMXASICFM_I102_PFMCONFIG"
Dangling line found on BOTTOM (2975.0 6900.0) "GPIO0"
Dangling line found on BOTTOM (2935.0 7115.0) "NNMD_5_FMXASICFM_I102_PFMCONFIG"
Dangling line found on BOTTOM (3340.0 4010.0) "3R3V_NSENSE"

Lonely via found at (3015.0 7170.0) TP_BOT_25_12_32
```

Report file

Help

