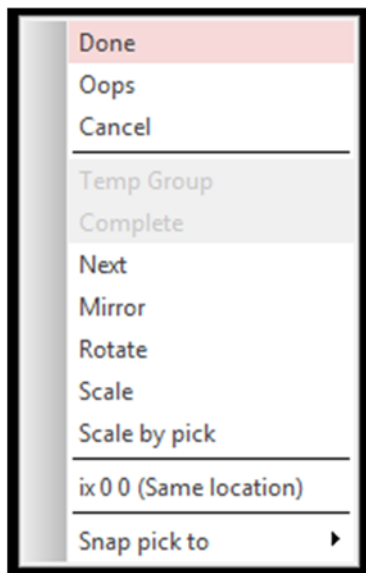
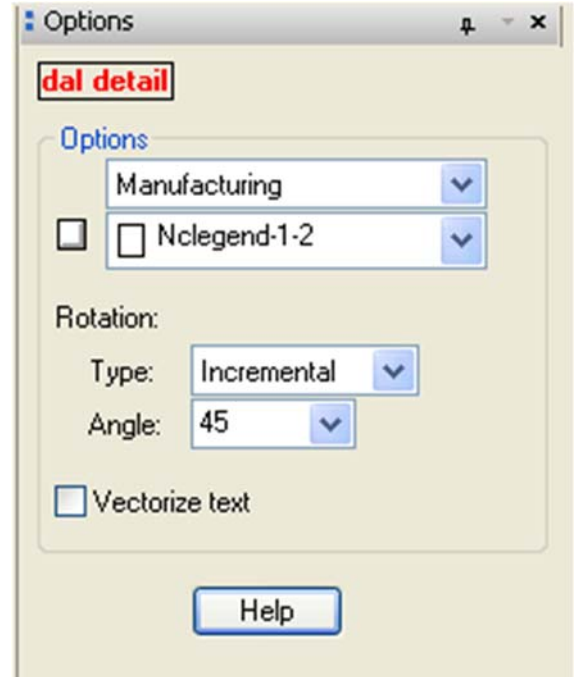


## Detail

Copy any object between any class and subclass. Create details on another layer. Includes optional scaling, rotation and mirror support. Useful for fabrication and assembly drawing details among others. Much faster than creating and loading plot files.

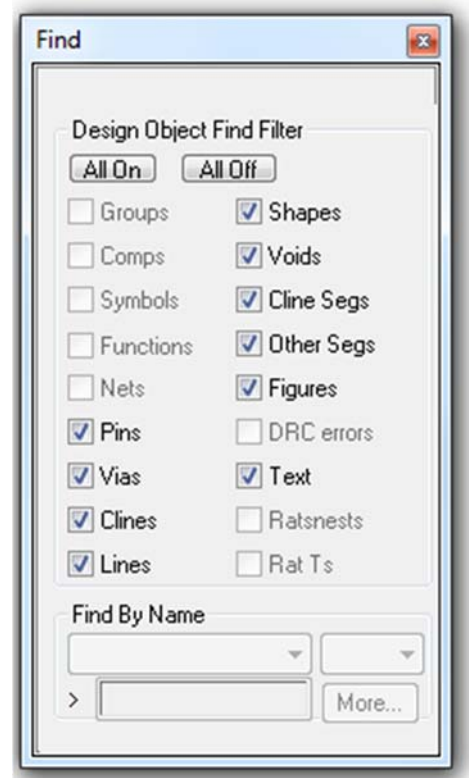
Features:

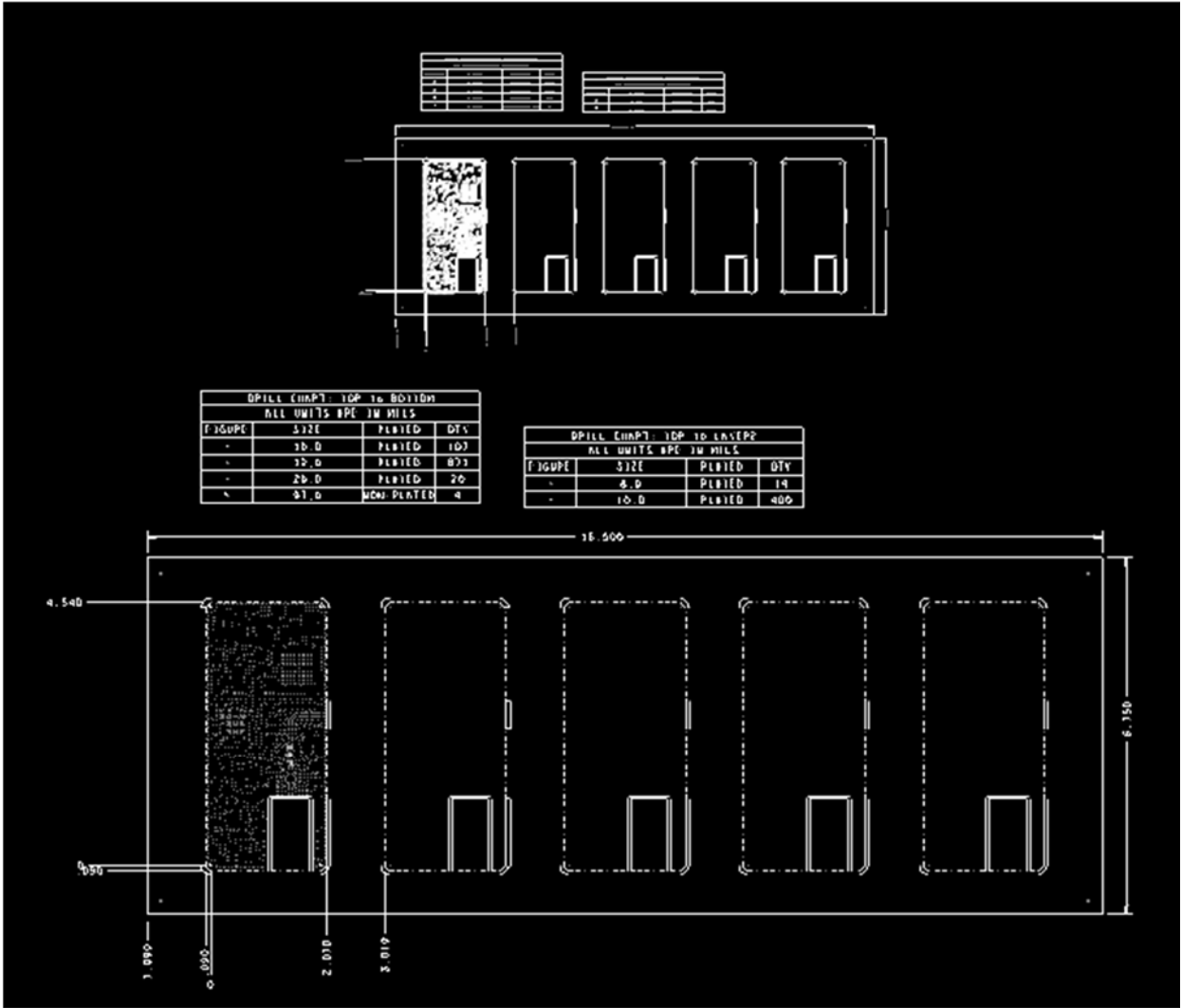
- Copies objects to any layer.
- Scale, rotate and mirror support.
- Supports drill legends and figures.
- Vectorize and text scale support.
- Faster than using create plot/load plot.
- Scale by pick feature. This scales and fits the objects inside two picks.
- Supports thin and thick text width copy and scaling.



Video demonstration available at:

[www.dalTools.com](http://www.dalTools.com) Example

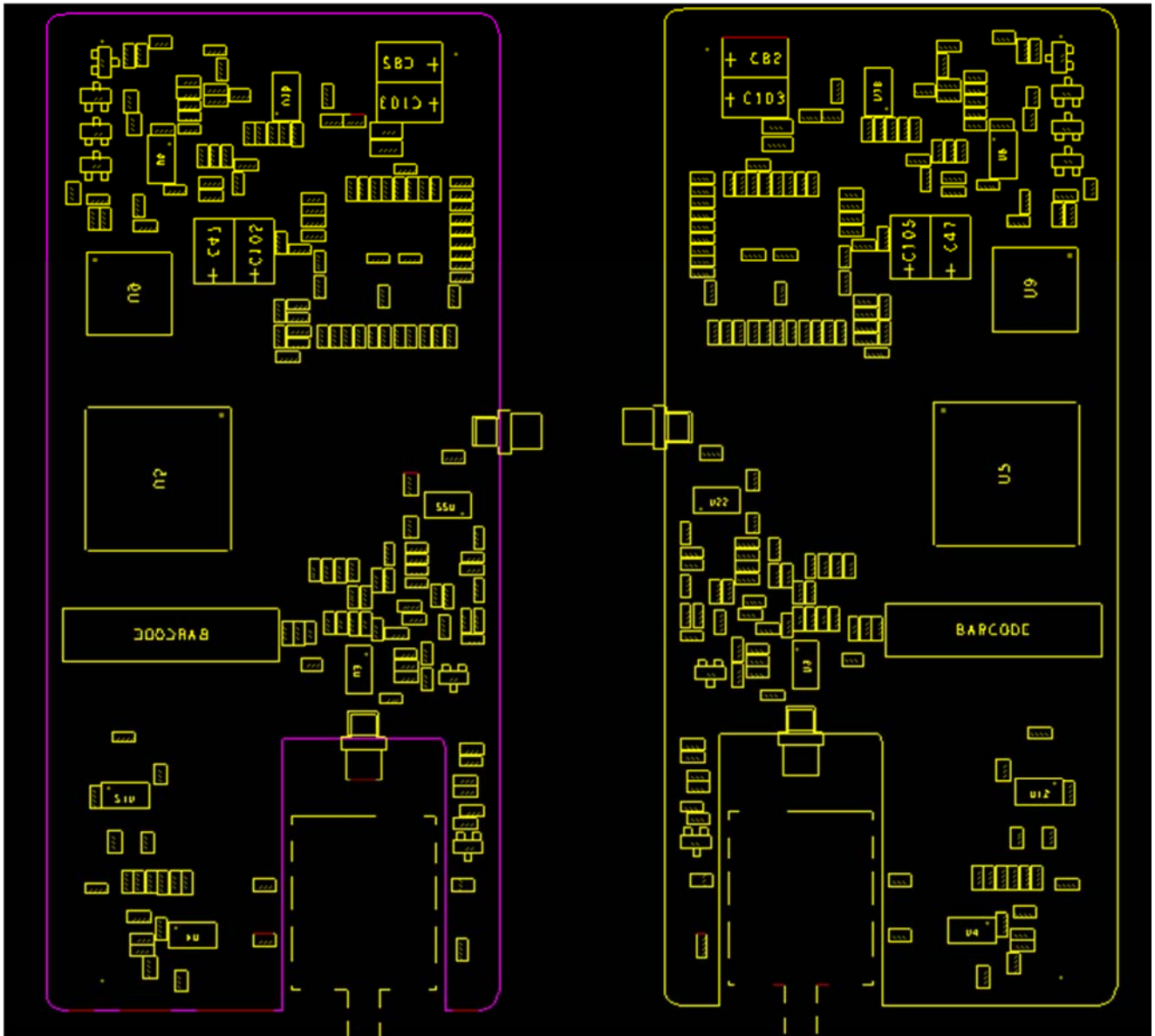




Scaling example

# Example

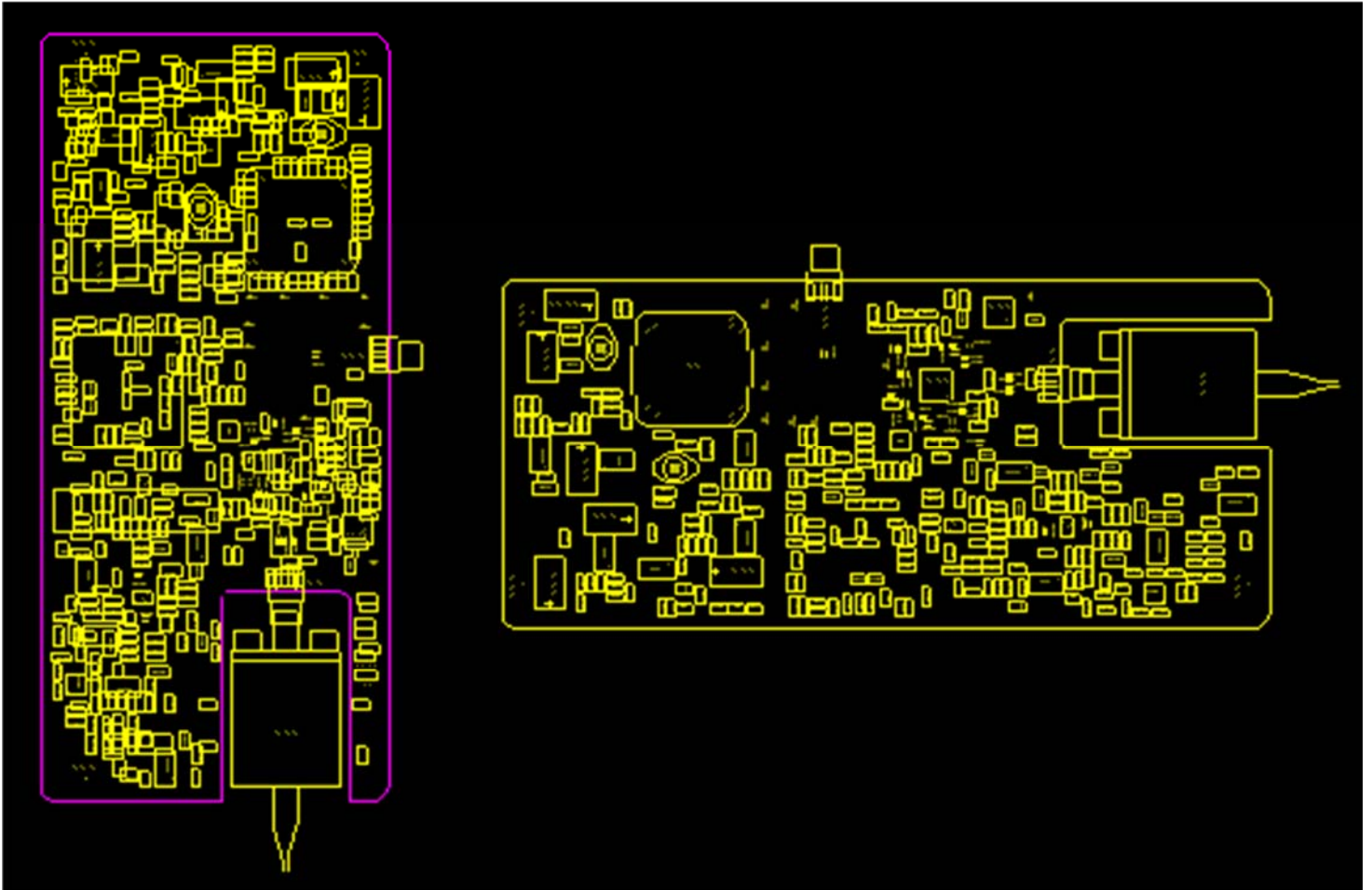
---



Mirror example

# Example

---



Rotate example

# Example



Auto scale by pick example

# Help

