

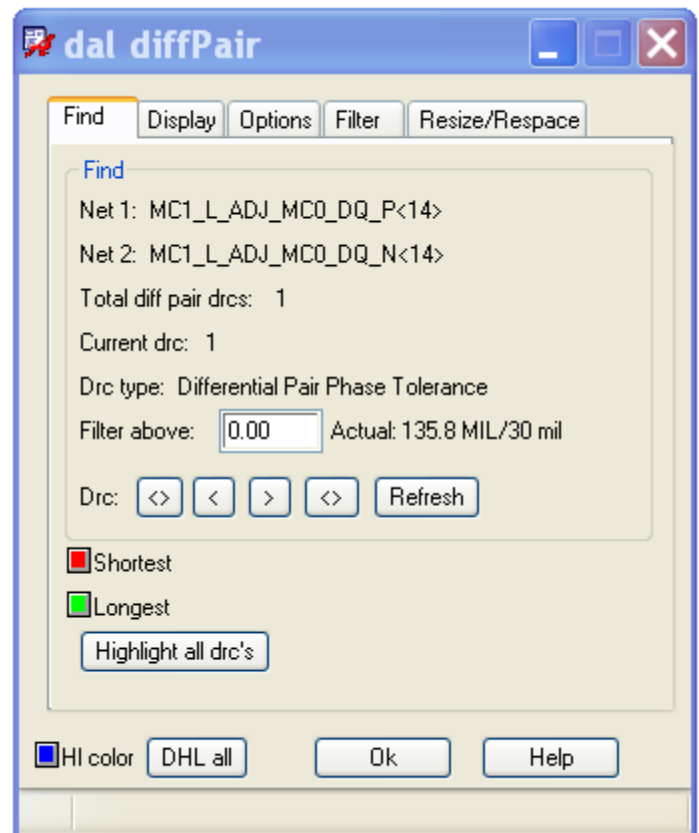


Diffpair

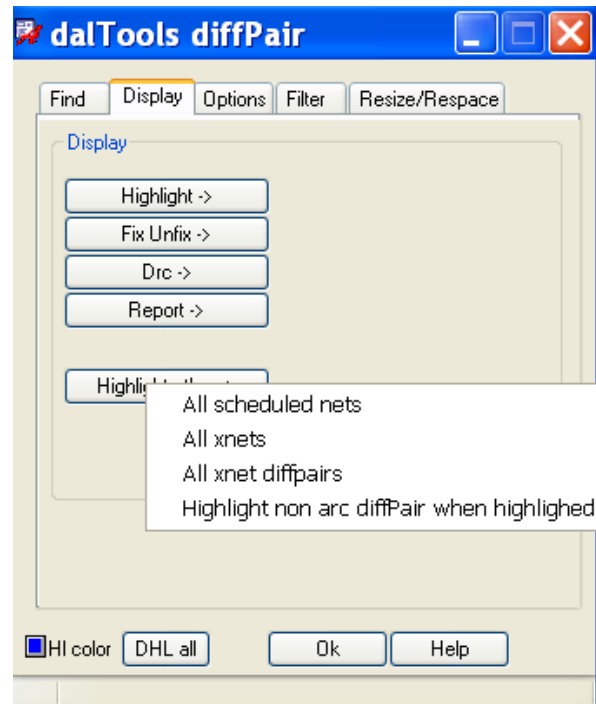
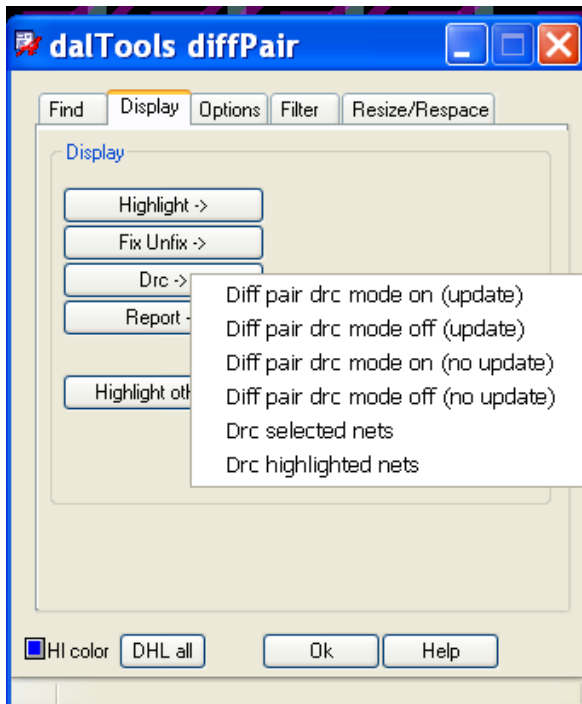
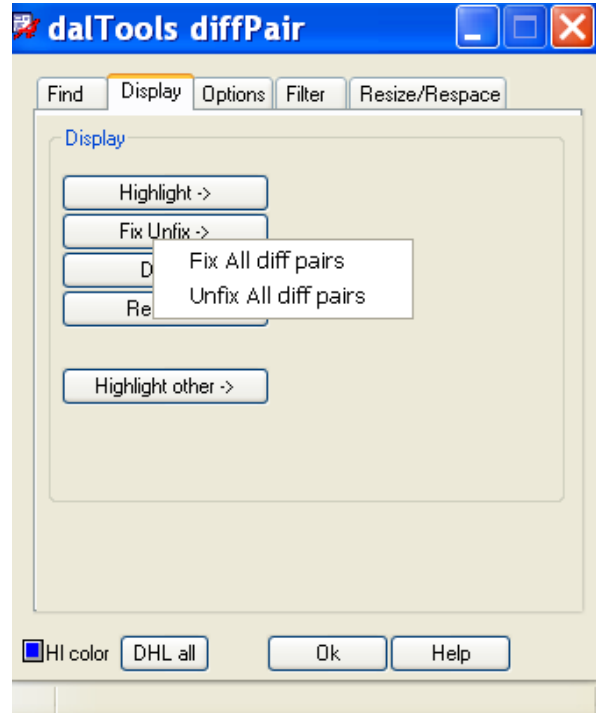
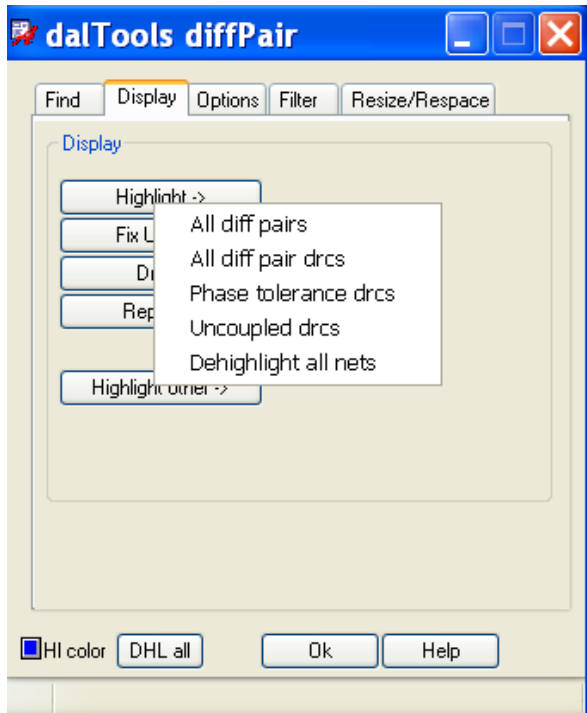
Comprehensive differential pair tool.

Features:

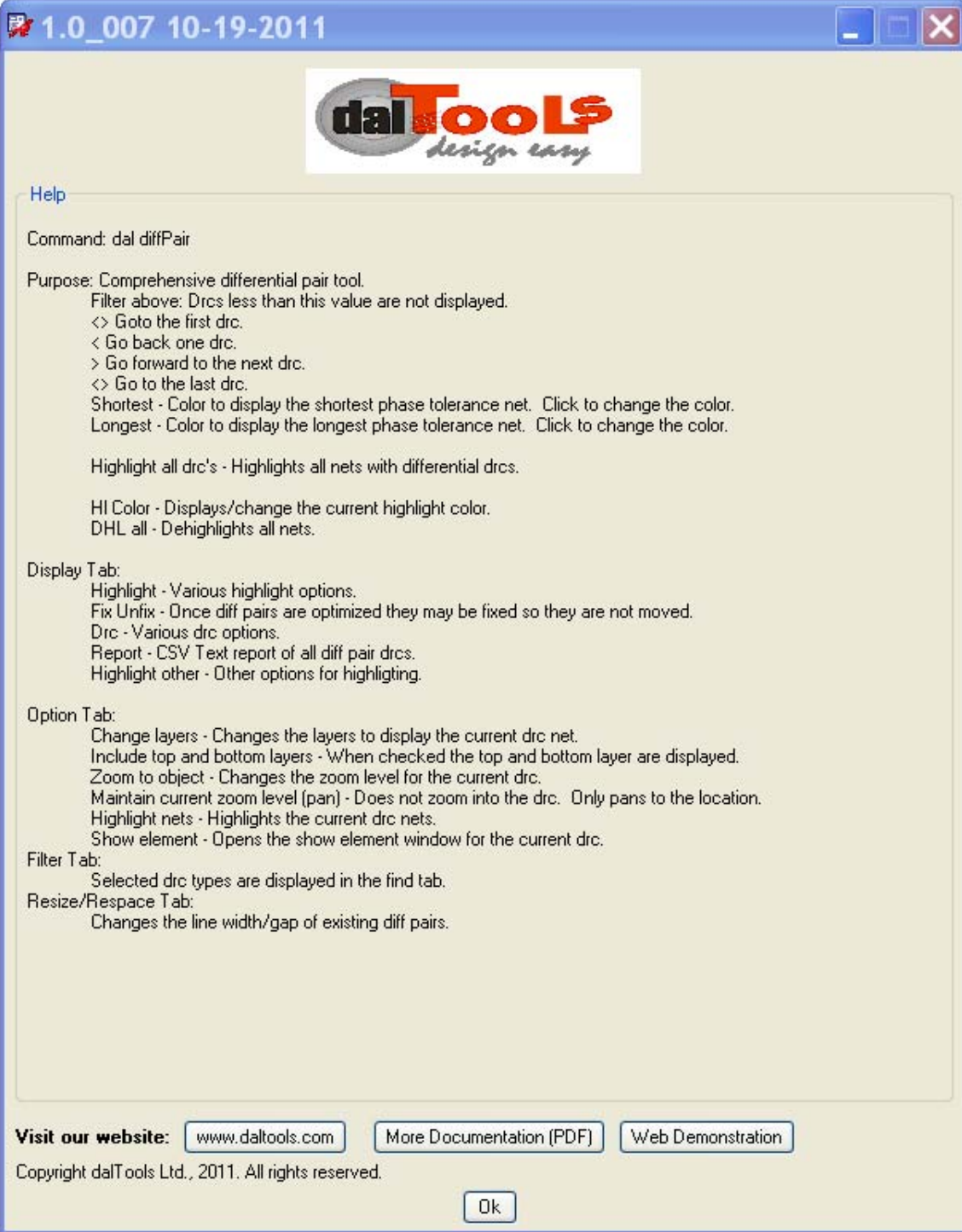
- Helps clear differential pair drcs >30% faster.
- Filters drcs by type.
- Automatic zoom/layer change to problem areas.
- Advance search/highlight features.
- Supports xnets.
- Highlighting of non arc segments on critical high speed nets.




Extended Features



Help



1.0_007 10-19-2011



Help

Command: dal diffPair

Purpose: Comprehensive differential pair tool.

- Filter above: Drcs less than this value are not displayed.
- <> Goto the first drc.
- < Go back one drc.
- > Go forward to the next drc.
- <> Go to the last drc.
- Shortest - Color to display the shortest phase tolerance net. Click to change the color.
- Longest - Color to display the longest phase tolerance net. Click to change the color.

Highlight all drc's - Highlights all nets with differential drcs.

HI Color - Displays/change the current highlight color.

DHL all - Dehighlights all nets.

Display Tab:

- Highlight - Various highlight options.
- Fix Unfix - Once diff pairs are optimized they may be fixed so they are not moved.
- Drc - Various drc options.
- Report - CSV Text report of all diff pair drcs.
- Highlight other - Other options for highlighting.

Option Tab:

- Change layers - Changes the layers to display the current drc net.
- Include top and bottom layers - When checked the top and bottom layer are displayed.
- Zoom to object - Changes the zoom level for the current drc.
- Maintain current zoom level (pan) - Does not zoom into the drc. Only pans to the location.
- Highlight nets - Highlights the current drc nets.
- Show element - Opens the show element window for the current drc.

Filter Tab:

- Selected drc types are displayed in the find tab.

Resize/Respace Tab:

- Changes the line width/gap of existing diff pairs.

Visit our website: www.daltools.com [More Documentation \(PDF\)](#) [Web Demonstration](#)

Copyright dalTools Ltd., 2011. All rights reserved.

Ok