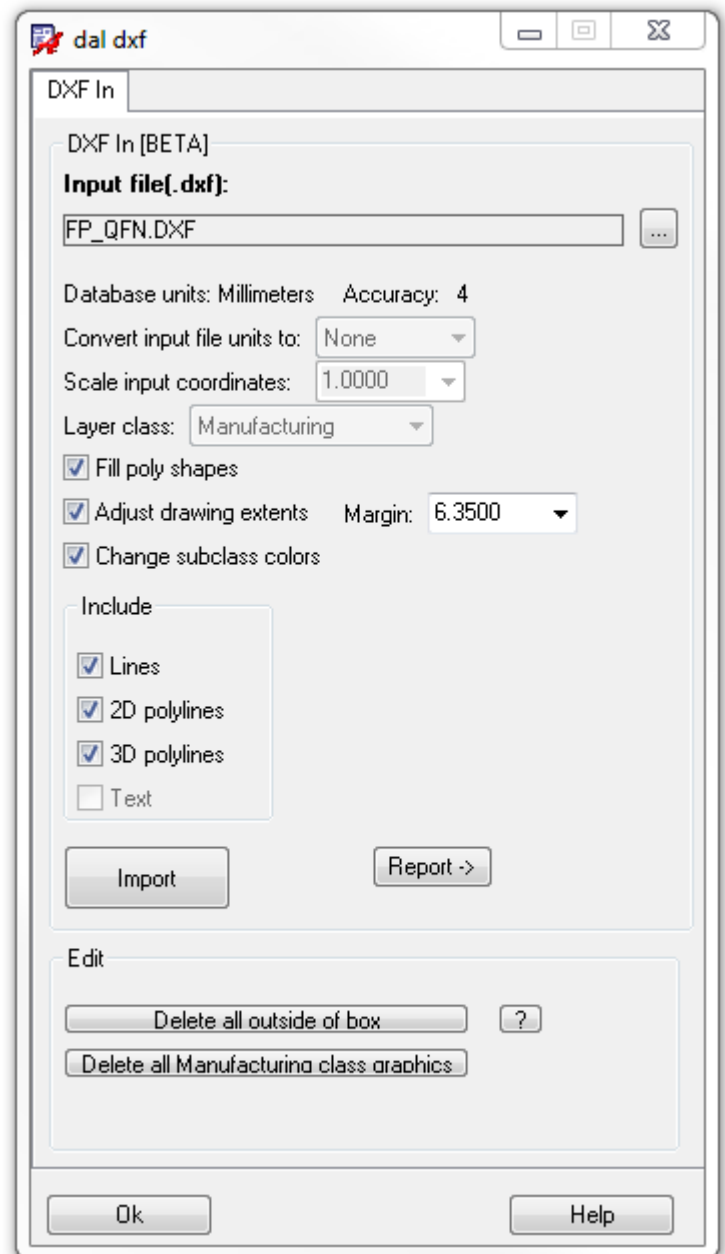


DXF [BETA]

Converts an Autocad DXF input file into an intelligent Allegro database. Often this command will successfully convert a .dxf file that the standard File->Import DXF (dfx2a) will not.

Features:

- Converts input unit option.
- Scale input graphics option.
- Filled or unfilled poly outlines option.
- Entity filters.
- Detailed report files.

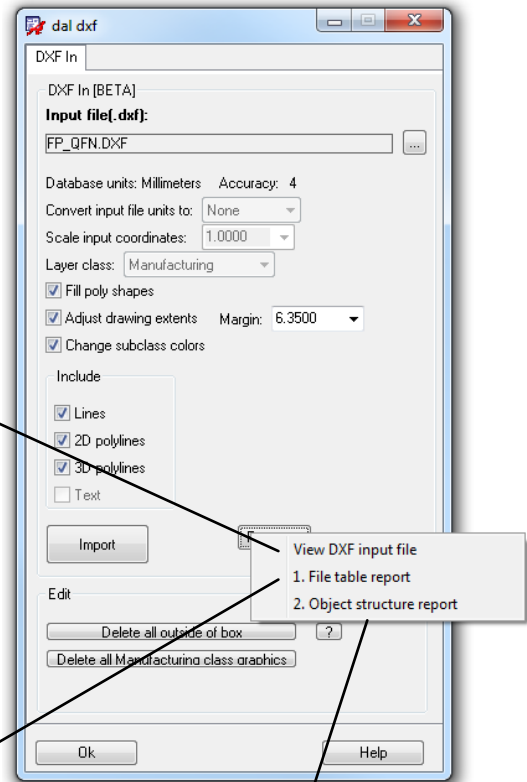


Reports

```

1 0
2 SECTION
3 2
4 HEADER
5 9
6 $ACADVER
7 1
8 AC1009
9 9
10 $EXTMIN
11 10
12 -0.005
13 20
14 -0.005
15 30
16 0
17 9
18 $EXTMAX
19 10
20 10.355
21 20
22 7.505
23 30
24 0
25 9
26 $EXTMIN

```



```

1 dalTools - Note: This file displays the .dxf file parsed as a data table.
2 1 (lineNur 1 codeNur "0" codeName nil codeVal "SECTION")
3 2 (lineNur 3 codeNur "2" codeName nil codeVal "HEADER")
4 3 (lineNur 5 codeNur "9" codeName nil codeVal "$ACADVER")
5 4 (lineNur 7 codeNur "1" codeName nil codeVal "AC1009")
6 5 (lineNur 9 codeNur "9" codeName nil codeVal "$EXTMIN")
7 6 (lineNur 11 codeNur "10" codeName "X Start point" codeVal "-0.005")
8 7 (lineNur 13 codeNur "20" codeName "Y Start point" codeVal "-0.005")
9 8 (lineNur 15 codeNur "30" codeName nil codeVal "0")
10 9 (lineNur 17 codeNur "9" codeName nil codeVal "$EXTMAX")
11 10 (lineNur 19 codeNur "10" codeName "X Start point" codeVal "10.355")
12 11 (lineNur 21 codeNur "20" codeName "Y Start point" codeVal "7.505")
13 12 (lineNur 23 codeNur "30" codeName nil codeVal "0")
14 13 (lineNur 25 codeNur "9" codeName nil codeVal "$LIMMIN")
15 14 (lineNur 27 codeNur "10" codeName "X Start point" codeVal "0")
16 15 (lineNur 29 codeNur "20" codeName "Y Start point" codeVal "0")
17 16 (lineNur 31 codeNur "9" codeName nil codeVal "$EXTMIN")

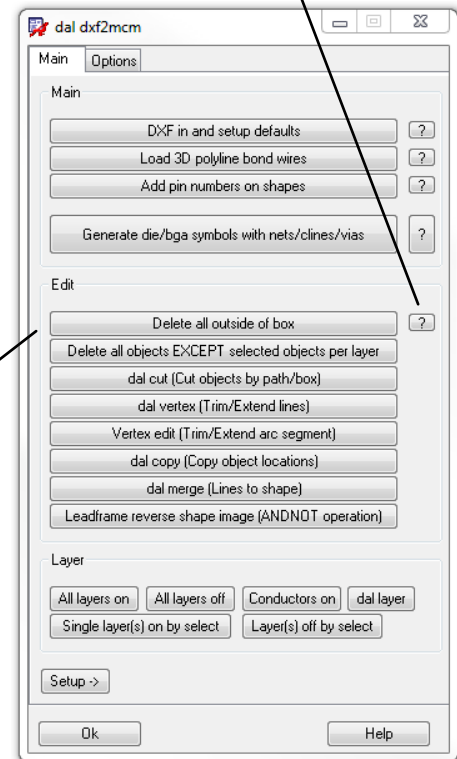
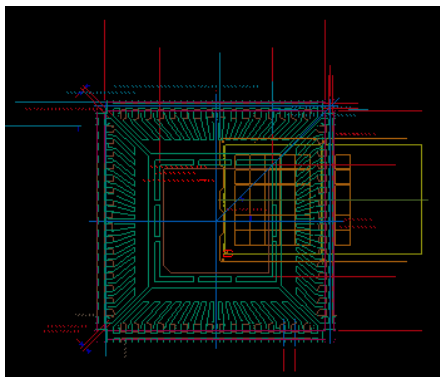
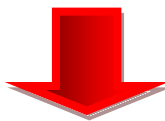
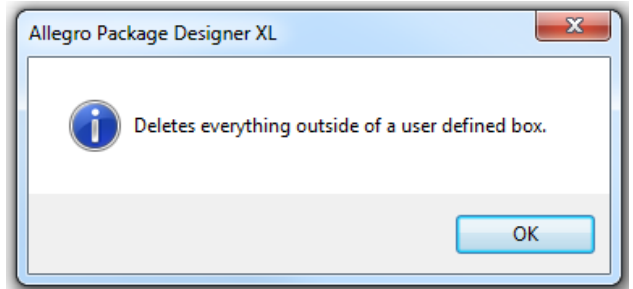
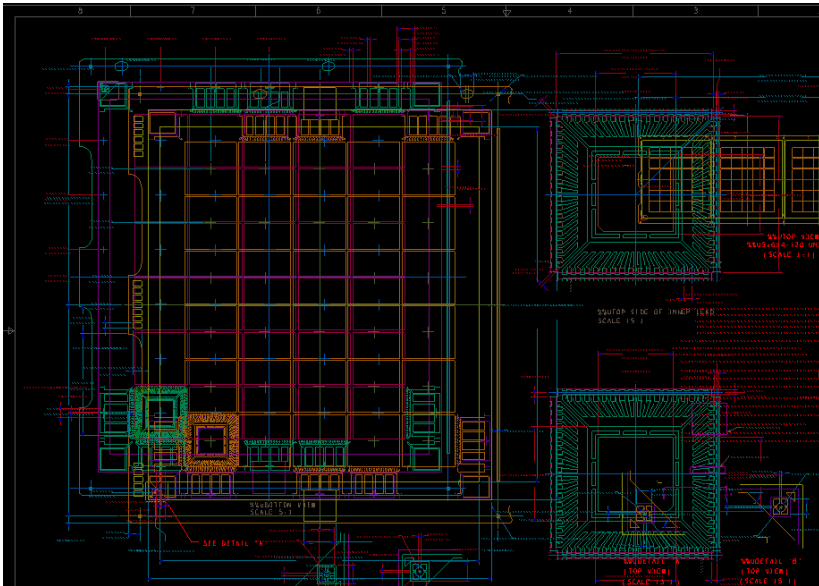
```

```

1 DXF file units: Unknown.
2 DXF file extents: ((-0.005 -0.005) (10.355 7.505))
3 Database extents: ((-6.355 -6.355) (16.705 13.855)) Margin: 6.35
4
5 lineBeg,lineEnd,type,layer,width,isPoly,isSameWidth
6 1269,1337,"POLYLINE","BORDER",0.0,t,t
7 xy,width,angle,isClockwise,bulge
8 (0.0 7.5),nil,nil,nil,nil
9 (10.35 7.5),nil,nil,nil,nil
10 (10.35 0.0),nil,nil,nil,nil
11 (0.0 0.0),nil,nil,nil,nil
12
13 lineBeg,lineEnd,type,layer,width,isPoly,isSameWidth
14 1341,1383,"POLYLINE","BORDER",0.0,nil,t
15 xy,width,angle,isClockwise,bulge
16 (7.5 0.0),nil,nil,nil,nil
17 (7.5 7.5),nil,nil,nil,nil
18
19 lineBeg,lineEnd,type,layer,width,isPoly,isSameWidth
20 1387,1429,"POLYLINE","BORDER",0.0,nil,t
21 xy,width,angle,isClockwise,bulge
22 (7.5 1.375),nil,nil,nil,nil
23 (10.35 1.375),nil,nil,nil,nil
24

```

Delete all outside of box



Help

