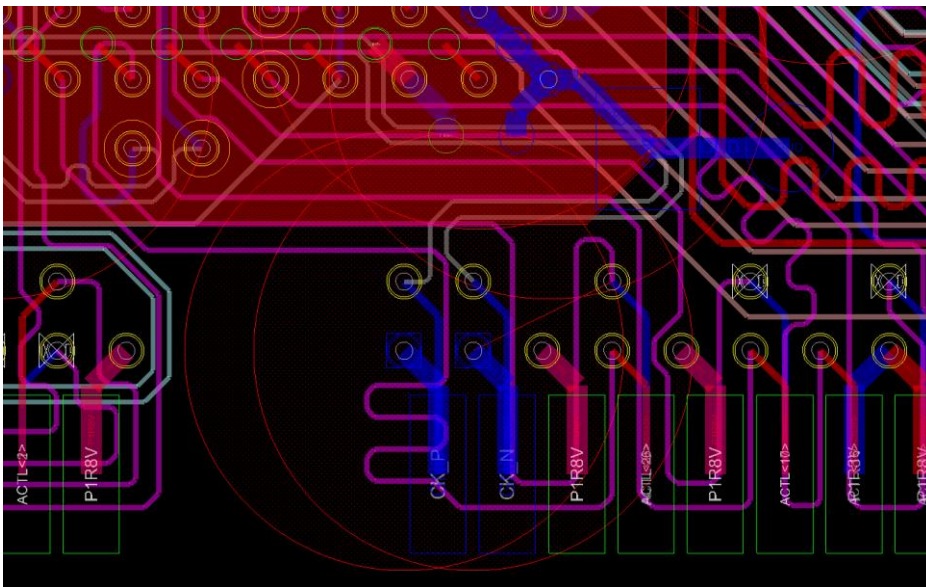


GndReturn

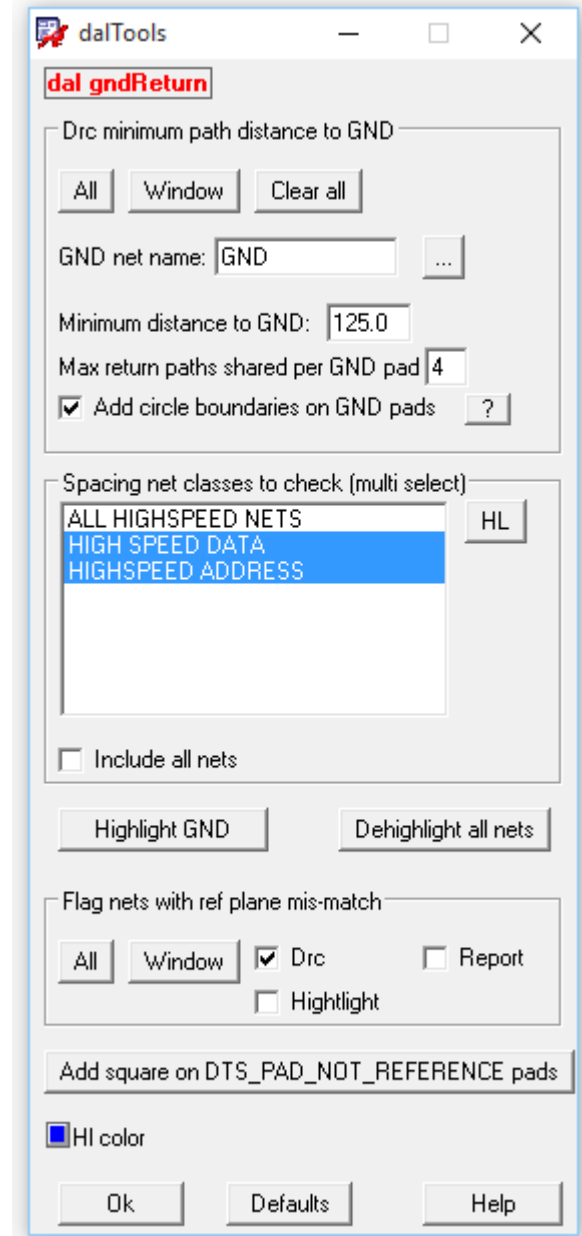
Identifies high speed signals that do not have a nearby GND return path when transitioning between different GND planes through the stackup.

Features:

- ❑ Creates DRCs and draws graphics where high speed nets violate the minimum GND return path.
- ❑ Reads the stackup and determines which high speed nets actually transition between non adjacent reference planes.
- ❑ Makes it easy to find and correct issues related to GND vias being too far away from the high speed vias.




The blue vias are gnd. Notice the drc is created because the gnd via return path is located too far away from the high speed net that transitions to different gnd planes through the stackup.



Help

dal gndreturn Version 1.0_006 11-02-2015



Help

Command: dal gndreturn

Purpose: Identifies high speed signals that do not have a nearby GND return path when transitioning between different GND planes through the stackup.

Drc minimum path distance to GND

- All - Checks all the nets in the selected net classes or all nets if include all nets is checked.
- Window - Checks the nets in the user selected window.
- Clear all - Clears all related external drcs and temporary graphics.

GND net name: - Normally GND or VSS. This is the net that will be used to measure from the gnd plane pad to the high speed pad transitions that cross reference planes.

Minimum distance to GND: - This is the minimum distance a high speed pad that transitions different gnd planes may be from the nearest gnd pad.

Max return paths shared per GND pad - If more than this amount of transition pads per gnd pad are shared then a drc is created.

Add circle boundaries on GND paths - When enabled this will add a reference circle so you can see the area around each GND pad that may be used as a high speed return path.

Spacing net classes to check - This is a list of spacing net classes from the constraint manager. You will need to setup high speed net classes in order to control which nets are checked.

Include all nets - When enabled all nets are checked including the nets in all spacing classes.

Highlight GND - Highlights the GND net.

Dehighlight all nets - Dehighlights all nets.

Next

Visit our website: www.daltools.com More Documentation (PDF) Web Demonstration

Copyright dalTools LLC., 2015. All rights reserved.

Ok

Help (cont)

