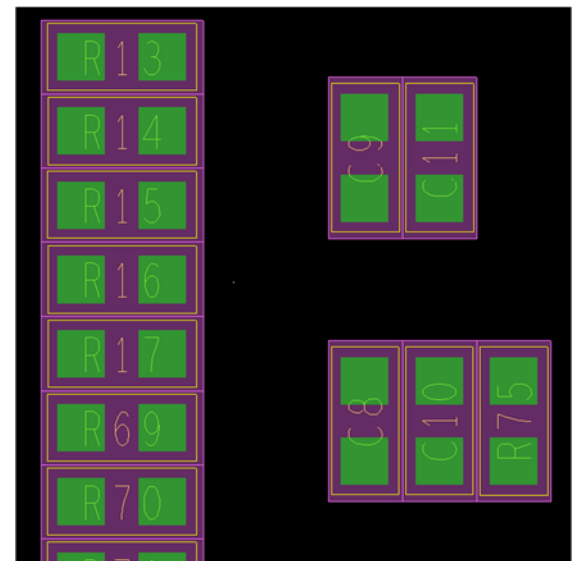
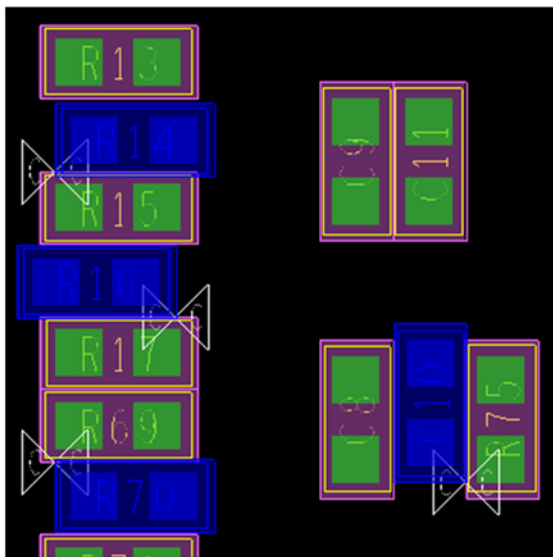
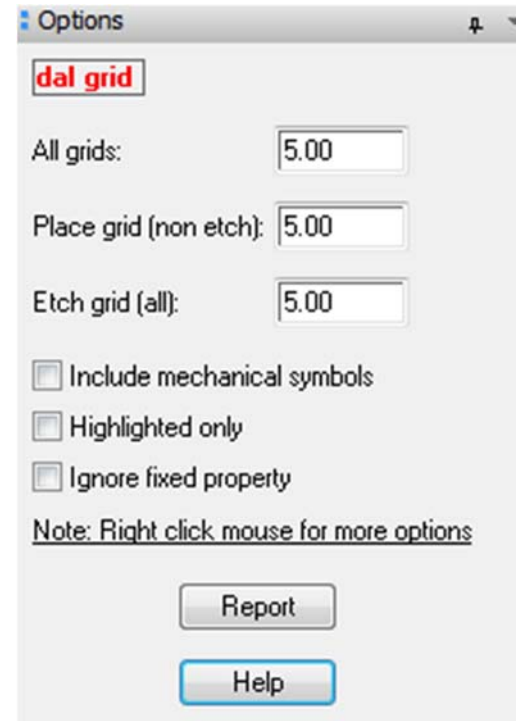
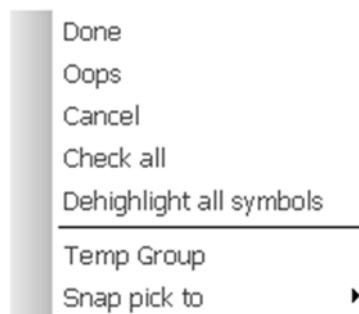


## Grid

Highlights off grid symbols with an option to move on grid.

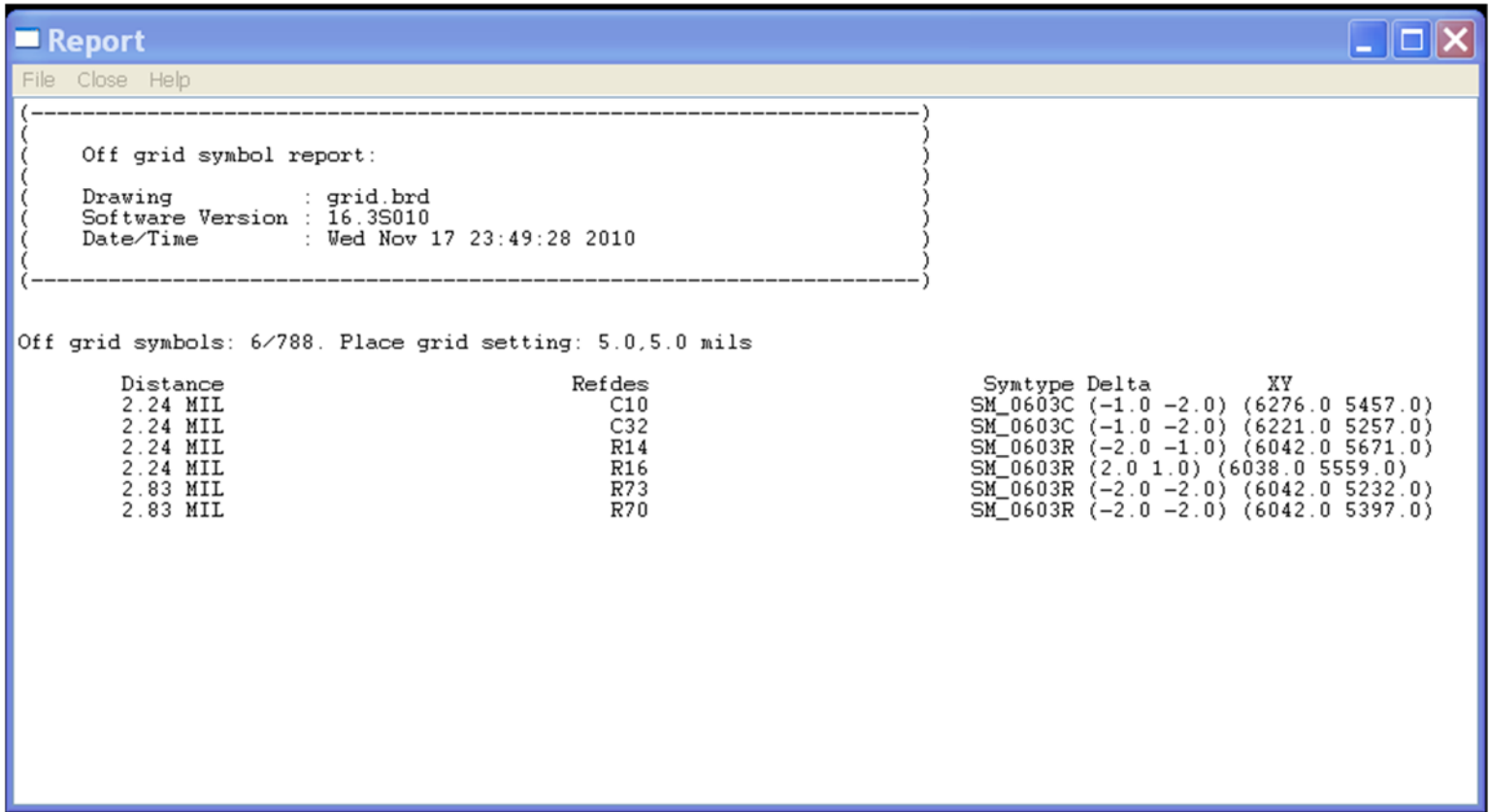
Features:

- Highlights off grid parts.
- Option to move on grid.
- Quick grid change aliases.



# Report

---



The screenshot shows a window titled "Report" with a menu bar containing "File", "Close", and "Help". The main content area displays an "Off grid symbol report" enclosed in a dashed box. Below this, it states "Off grid symbols: 6/788. Place grid setting: 5.0,5.0 mils". A table follows, listing symbols with their distances, reference designations, syntypes, deltas, and XY coordinates.


```
(-----)
( Off grid symbol report: )
( )
( Drawing      : grid.brd )
( Software Version : 16.35010 )
( Date/Time     : Wed Nov 17 23:49:28 2010 )
(-----)

Off grid symbols: 6/788. Place grid setting: 5.0,5.0 mils

Distance      Refdes      Syntype Delta      XY
2.24 MIL      C10         SM_0603C (-1.0 -2.0) (6276.0 5457.0)
2.24 MIL      C32         SM_0603C (-1.0 -2.0) (6221.0 5257.0)
2.24 MIL      R14         SM_0603R (-2.0 -1.0) (6042.0 5671.0)
2.24 MIL      R16         SM_0603R (2.0 1.0) (6038.0 5559.0)
2.83 MIL      R73         SM_0603R (-2.0 -2.0) (6042.0 5232.0)
2.83 MIL      R70         SM_0603R (-2.0 -2.0) (6042.0 5397.0)
```

# Help

dal Grid Version 1.0\_001 11-16-2010



## Help

Command: dal grid

Purpose: Highlights off grid symbols with an option to move them on grid.

Notice: Use caution with already connected symbols! May cause drcs and disconnects.

Procedure: Select the symbols to check and/or move onto the current grid setting by single selection or group selection. The user is presented with a yes or no question whether to move the parts on grid. Selecting yes moves the symbols onto a grid and selecting no highlights all off grid parts.  
Ops, Cancel and Done function like all other interactive commands.

Option tab:

- All grids: Displays and changes the grid x and y settings for place and all etch layers.
- Place grid (non etch): Displays and changes the grid x and y settings for place and non etch layers.
- Etch grid (all): Displays and changes the grid x and y settings for all the etch layers.

\*Note: Different units are supported. For example 2 mm <return> changes to a 2 millimeter grid in a mils database.

- Include mechanical symbols: Option to include or exclude mechanical symbols such as holes etc.
- Highlighted only: Option to find/change highlighted symbols only.
- Ignore fixed: Option to override and move fixed symbols.
- Report: Displays a report of all off grid symbols.

Right mouse button click options:

- Check all: Selects all symbols.
- Dehighlight all symbols: Dehighlights all symbols.

Command line option examples:

- Typing "dal grid 5" in the command window changes the grid to 5 database units.
- Typing "dal grid 2 mm" in a mils database changes the grid to 78.74 mils.

Hint: Use aliases to quickly change grid settings:

- Example 1 (Changes to 1 mil grid in mils database): alias g1 dal grid 1
- Example 2 (Changes to 5 mil grid in mils database): alias g5 dal grid 5
- Example 3 (Changes to 1 mm grid in mils database): alias g1mm dal grid 1 mm

Visit our website: [www.daltools.com](http://www.daltools.com) [More Documentation \(PDF\)](#)

Copyright dalTools Ltd., 2010. All rights reserved.

Ok