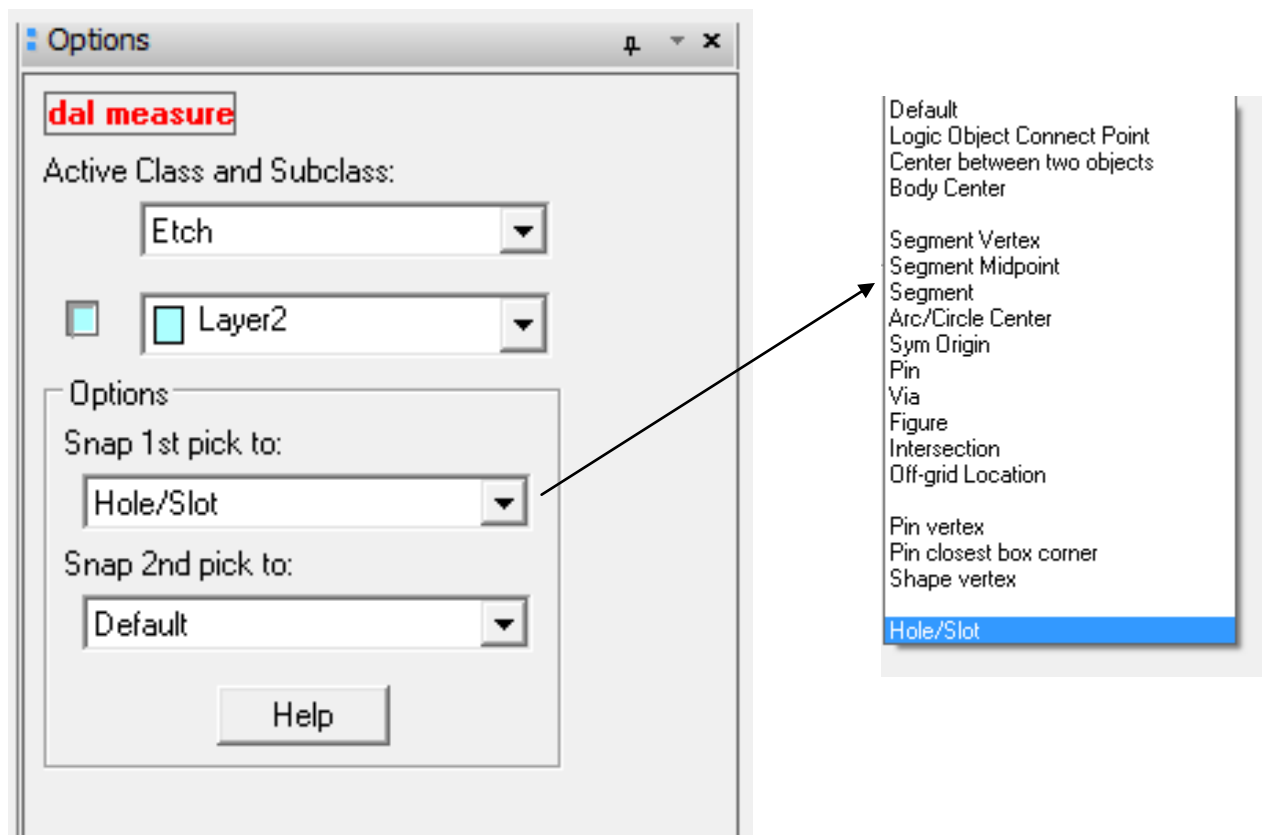


Measure

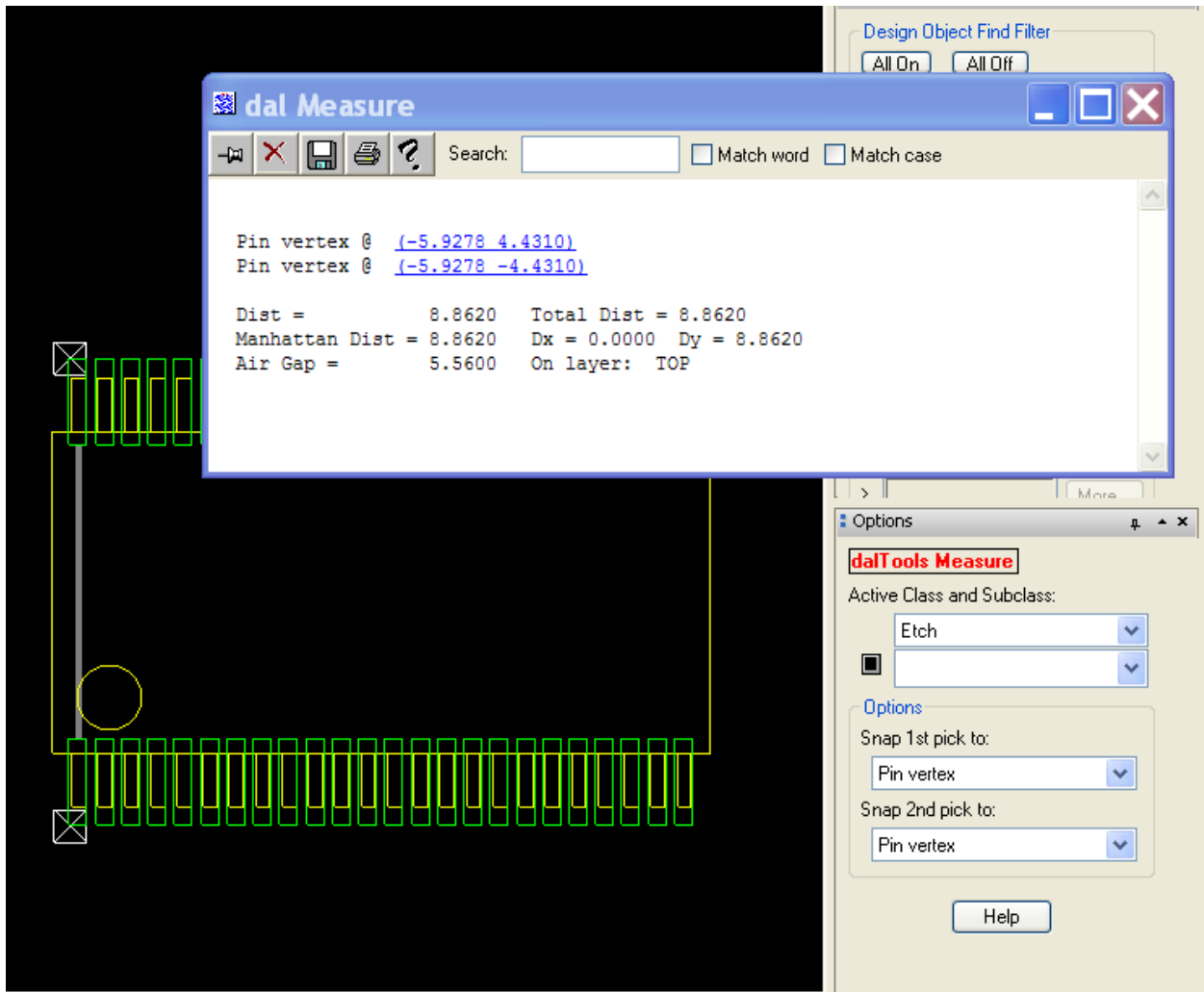
Enhanced show measure command with more object snapping options and dual units display.

Features:

- ❑ Supports Hole to Hole and Hole to other objects.
- ❑ Supports center between objects and finds intersections.
- ❑ Displays results in English and Metric units.



Measures the exact outside pin distance



Measured from the pin vertex upper left to the pin vertex lower left

Example 2

The screenshot displays the Adobe Acrobat Professional interface with a technical drawing of a component. The drawing includes several dimensions: 15.00, 6.00, 25.50, 28.43, 23.04, 24.52, 0.13, and 0.18. Two reference points are labeled: 'REF. SI RECEPT LAYOUT' and 'REF. SH GROUND f LAYOUT'. A 'dal Measure' dialog box is open, showing the following data:

```
Shape vertex @ (-12.3730 -11.5200)
Shape vertex @ (-12.3730 11.5200)
Dist = 23.0400 Total Dist = 23.0400
Manhattan Dist = 23.0400 Dx = 0.0000 Dy = 23.0400
No air gap, both picks are the same element.
```

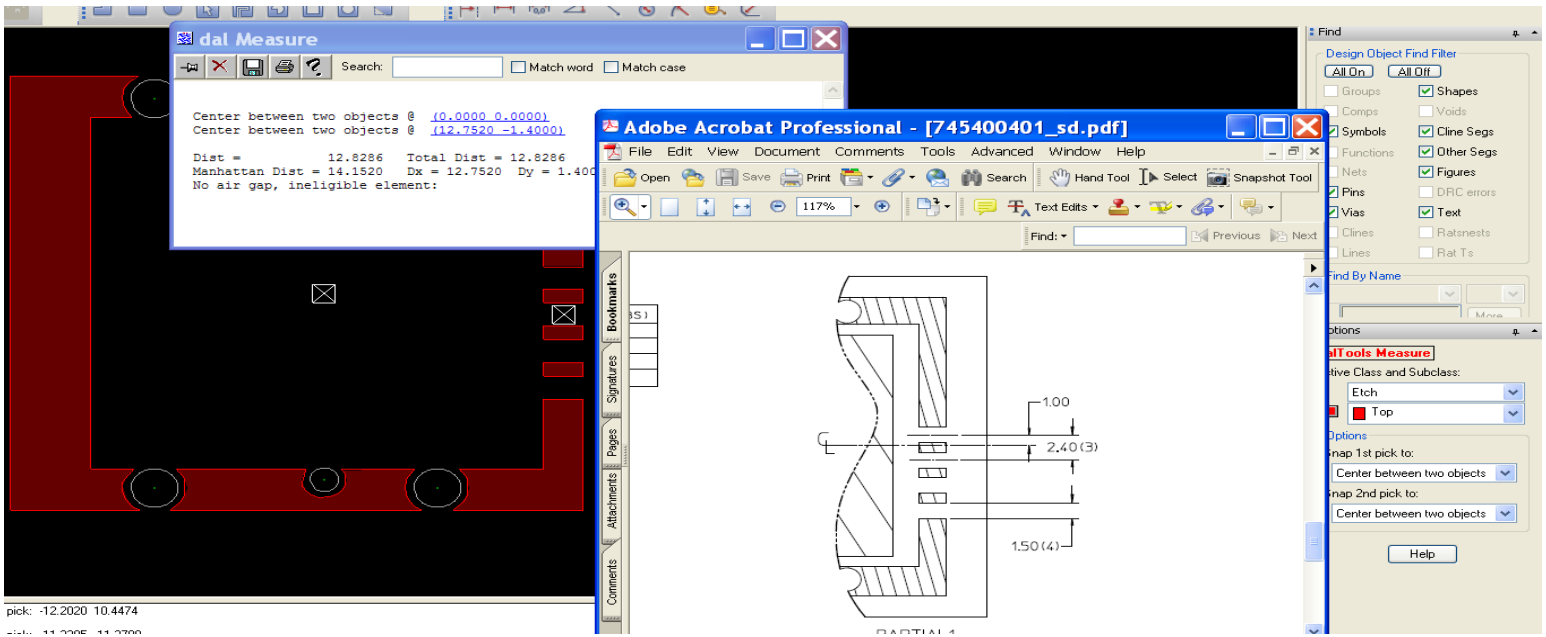
On the right side, the 'Design Object Find Filter' and 'Options' panels are visible. The 'Options' panel for 'dalTools Measure' shows 'Active Class and Subclass' set to 'Etch' and 'Top'. The 'Snap 1st pick to:' and 'Snap 2nd pick to:' are both set to 'Shape vertex'. A 'Help' button is located at the bottom of the options panel.

At the bottom left of the screenshot, the following text is present:

```
Command >
Command > x:b5
Command >
Make two nicks for the distance calculator
```

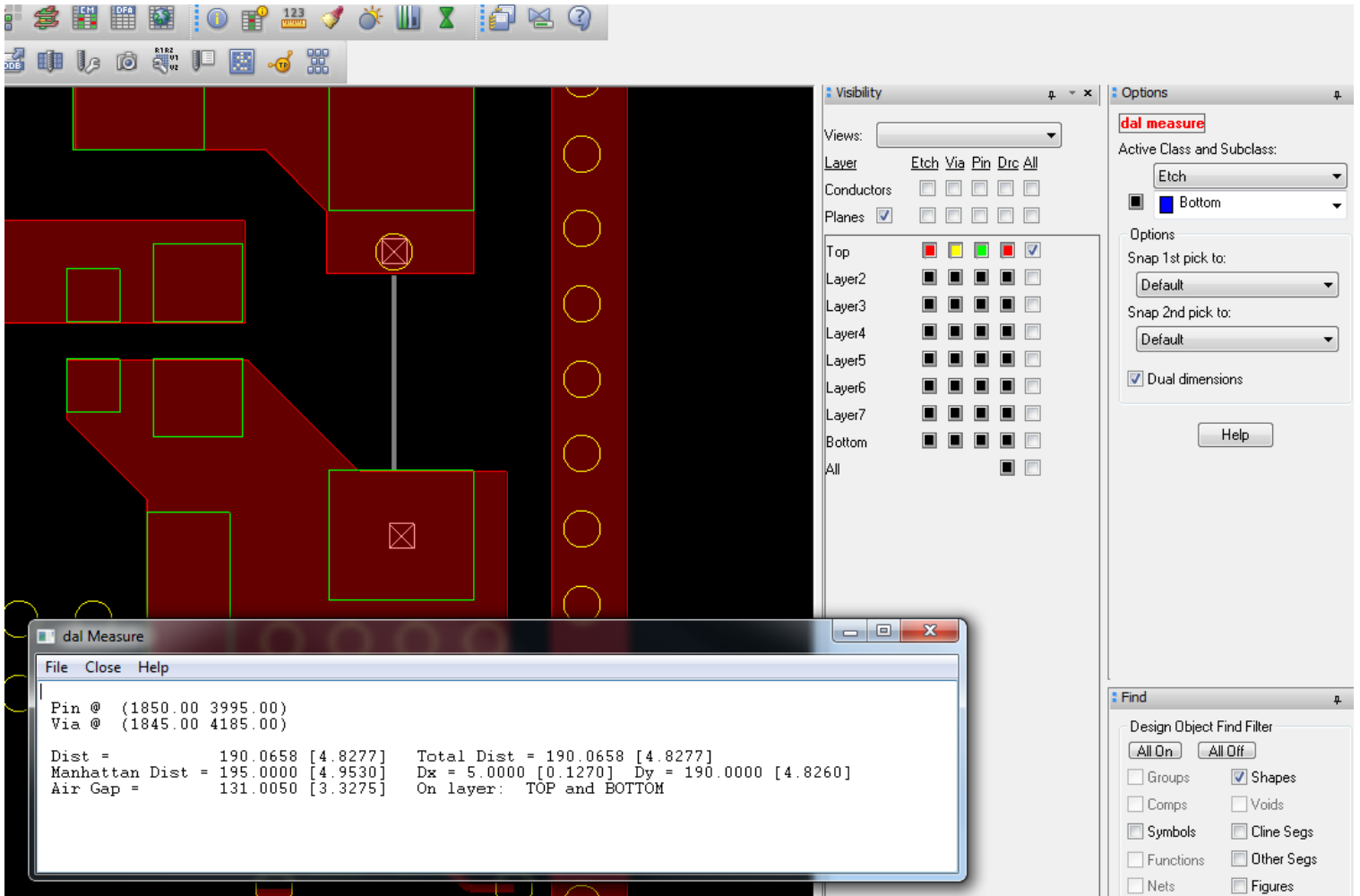
Snap to the upper left shape vertex and the lower left shape vertex

Example 3



Measure from center to center

Example 4



Dual English and Metric display

Drill hole measurements

The screenshot shows a PCB design software interface. The main window displays a circular drill hole with a yellow outline and a black center. An 'Options' dialog box is open on the right, and a 'dal Measure' dialog box is open in the foreground showing measurement data.

Options Dialog:

- dal measure
- Active Class and Subclass: Etch
- Layer2
- Options:
 - Snap 1st pick to: Hole/Slot
 - Snap 2nd pick to: Default
- Help

dal Measure Dialog:


Units: Mils [Millimeters]

Via hole @ (3535.00 -70.00)
Shape @ (3100.00 1075.00)

Dist =	1224.8469	[31.1111]	Total Dist =	1224.8469	[31.1111]			
Manhattan Dist =	1580.0000	[40.1320]	Dx =	435.0000	[11.0490]	Dy =	1145.0000	[29.0830]
Air Gap =	10.0200	[0.2545]	On layer:	DTS_MEASURE and LAYER2				

Help

1.0_002 09-22-2011



Help

Command: dal Measure

Purpose: Operates much like the standard measure command except it includes enhanced object snapping capabilities.

For example the Snap to "Logic Object Connect Point" is especially useful and powerful.

The "Center between two objects" is also very useful for finding the center of two objects.

The "Intersection" option will find the projected intersection of lines and arcs.

The "Pin vertex" and "Shape vertex" are useful features when building library parts.

Visit our website: www.daltools.com More Documentation (PDF) Web Demonstration

Copyright dalTools Ltd., 2011. All rights reserved.

Ok