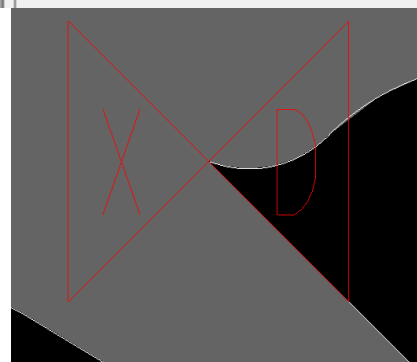
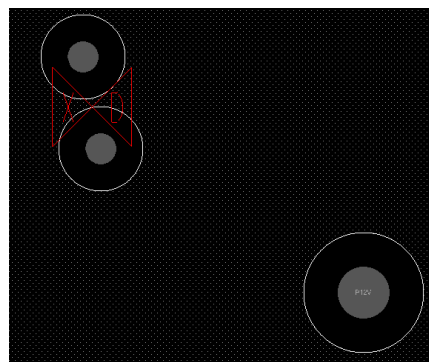
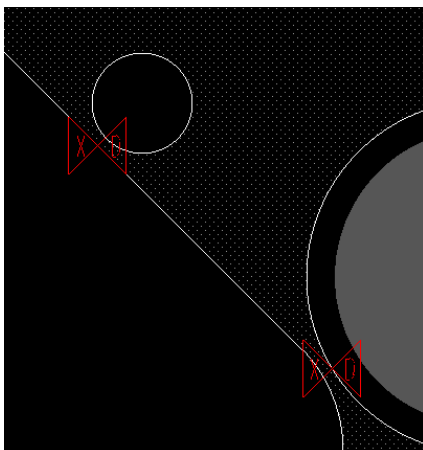
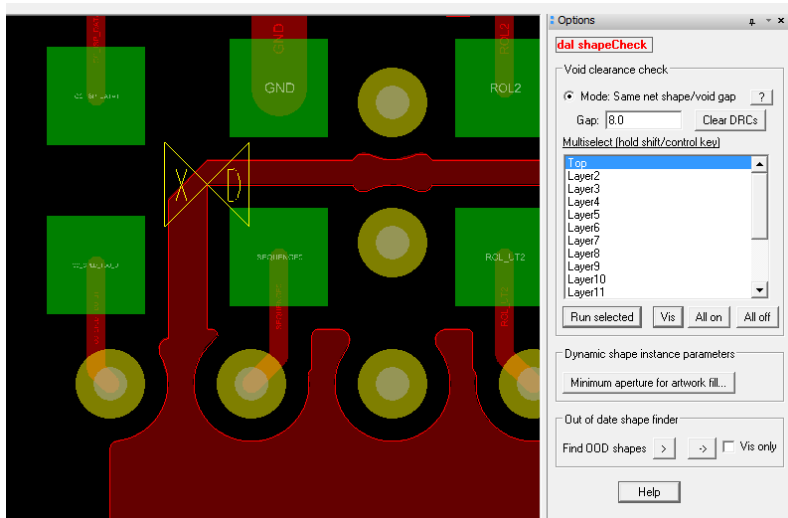
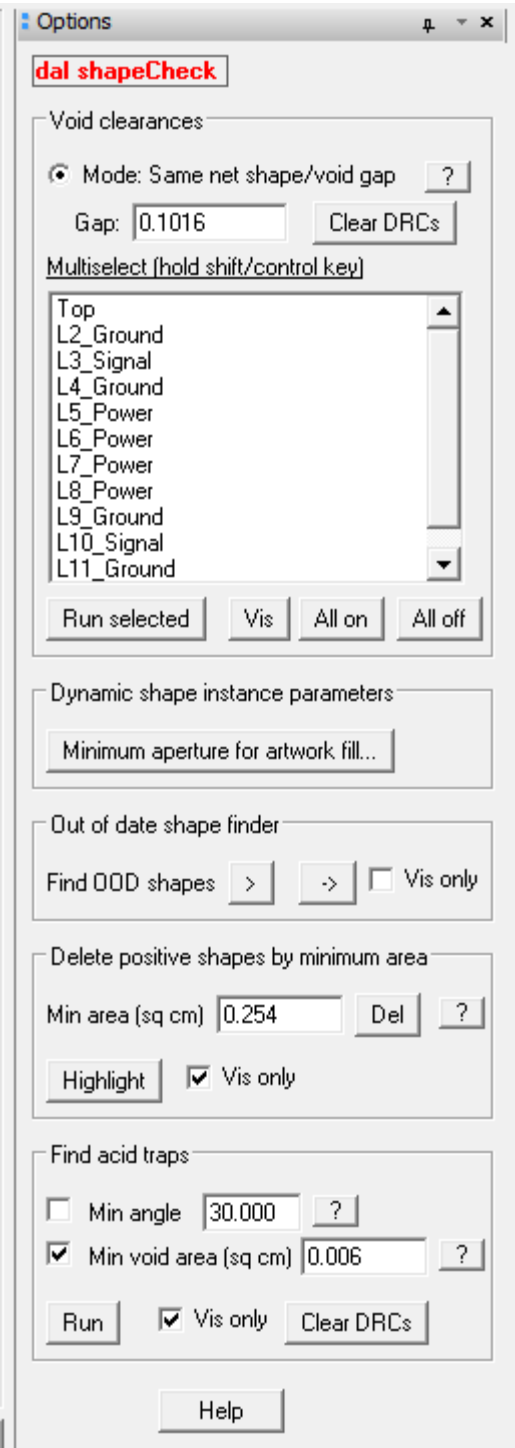


ShapeCheck

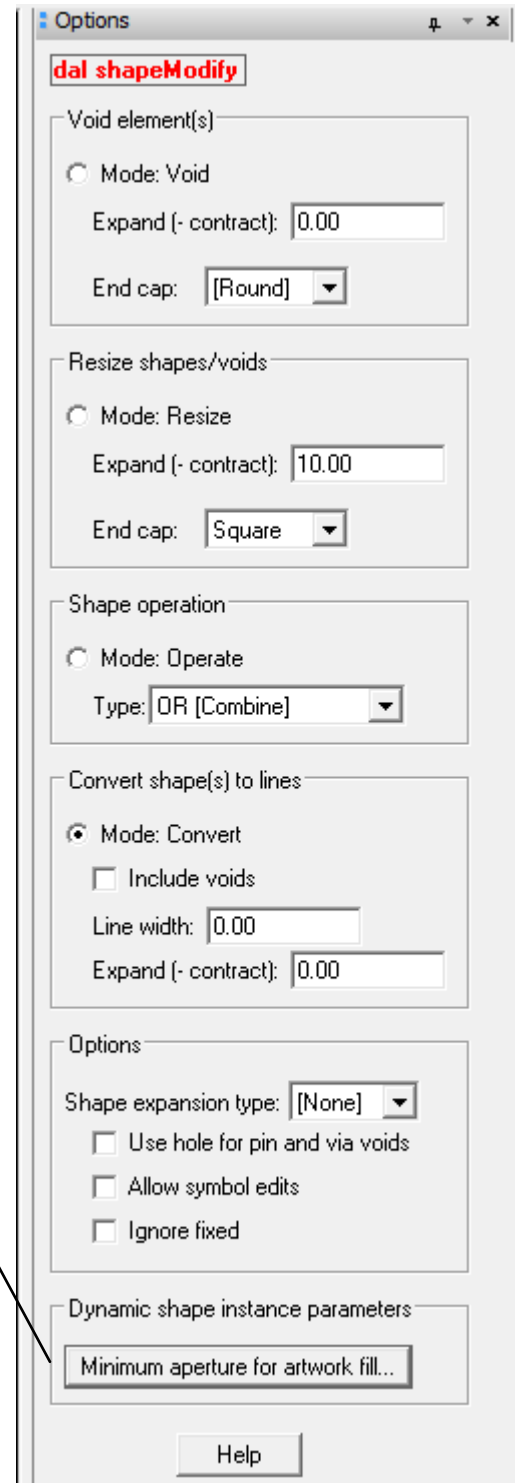
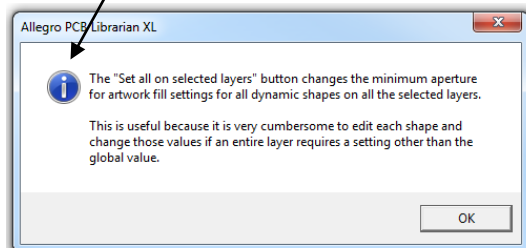
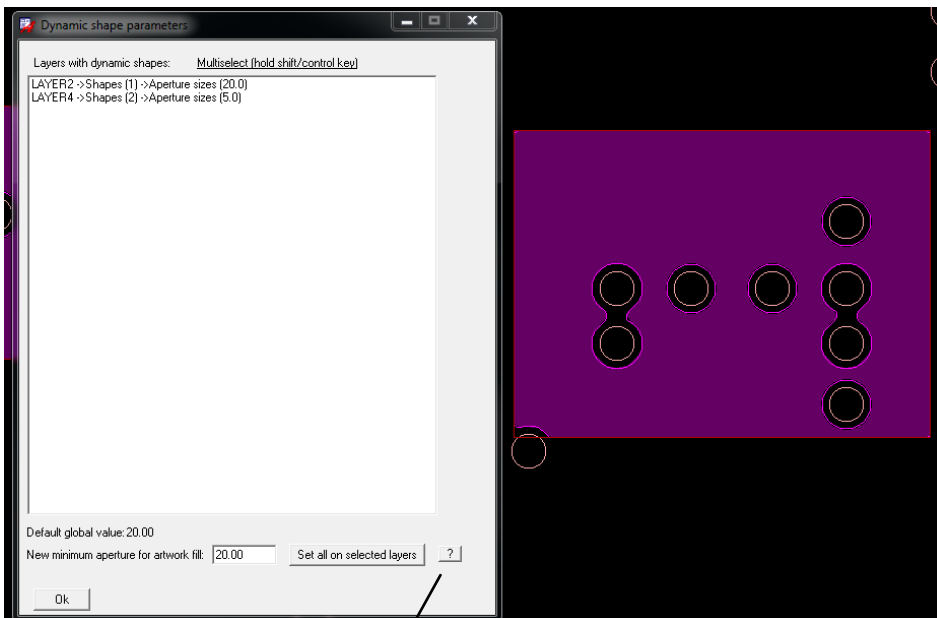
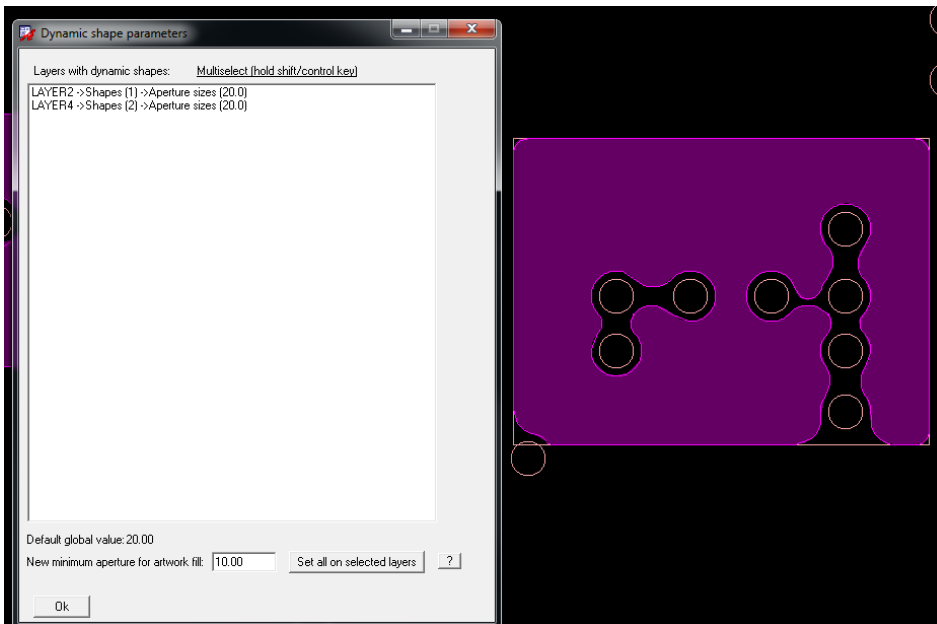
Multi feature shape check utility.

Features:

- Checks the minimum gap between voids in positive, negative, static and dynamic shapes.
- Quickly set minimum aperture artwork fill values on layers independently.
- Finds and updates out of date shapes.
- Finds acute angle etch acid traps.



Dynamic shape instance parameters



Min Void Area

Options

dal shapeCheck

Void clearances

Mode: Same net shape/void gap ?

Gap: 0.1016 Clear DRCs

Multiselect (hold shift/control key)

Top
L2_Ground
L3_Signal
L4_Ground
L5_Power
L6_Power
L7_Power
L8_Power
L9_Ground
L10_Signal
L11_Ground

Run selected Vis All on All off

Dynamic shape instance parameters

Minimum aperture for artwork fill...

Out of date shape finder

Find OOD shapes > -> Vis only

Delete positive shapes by minimum area

Min area (sq cm) 0.254 Del ?

Highlight Vis only

Find acid traps

Min angle 30.000 ?

Min void area (sq cm) 0.006 ?

Run Vis only Clear DRCs

Help

Show Element

File Close Help

LISTING: 1 element(s)

< DRC ERROR >

Class: DRC ERROR CLASS
Subclass: TOP
Origin xy: (157.3460 56.5270)
Constraint: Externally Determined Violation
Constraint Set: Min Void area
Constraint Type: EXTERNAL REFERENCE

Constraint value: 0.0036
Actual value: 0.0006

Properties attached to drc error
EXTERNAL_DRC_VALUE = 0.0036

Help

1.0_000 07-03-2015



Help

Command: dal shapeCheck

Purpose: Multi feature shape checking utility.

Void clearance check

Same net shape/void gap - Checks the minimum gap between voids in shapes. Works for positive and negative layers.

Gap: The minimum gap value for DRC. This field accepts any units. Ex 1 mm

Clear DRCs - Removes all associated external drcs.

Run selected - Checks the gaps on all selected layers. Note: You may select individual shapes at any time also.

Vis - Turns on the selected layers in the list.

All on - Selects all layers in the list.

All off - Deselects all layers in the list.

Dynamic shape instance parameters

Minimum aperture for artwork fill - Changes the minimum aperture values on an entire layer at one time.

Note: Specifies in user units that distance between two voids. The voids are merged and treated as a single void, if void edges are less than this value.

Find OOD shapes - Walks thru out of date shapes. The -> button reports and highlights OOD shapes.

The Vis only button when checked will only report OOD shapes on currently visible layers.

Visit our website: www.daltools.com [More Documentation \(PDF\)](#) [Web Demonstration](#)

Copyright dalTools LLC., 2015. All rights reserved.

Ok