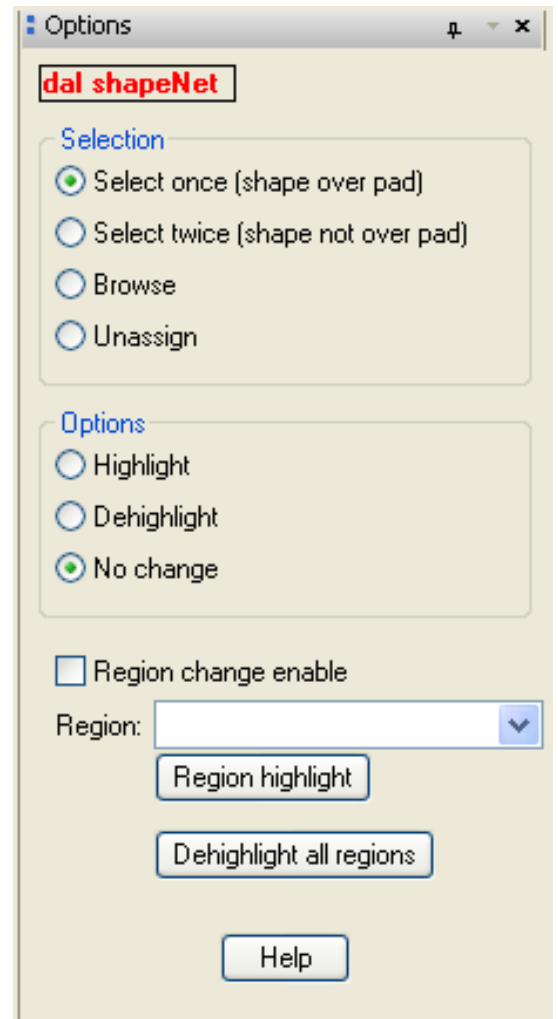


ShapeNet

Quickly and easily change shape net names.

Features:

- Fast assignment of split planes to appropriate nets by selection.
- Extended region shape support.



Example

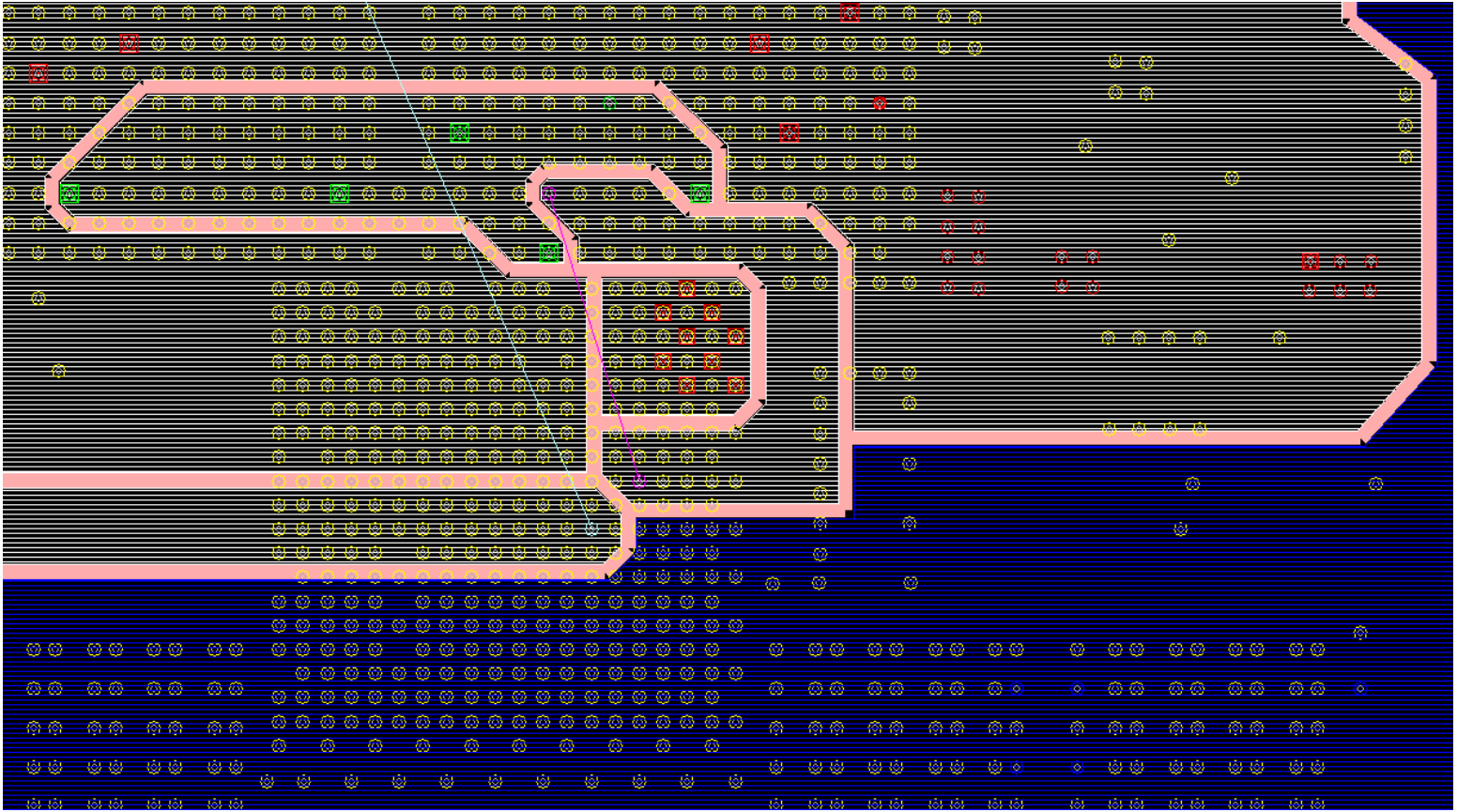
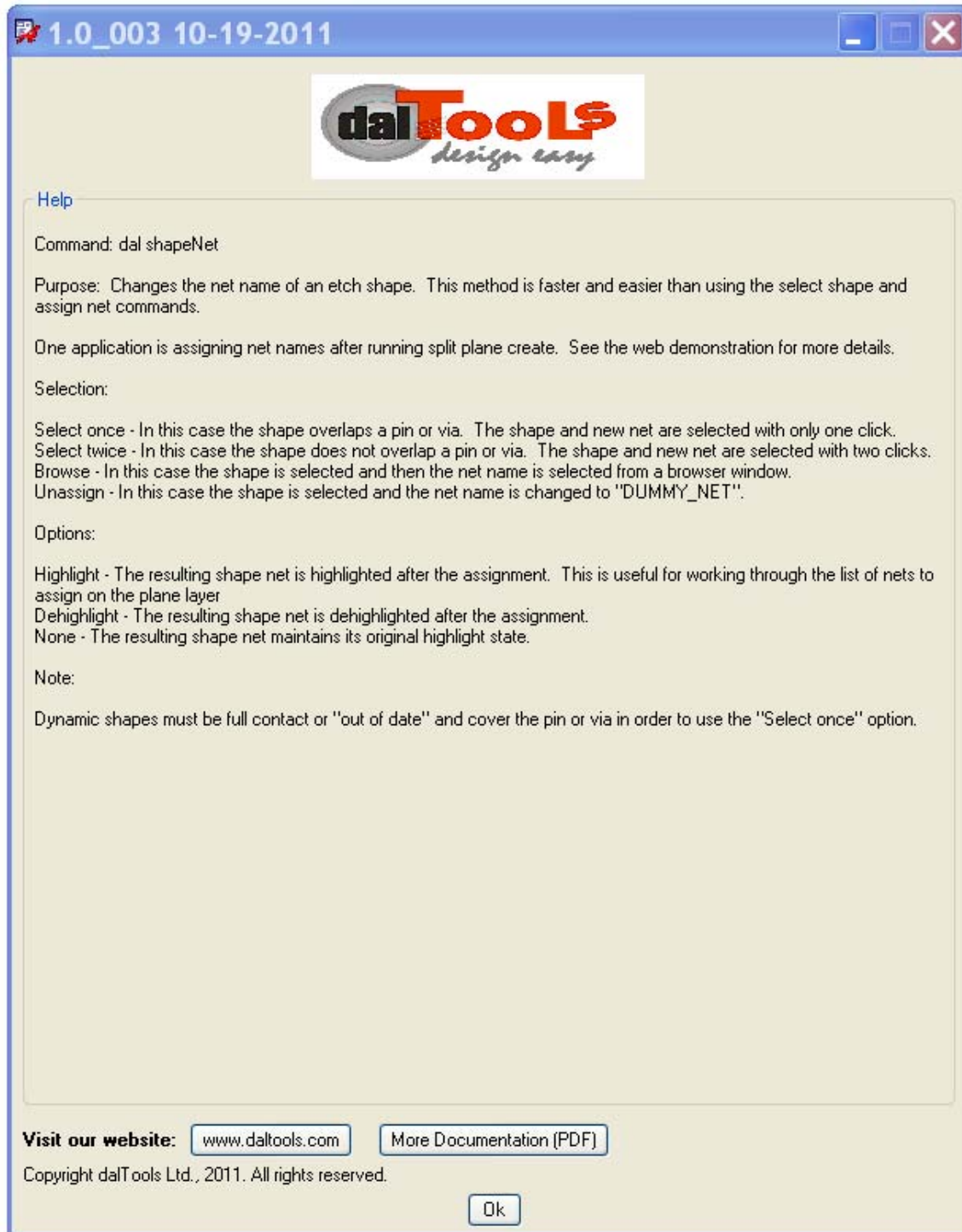



Figure 1 Example

The plane shapes are selected and the net name changes to the via or pin net name under the shape at the selection point.

Help



1.0_003 10-19-2011



Help

Command: dal shapeNet

Purpose: Changes the net name of an etch shape. This method is faster and easier than using the select shape and assign net commands.

One application is assigning net names after running split plane create. See the web demonstration for more details.

Selection:

- Select once - In this case the shape overlaps a pin or via. The shape and new net are selected with only one click.
- Select twice - In this case the shape does not overlap a pin or via. The shape and new net are selected with two clicks.
- Browse - In this case the shape is selected and then the net name is selected from a browser window.
- Unassign - In this case the shape is selected and the net name is changed to "DUMMY_NET".

Options:

- Highlight - The resulting shape net is highlighted after the assignment. This is useful for working through the list of nets to assign on the plane layer
- Dehighlight - The resulting shape net is dehighlighted after the assignment.
- None - The resulting shape net maintains its original highlight state.

Note:

Dynamic shapes must be full contact or "out of date" and cover the pin or via in order to use the "Select once" option.

Visit our website: www.daltools.com [More Documentation \(PDF\)](#)

Copyright dalTools Ltd., 2011. All rights reserved.

Ok