

## Shove

---

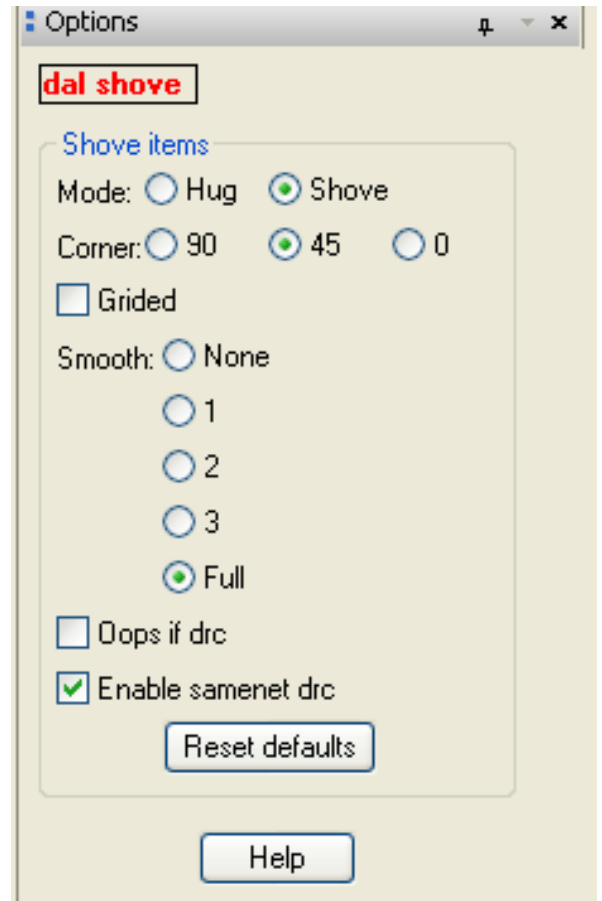
Shoves selected multiple clines around obstacles per the specified parameters.

Features:

- Quickly route through all kinds of obstacles and let the shove remove the drcs automatically. This dramatically increases routing productivity.
- Smooth after shove removes jogs and cleans up routing.

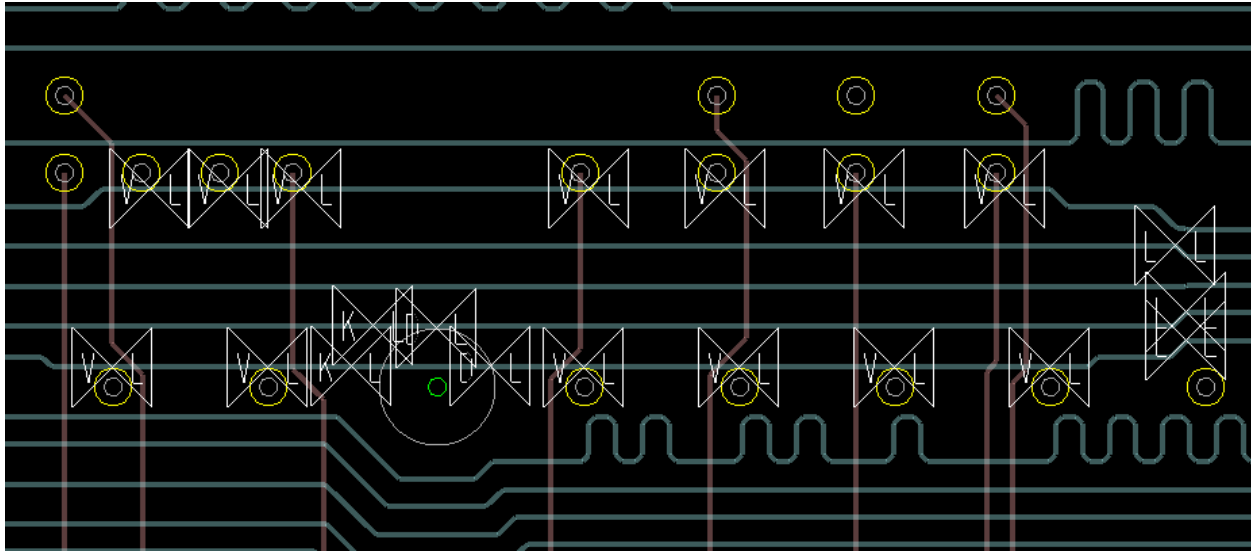
Video demonstration available at:

[www.dalTools.com](http://www.dalTools.com)

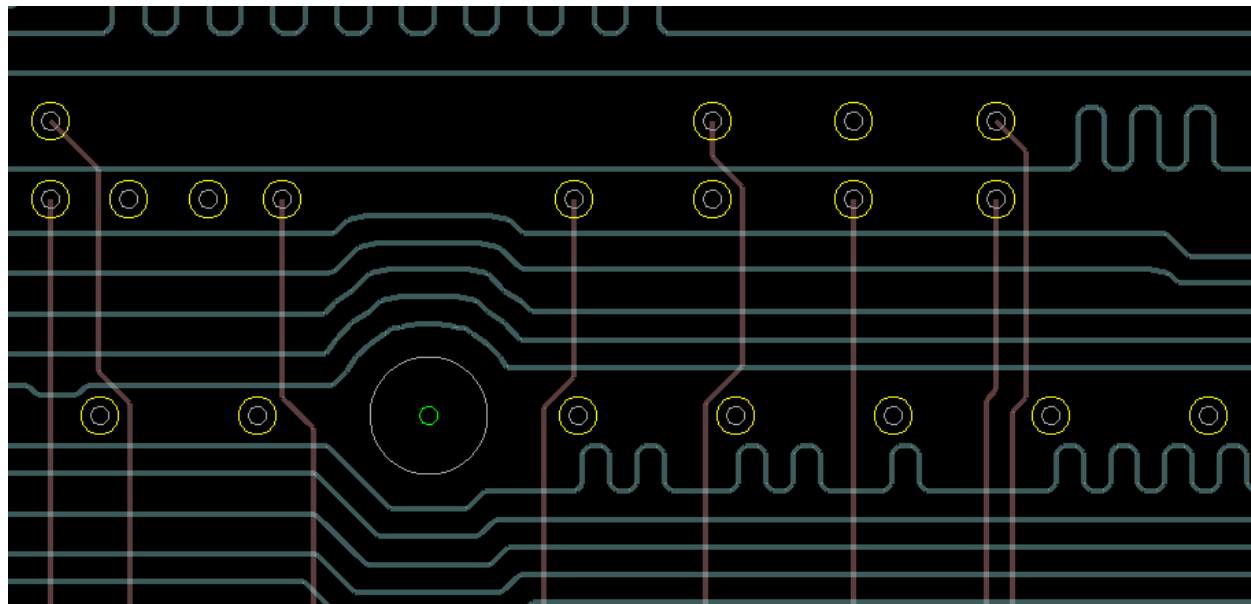


# Example

---



Before



After

# Help

---

