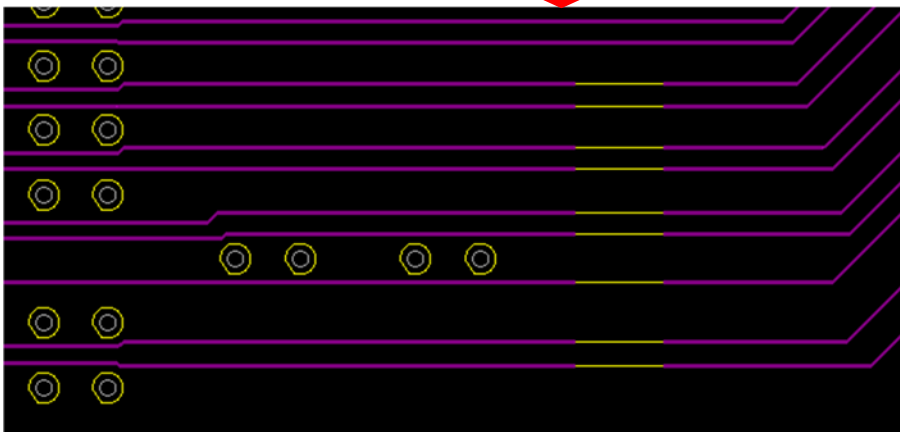
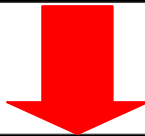
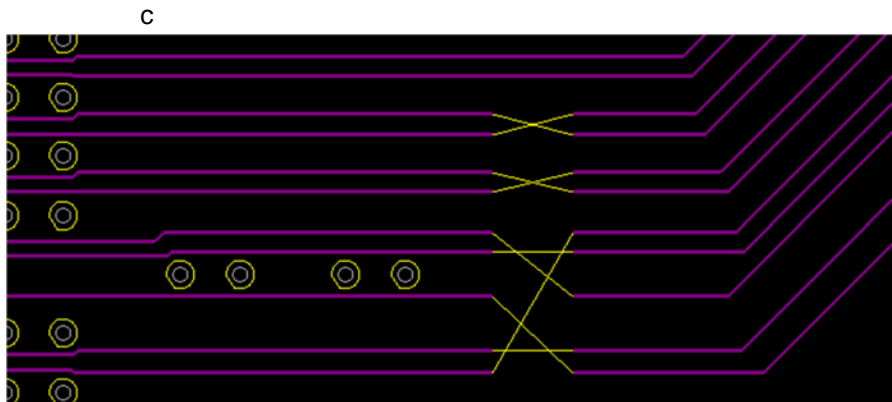
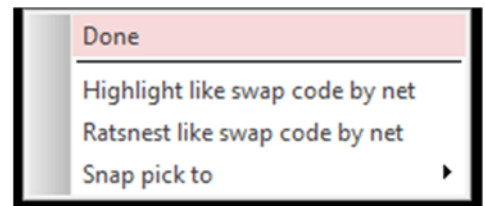


# Swap

Facilitates the rapid swapping of pins and uncrossing of ratsnests by selecting anywhere on the two nets. Also easily swap the xy location of any two objects.

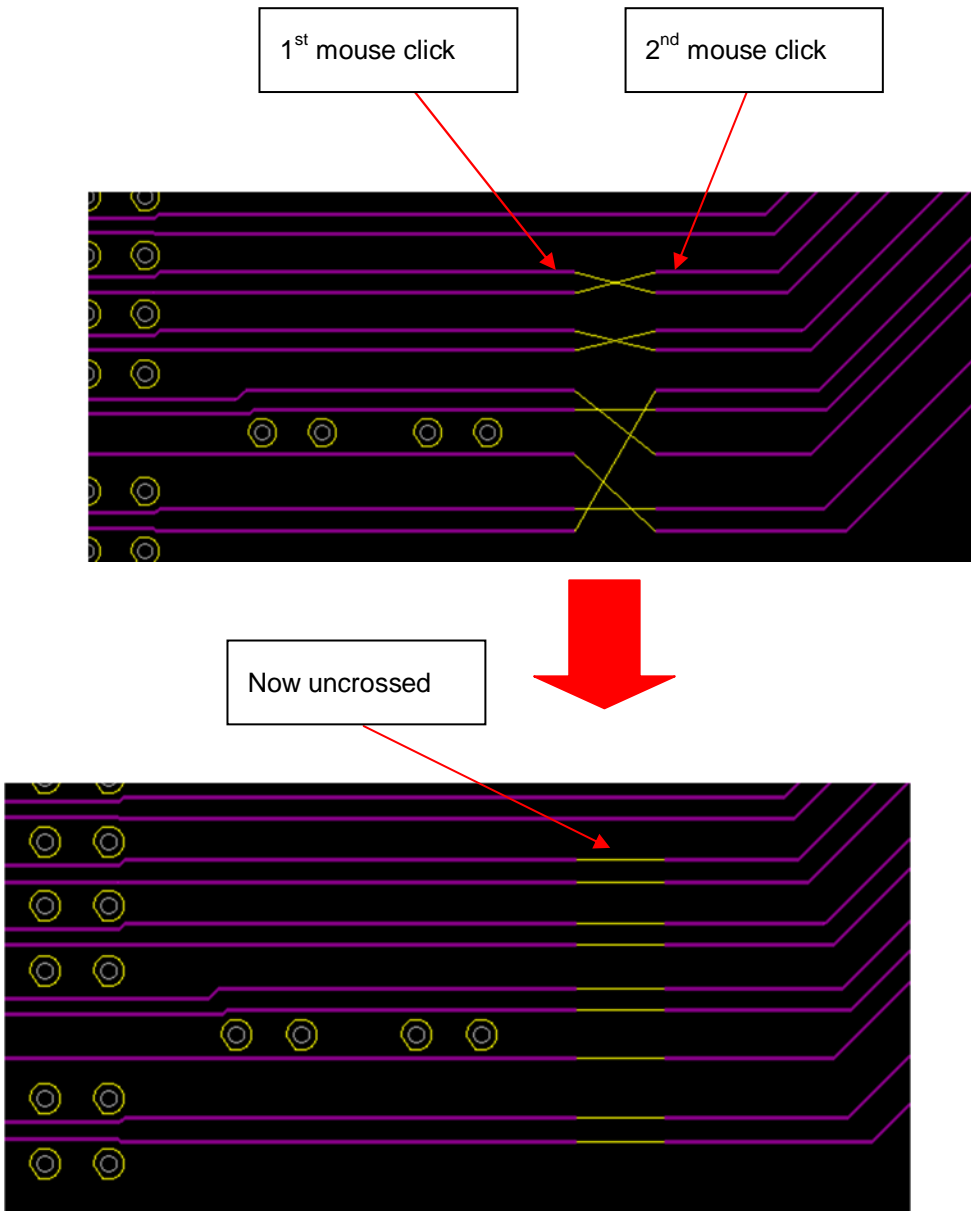
Features:

- ❑ Nets may be routed straight out of parts on both sides and swapped at the location where the routes meet. This is much faster than swapping at the pin locations.
- ❑ Highlight and ratsnest like swap codes for easy pin group/net identification.



# Example

---



# Example

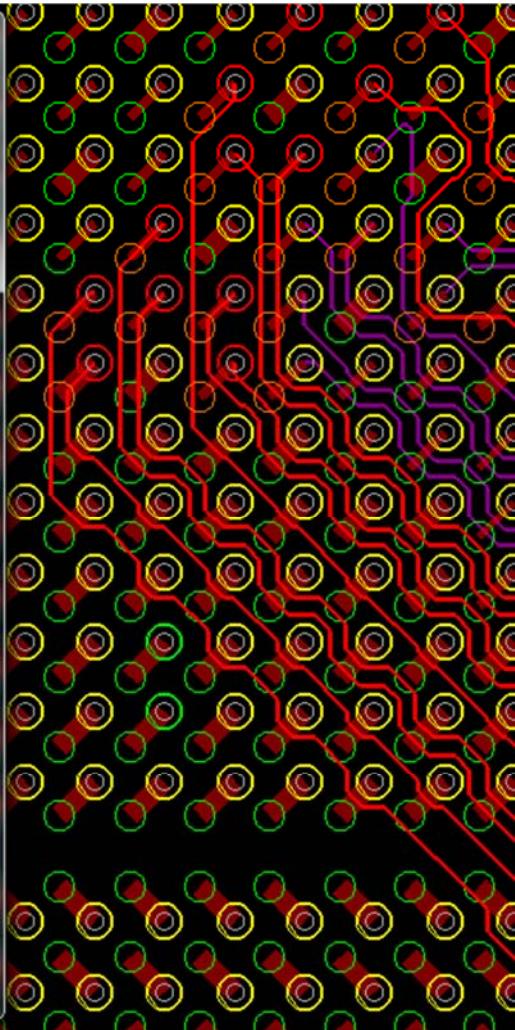
Swap codes are defined in the schematic symbol chips.prt file and carry over as function instances

Only like codes can swap

The screenshot shows a 'Show Element' window with a menu bar (File, Close, Help) and a title bar. The main content area displays the following information:

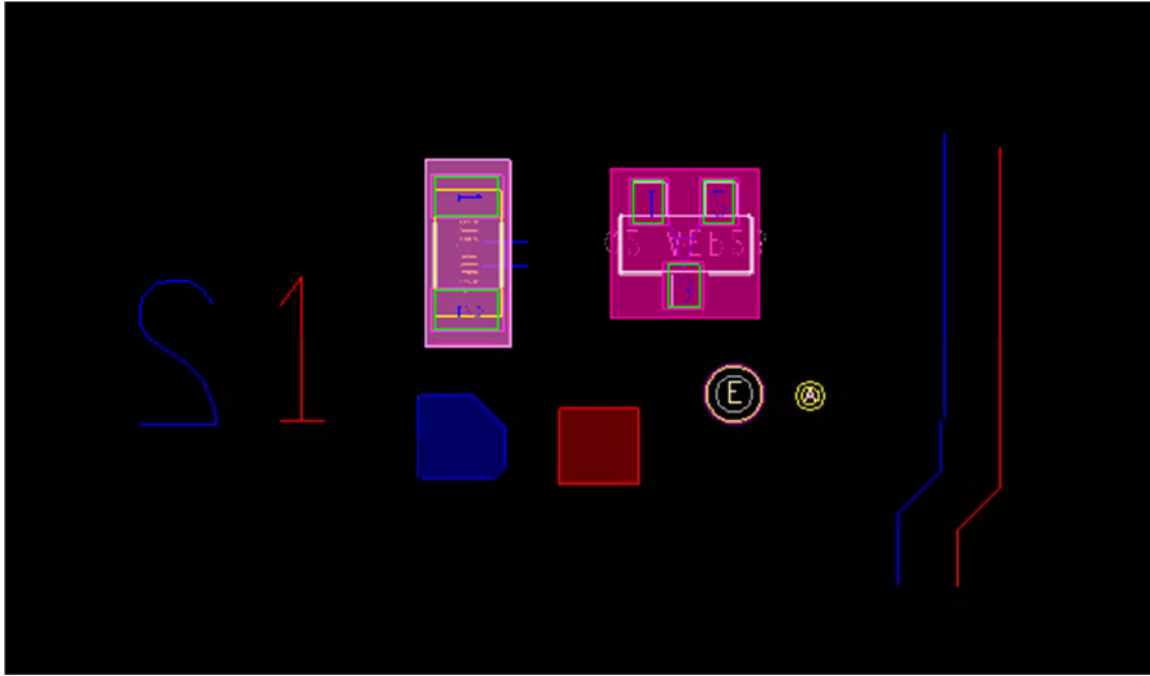
LISTING: 1 element(s)  
< FUNCTION INSTANCE >  
Function Designator: F3692  
Function Type: TYPE17  
Reference Designator: U1\_AE1  
Slot Name: G8  
Device Type: HC1A\_AE760\_FPGA\_R90\_SMT-HC1A\_AE760\_FPGA\_R90, XILINX, XC6V

Pin Name	Pin Number	Pin Use	
AE_MC7_ADDR0	G32	TRI	(43)
AE_MC7_ADDR1	G33	TRI	(43)
AE_MC7_ADDR10	B33	TRI	(43)
AE_MC7_ADDR11	E33	TRI	(43)
AE_MC7_ADDR12	A34	TRI	(43)
AE_MC7_ADDR13	J31	TRI	(43)
AE_MC7_ADDR14	K30	TRI	(43)
AE_MC7_ADDR15	B32	TRI	(43)
AE_MC7_ADDR16	A32	TRI	(43)
AE_MC7_ADDR17	F32	TRI	(43)
AE_MC7_ADDR18	E32	TRI	(43)
AE_MC7_ADDR19	F30	TRI	(43)
AE_MC7_ADDR2	D32	TRI	(43)
AE_MC7_ADDR20	F31	TRI	(43)
AE_MC7_ADDR21	J30	TRI	(43)
AE_MC7_ADDR22	M27	TRI	(43)
AE_MC7_ADDR23	L27	TRI	(43)
AE_MC7_ADDR3	C33	TRI	(43)
AE_MC7_ADDR4	G31	TRI	(43)
AE_MC7_ADDR5	J28	TRI	(43)
AE_MC7_ADDR6	K28	TRI	(43)
AE_MC7_ADDR7	L29	TRI	(43)
AE_MC7_ADDR8	M28	TRI	(43)
AE_MC7_ADDR9	C34	TRI	(43)
AE_MC7_APAR	H29	TRI	(43)
AE_MC7_ASTRB	A35	TRI	
AE_MC7_CMD	P27	TRI	(43)
AE_MC7_DPAR	G36	TRI	(45)
AE_MC7_DQ0	B38	TRI	(45)
AE_MC7_DQ1	A39	TRI	(45)
AE_MC7_DQ10	M31	TRI	(45)



# Swap objects

---



[Quickly swap any object with any other object](#)

# Help

