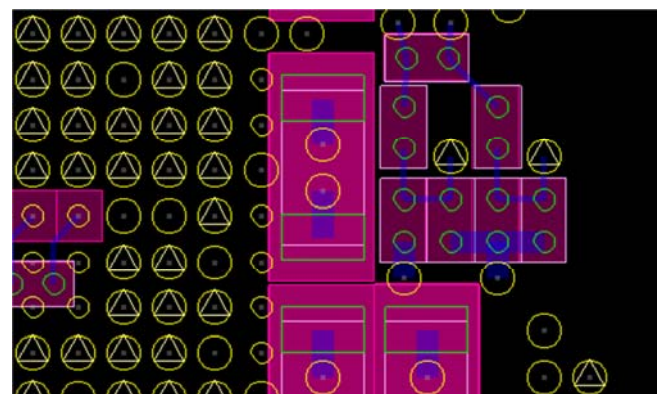
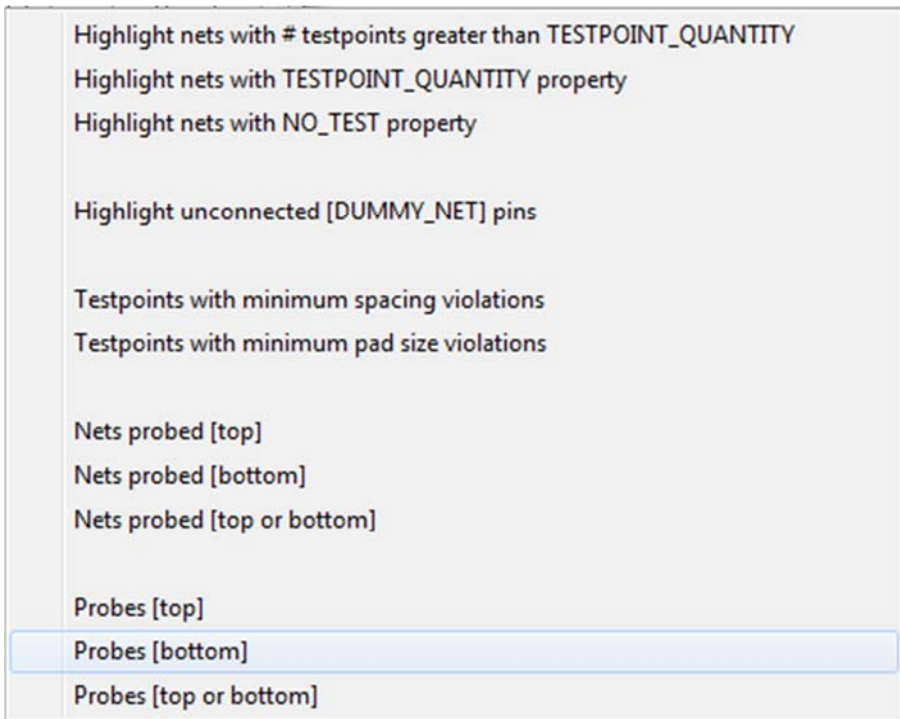
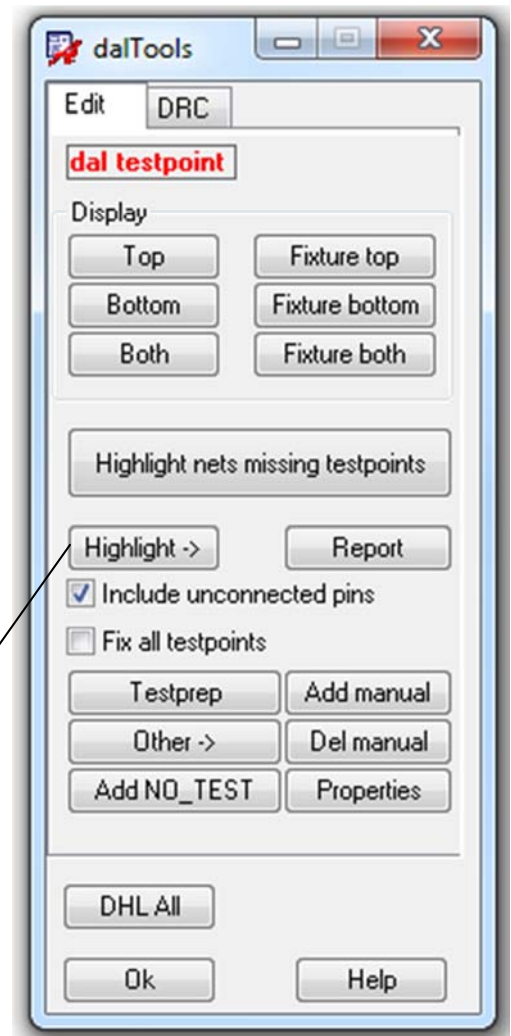


# Testpoint

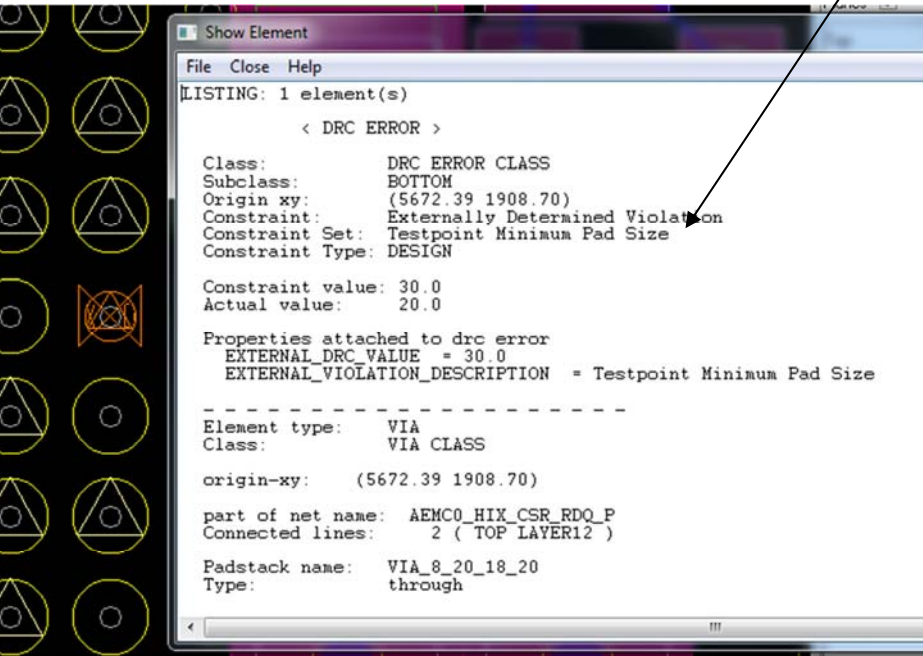
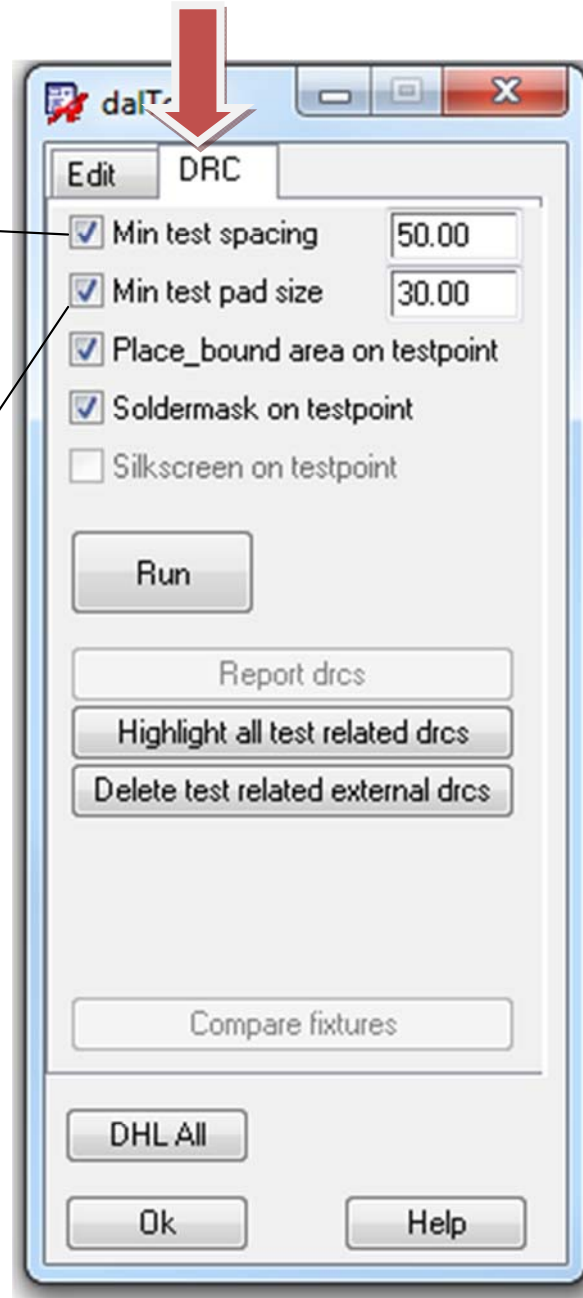
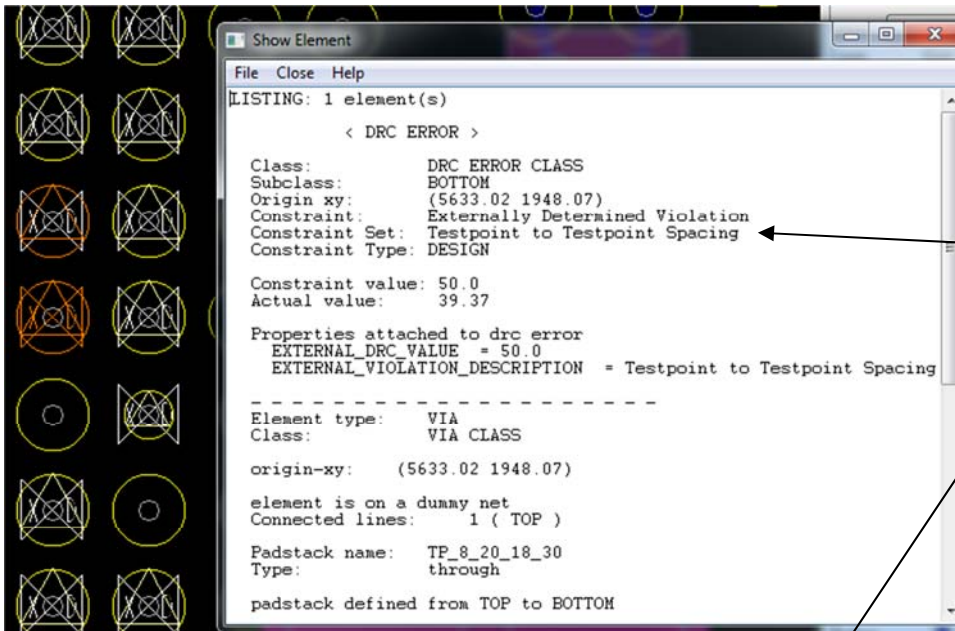
Provides additional useful and effective tools for managing testpoints.

Features:

- ❑ Works with the standard testprep command to make the entire process of adding and verifying testpoints much faster and easier.
- ❑ Automatic layer control for top, bottom or both testpoint layers.
- ❑ Highlight nets with missing testpoints.
- ❑ Many other convenient highlighting features.
- ❑ DRC of minimum pad size, minimum spacing, probes on soldermask, etc




# DRC



# Help

1.0\_001 04-30-2013



## Help

Command: dal testpoint

Purpose: Provides additional useful and effective tools for managing testpoints.

### Display

- Top - Turns on the layers associated with top testpoints.
- Fixture top - Turns on the layers associated with the top fixture.
- Bottom - Turns on the layers associated with bottom testpoints.
- Fixture bottom - Turns on the layers associated with bottom fixture.
- Both - Turns on the layers associated with top and bottom testpoints.
- Fixture both - Turns on the layers associated with the top and bottom fixture.

Highlight nets missing testpoints - Highlights any net without a testpoint.  
Highlight-> Various convenience highlighting features.

Include unconnected pins - When checked dummy\_nets are required to have testpoints.  
Fix all testpoints - Locks all testpoints in place.

Testprep - Shortcut to the testprep command.  
Add manual - Shortcut the the add manual command.  
Other-> Shortcuts to the create fixture and testprep report.  
Del manual -Shortcut to the delete manual command.  
Add NO\_TEST - Shortcut to add the NO\_TEST property to a net.  
Properties - Shortcut to the add properties command.

DHL All - Dehighlights everything.

### DRC Tab->

- Min test spacing - Minimum spacing between testpoint centers.
- Min test pad size - Minimum diameter of the tespoint pad.
- Place\_bound are on testpoint - Creates a drc when a testpoint is on a place\_bound shape.
- Soldermask on testpoint - Creates a drc when a testpoint has soldermask on the pad.
- Silkscreen - Future enhancement.

Run - Executes the drc funtion.  
Hightlight all test related drcs - Highlights objects with tespoint drcs for quick identification.  
Delete test releated external drcs - Remove any drcs create with the command.

Compare fixtures - Future enhancement.

**Visit our website:** [www.daltools.com](http://www.daltools.com) [More Documentation \(PDF\)](#) [Web Demonstration](#)

Copyright dalTools LLC., 2013. All rights reserved.

Ok