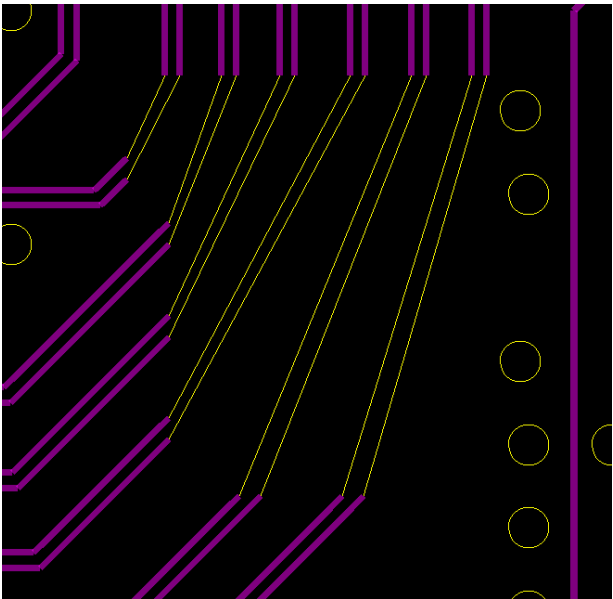
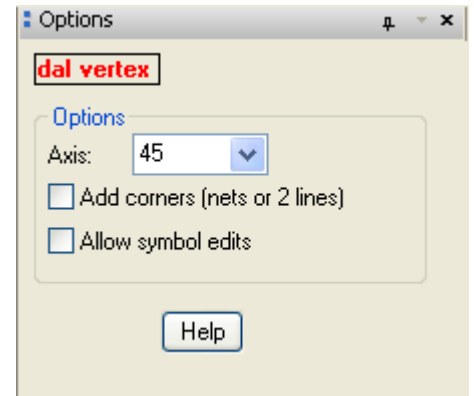


Vertex

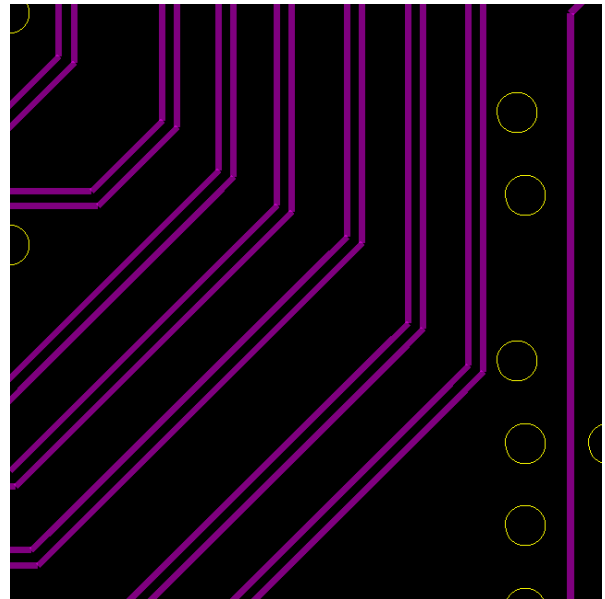
Extend or trim lines and arcs to an object intersection or axis.

Features:

- ❑ Multiple object extend or trim.
- ❑ Automatically adds corners.
- ❑ Full arc trim/extend support.



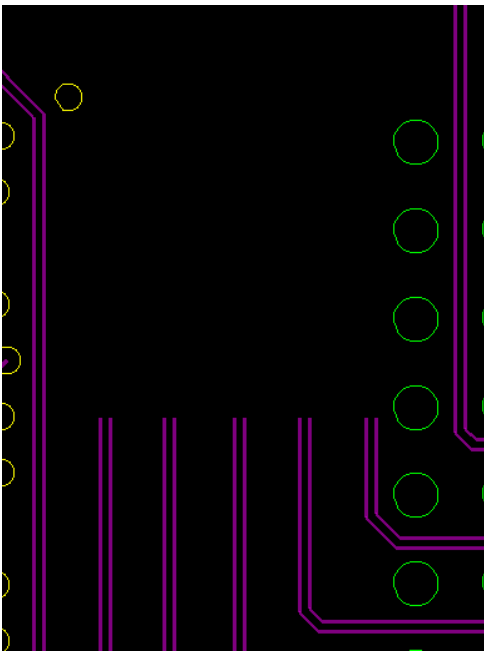
Before



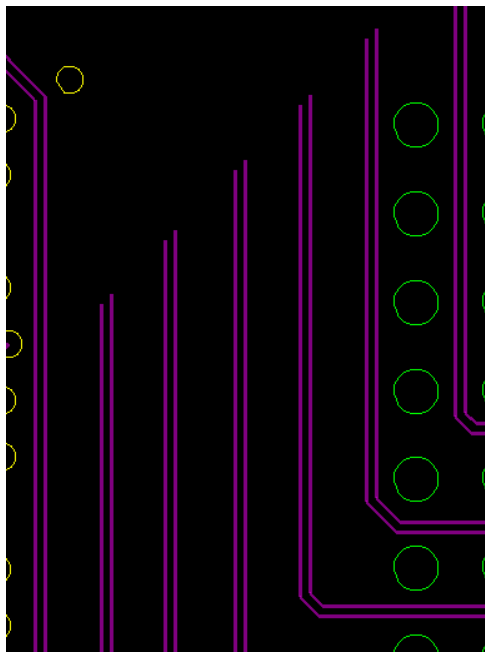
After

[Extend and add corners feature](#)

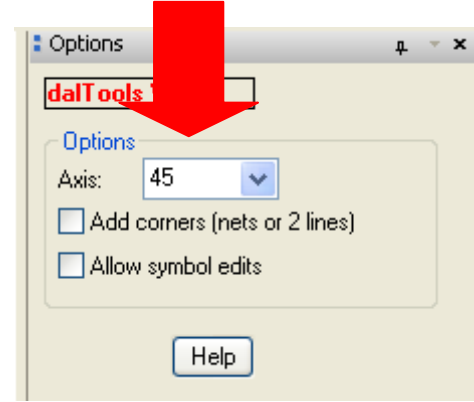
Examples



Before



After



Extend to a 45 degree axis

DHMS) +/- 10%	
H/SPACING	
DIFF	TYPE
.006	TOP
GROUND	
.005	SIGNAL
.005	SIGNAL

Before

DHMS) +/- 10%	
H/SPACING	
DIFF	TYPE
.006	TOP
GROUND	
.005	SIGNAL
.005	SIGNAL

After

Trim to a vertical line

Help

