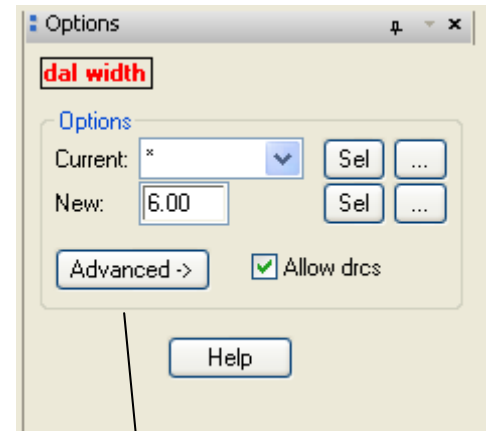


## Width

Changes line widths from a specified width. Also has advanced highlight and reporting features.

Features:

- ❑ Intelligent from/to line width changes.
- ❑ Gets form width settings quickly by selection or popup form.
- ❑ Option to disallow line width changes if a drc violation results.
- ❑ Change highlighted lines option.
- ❑ Highlight segments by line width.
- ❑ Highlight segments with drcs.
- ❑ Reports line widths and smallest etch line width.
- ❑ Supports clines/lines with multiple line widths.

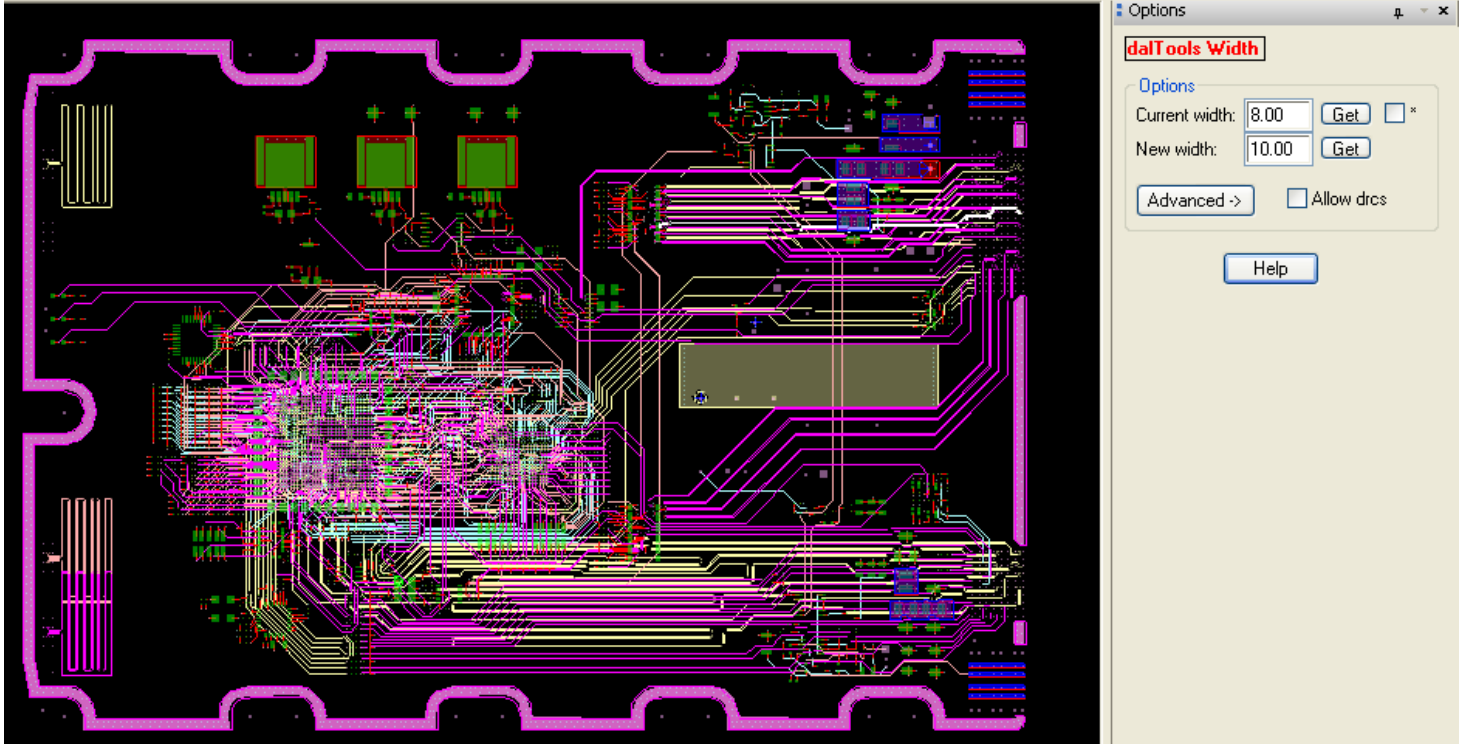


Video demonstration available at:

[www.dalTools.com](http://www.dalTools.com)

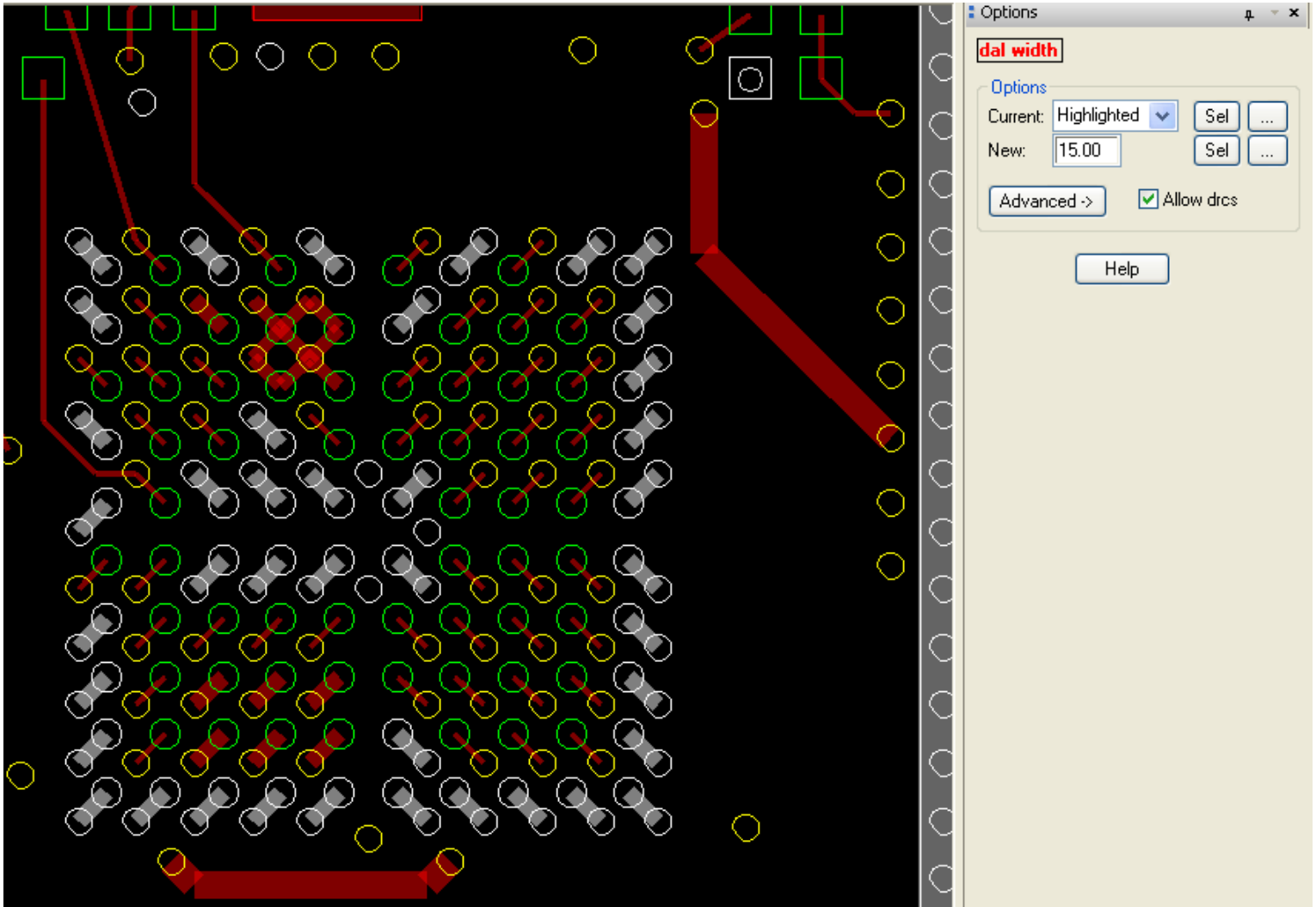
Highlight like width by selection  
Highlight like width by current width  
Highlight segment drcs  
Dehighlight all segments  
  
Resize/respace diffpair  
  
Report

# Example



Changes all selected 8 width lines to 10 width lines

# Example



Changes all highlighted clines to 15 width lines

# Example



Quick line width availability selection by form

# Report

The screenshot shows a window titled "Report" with a menu bar containing "File", "Close", and "Help". The main content area displays the following text:

```
(-----)
(
(   dal width
(
(   Drawing       : width.brd
(   Software Version : 16.35037
(   Date/Time      : Mon Sep 26 23:34:34 2011
(-----)

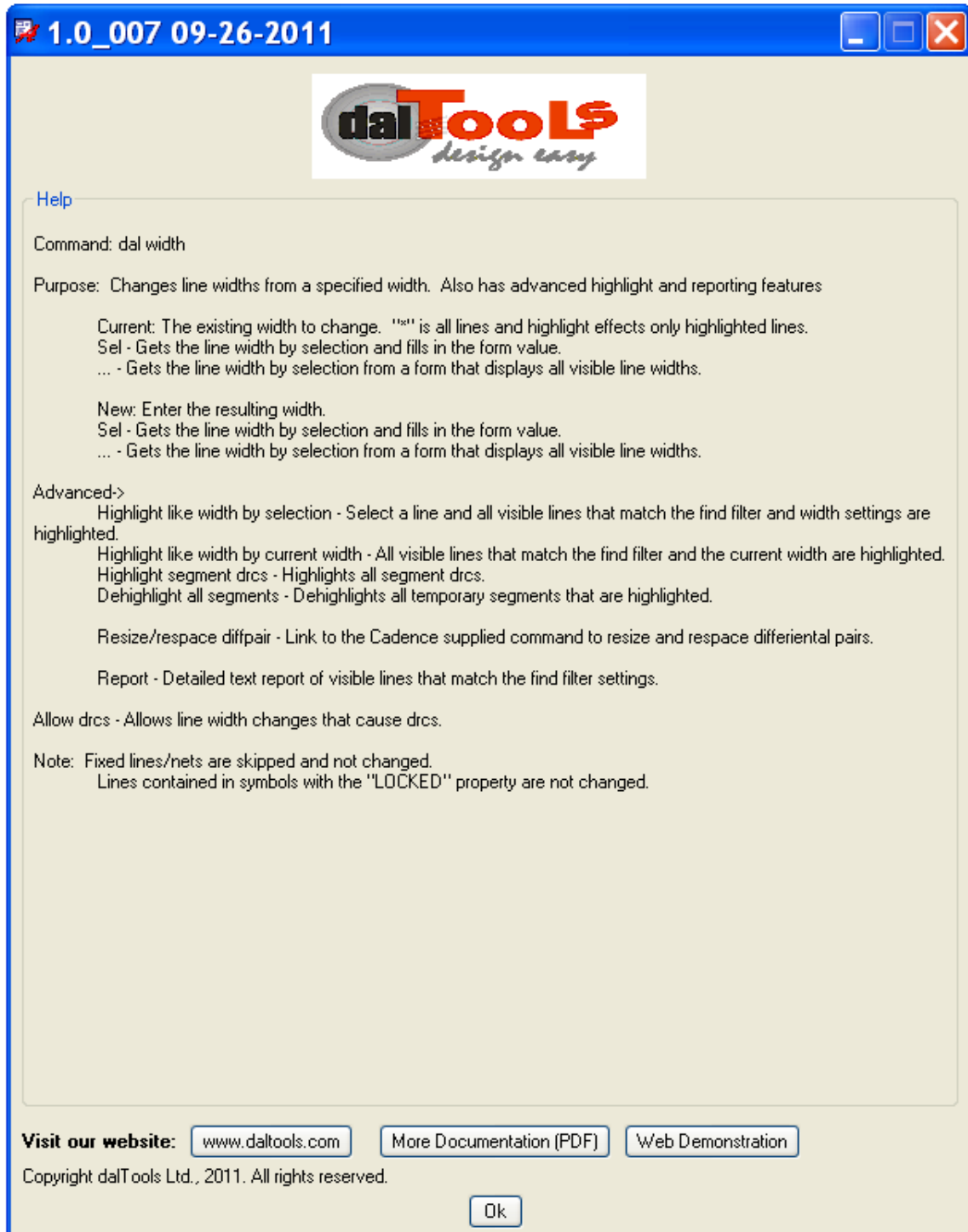
6.0 mils is the smallest line width on all etch layers.

Visible objects that match the find filter settings:


# Width Qty
1  6.0 (1874)
2  8.0 (10)
3 10.0 (35)
4 12.0 (42)
5 15.0 (149)
6 16.0 (8)
7 20.0 (24)
8 25.0 (201)

6.0
((1860.0 3845.0) (1870.0 3760.0)), "ETCH/BOTTOM", line
((1865.0 3790.0) (1895.0 3760.0)), "ETCH/TOP", line
((1895.0 3760.0) (1925.0 3760.0)), "ETCH/TOP", line
((1870.0 3760.0) (1925.0 3760.0)), "ETCH/BOTTOM", line
((1865.0 3790.0) (1865.0 3845.0)), "ETCH/TOP", line
((1870.0 3590.0) (1925.0 3590.0)), "ETCH/BOTTOM", line
((1835.0 3735.0) (1925.0 3645.0)), "ETCH/LAYER4", line
((1870.0 3645.0) (1925.0 3645.0)), "ETCH/BOTTOM", line
((1870.0 3700.0) (1925.0 3700.0)), "ETCH/BOTTOM", line
((1870.0 3370.0) (1925.0 3370.0)), "ETCH/BOTTOM", line
((1870.0 3535.0) (1925.0 3535.0)), "ETCH/BOTTOM", line
((1870.0 3325.0) (1925.0 3325.0)), "ETCH/BOTTOM", line
```

# Help



1.0\_007 09-26-2011



[Help](#)

Command: dal width

Purpose: Changes line widths from a specified width. Also has advanced highlight and reporting features

Current: The existing width to change. "\*" is all lines and highlight effects only highlighted lines.  
Sel - Gets the line width by selection and fills in the form value.  
... - Gets the line width by selection from a form that displays all visible line widths.

New: Enter the resulting width.  
Sel - Gets the line width by selection and fills in the form value.  
... - Gets the line width by selection from a form that displays all visible line widths.

Advanced->

- Highlight like width by selection - Select a line and all visible lines that match the find filter and width settings are highlighted.
- Highlight like width by current width - All visible lines that match the find filter and the current width are highlighted.
- Highlight segment drcs - Highlights all segment drcs.
- Dehighlight all segments - Dehighlights all temporary segments that are highlighted.

Resize/respace diffpair - Link to the Cadence supplied command to resize and respace differential pairs.

Report - Detailed text report of visible lines that match the find filter settings.

Allow drcs - Allows line width changes that cause drcs.

Note: Fixed lines/nets are skipped and not changed.  
Lines contained in symbols with the "LOCKED" property are not changed.

**Visit our website:** [www.daltools.com](http://www.daltools.com) [More Documentation \(PDF\)](#) [Web Demonstration](#)

Copyright dalTools Ltd., 2011. All rights reserved.

[Ok](#)