

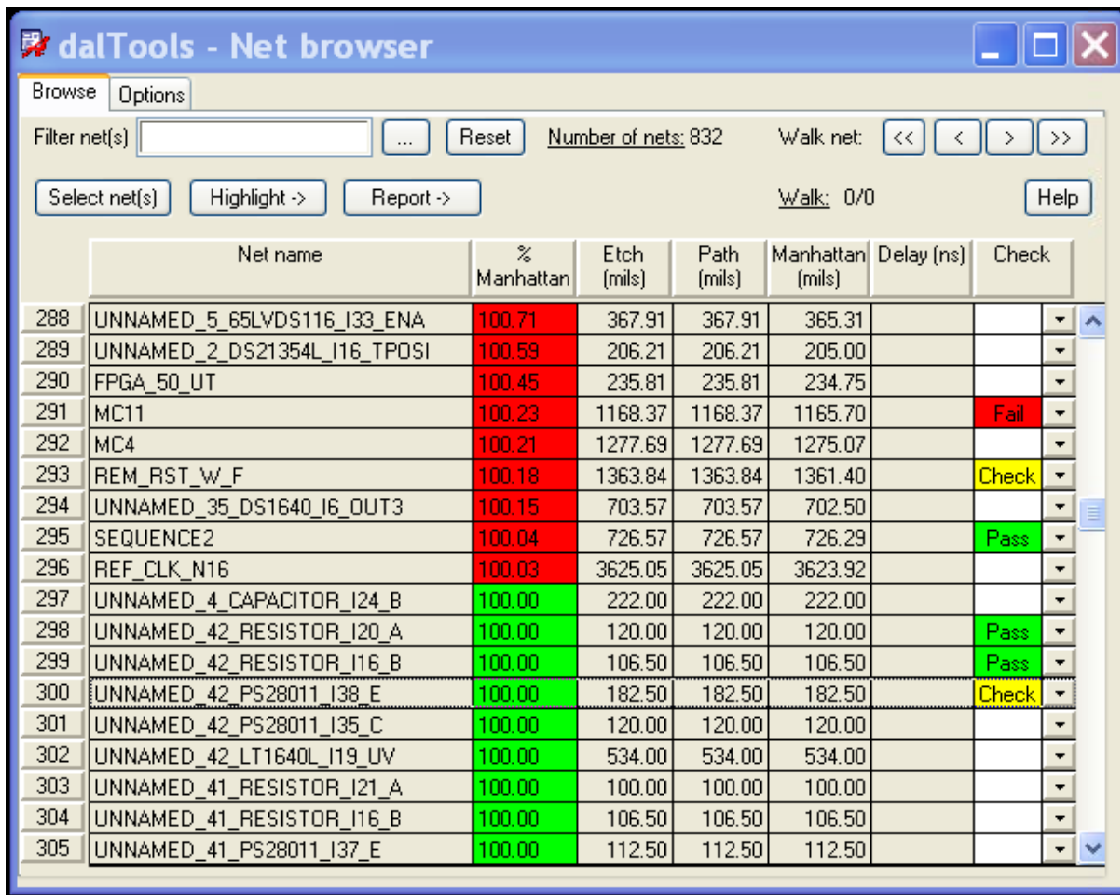
# Net Browser

Comprehensive net browsing tool.

December 2010

Version 1.0

24-241



The screenshot shows the 'dalTools - Net browser' window. It has a 'Browse' tab and an 'Options' tab. Below the tabs are input fields for 'Filter net(s)', 'Reset', 'Number of nets: 832', 'Walk net:' (with navigation buttons), 'Select net(s)', 'Highlight ->', 'Report ->', 'Walk: 0/0', and a 'Help' button. The main area contains a table with the following columns: Net name, % Manhattan, Etch (mils), Path (mils), Manhattan (mils), Delay (ns), and Check. The table lists 17 nets, with status indicators in the 'Check' column: 'Fail' (red), 'Check' (yellow), and 'Pass' (green).

	Net name	% Manhattan	Etch (mils)	Path (mils)	Manhattan (mils)	Delay (ns)	Check
288	UNNAMED_5_65LVDS116_I33_ENA	100.71	367.91	367.91	365.31		
289	UNNAMED_2_DS21354L_I16_TPOSI	100.59	206.21	206.21	205.00		
290	FPGA_50_UT	100.45	235.81	235.81	234.75		
291	MC11	100.23	1168.37	1168.37	1165.70		Fail
292	MC4	100.21	1277.69	1277.69	1275.07		
293	REM_RST_W_F	100.18	1363.84	1363.84	1361.40		Check
294	UNNAMED_35_DS1640_I6_OUT3	100.15	703.57	703.57	702.50		
295	SEQUENCE2	100.04	726.57	726.57	726.29		Pass
296	REF_CLK_N16	100.03	3625.05	3625.05	3623.92		
297	UNNAMED_4_CAPACITOR_I24_B	100.00	222.00	222.00	222.00		
298	UNNAMED_42_RESISTOR_I20_A	100.00	120.00	120.00	120.00		Pass
299	UNNAMED_42_RESISTOR_I16_B	100.00	106.50	106.50	106.50		Pass
300	UNNAMED_42_PS28011_I38_E	100.00	182.50	182.50	182.50		Check
301	UNNAMED_42_PS28011_I35_C	100.00	120.00	120.00	120.00		
302	UNNAMED_42_LT1640L_I19_UV	100.00	534.00	534.00	534.00		
303	UNNAMED_41_RESISTOR_I21_A	100.00	100.00	100.00	100.00		
304	UNNAMED_41_RESISTOR_I16_B	100.00	106.50	106.50	106.50		
305	UNNAMED_41_PS28011_I37_E	100.00	112.50	112.50	112.50		

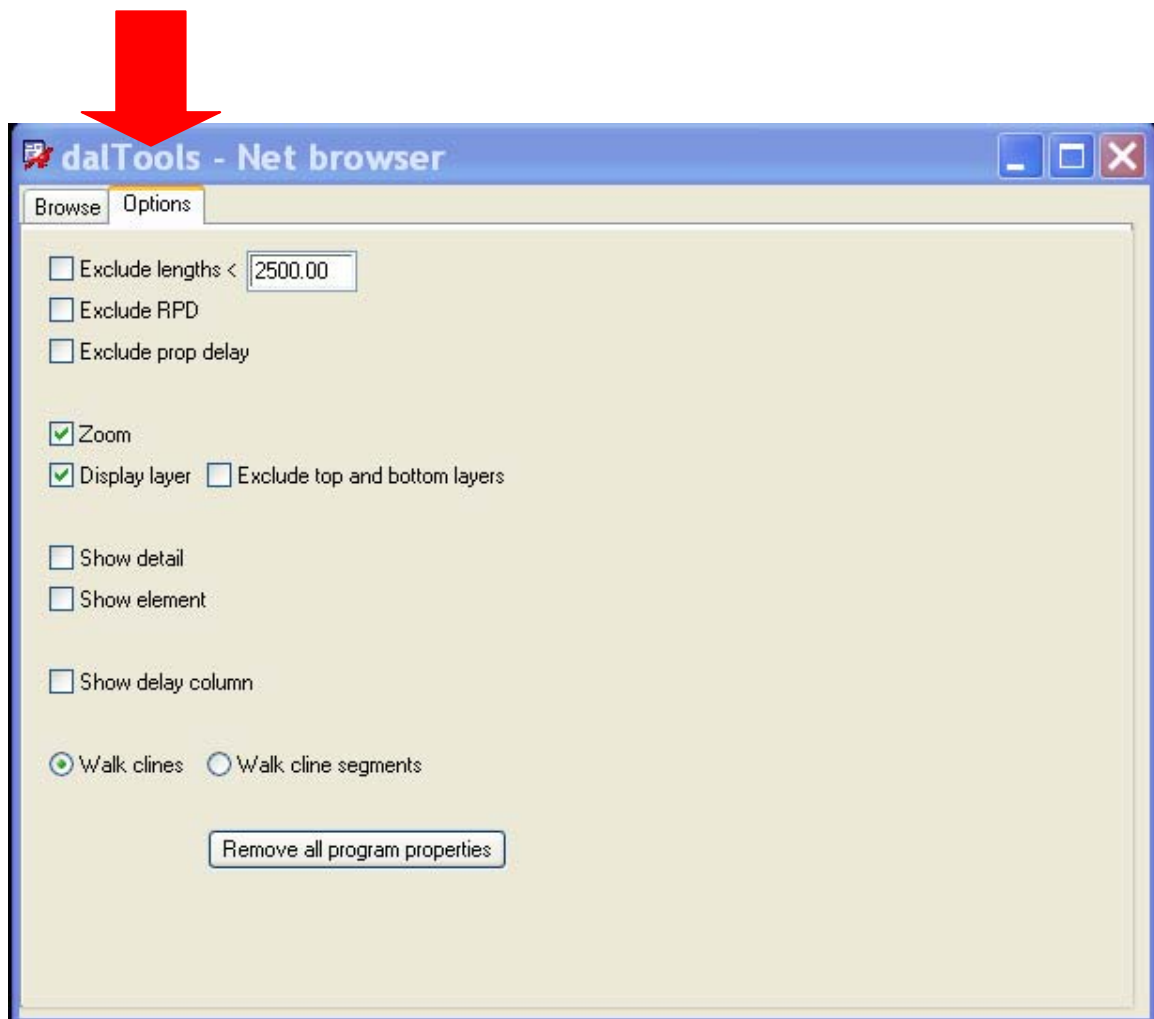
Video demonstrations available at:

[www.dalTools.com](http://www.dalTools.com)

## Features

---

- ❑ Facilitates the checking and verification of nets and routing.
- ❑ Highlights and walk the net contents
- ❑ Displays %manhattan length to verify routing lengths.



# Help



---

THE INFORMATION CONTAINED IN THIS DOCUMENT IS THE PROPRIETARY AND CONFIDENTIAL INFORMATION OF dalTools Inc. YOU MAY NOT DISCLOSE, PROVIDE OR MAKE AVAILABLE THIS DOCUMENT, OR ANY INFORMATION CONTAINED IN THIS DOCUMENT, TO ANY THIRD PARTY, WITHOUT THE PRIOR WRITTEN CONSENT OF dalTools INC.

The Information in this document is provided for use with dalTools Inc. ("dalTools") products. No license, express or implied, to any intellectual property associated with this document or such products is granted by this document.

All products described in this document whose name is prefaced by "dalTools" (or those companies that have licensed technology to dalTools) and are protected by patents, trade secrets, copyrights or other industrial property rights.

The dalTools products described in this document may still be in development. The final form of each product and release date thereof is at the sole and absolute discretion of dalTools. Your purchase, license and/or use of dalTools products shall be subject to dalTools then current sales terms and conditions.

### Trademarks

The following are trademarks of dalTools Inc.:

The dalTools Logo:  
dalTools



Trademarks of other companies

Allegro is a registered trademark of Cadence Corporation

Adobe and Adobe Reader are registered trademarks of Adobe Systems Incorporated

© dalTools™ Inc. 2010.

All Rights Reserved.

Richardson, TX 75082