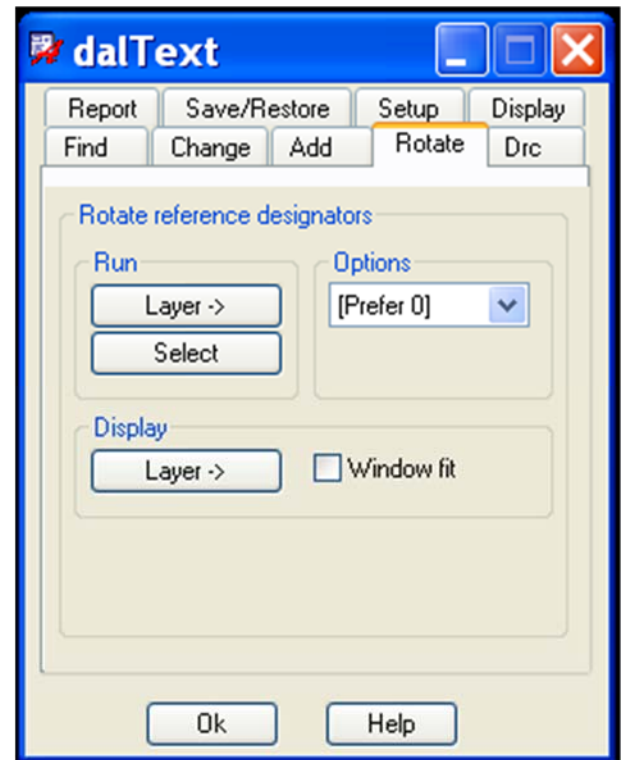


## Text

Dramatically increases productivity and quality when creating silkscreen and assembly documentation. Provides a comprehensive text editing tool within the Allegro editor.

### Features:

- ❑ Automatic rotation of reference designator text for silkscreen and assembly documentation.
- ❑ Detailed real time and/or batch DRC of text to pad, via, soldermask and paste features. Also highlights and drcs symbols with missing refes and incorrect refdes locations.
- ❑ Save and restore of custom textblock configurations.
- ❑ Customized text reports.
- ❑ Highlight by textblock and specific rotations.
- ❑ Text search and replace feature.
- ❑ Text to lines and/or shape converter.
- ❑ Multiple text line editing feature. Useful when change drawing notes, etc.
- ❑ Pin number automation in symbols.
- ❑ Custom variable text support for example when changing the text in title blocks. Part number, revision, page, etc.

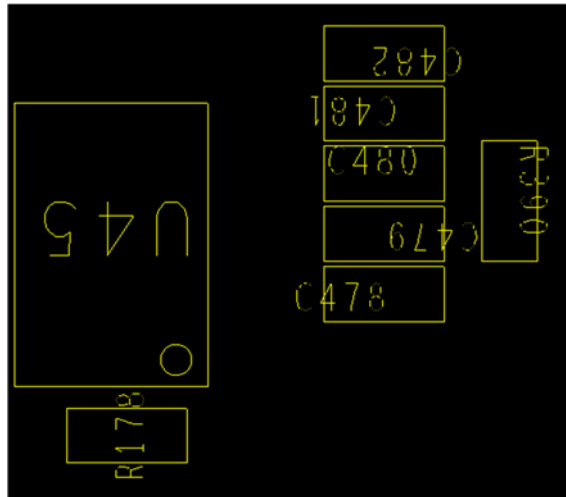


Video demonstration available at:

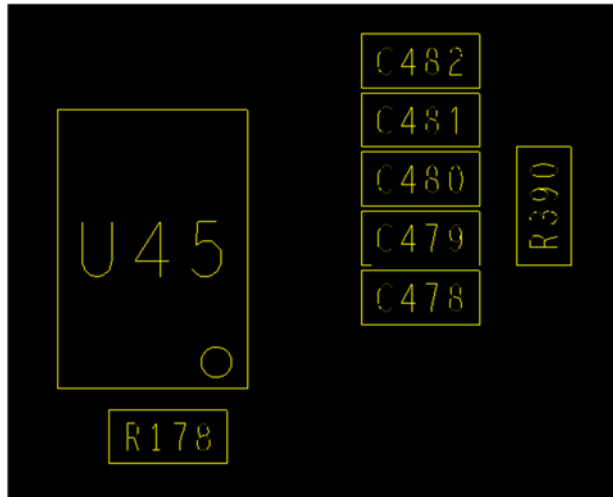
[www.dalTools.com](http://www.dalTools.com)

## Rotate

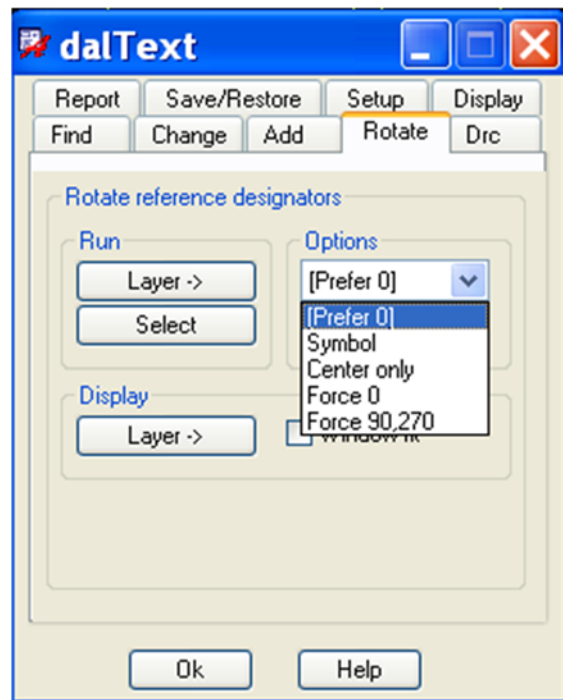
---



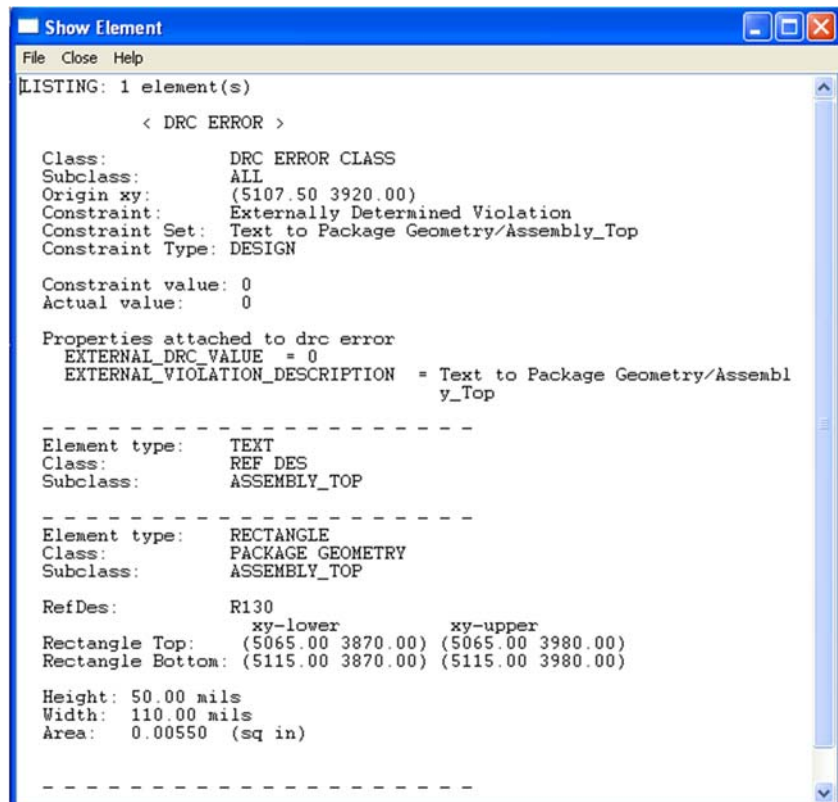
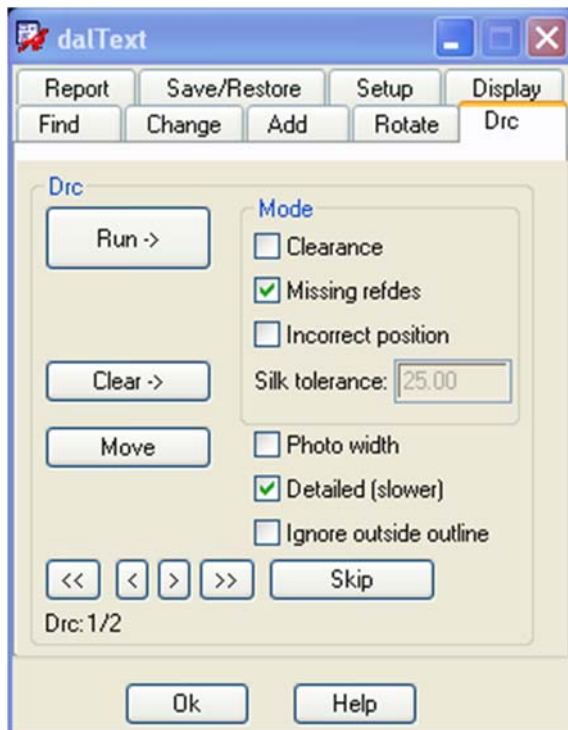
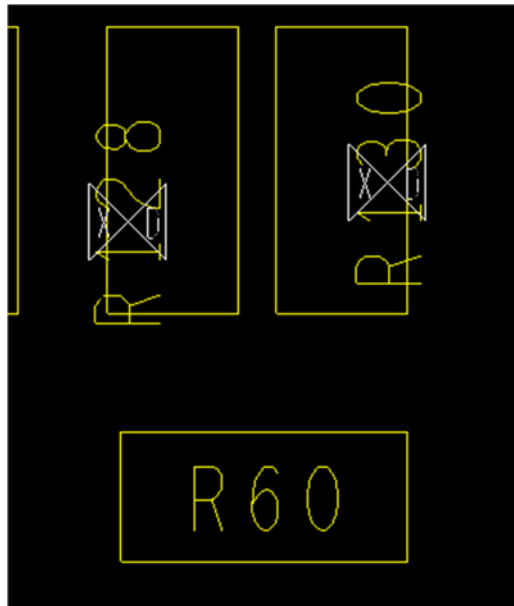
Before



After

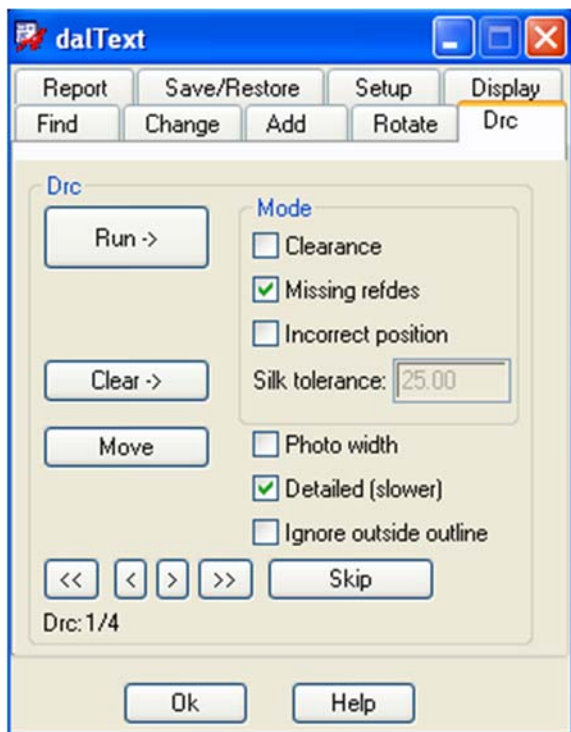
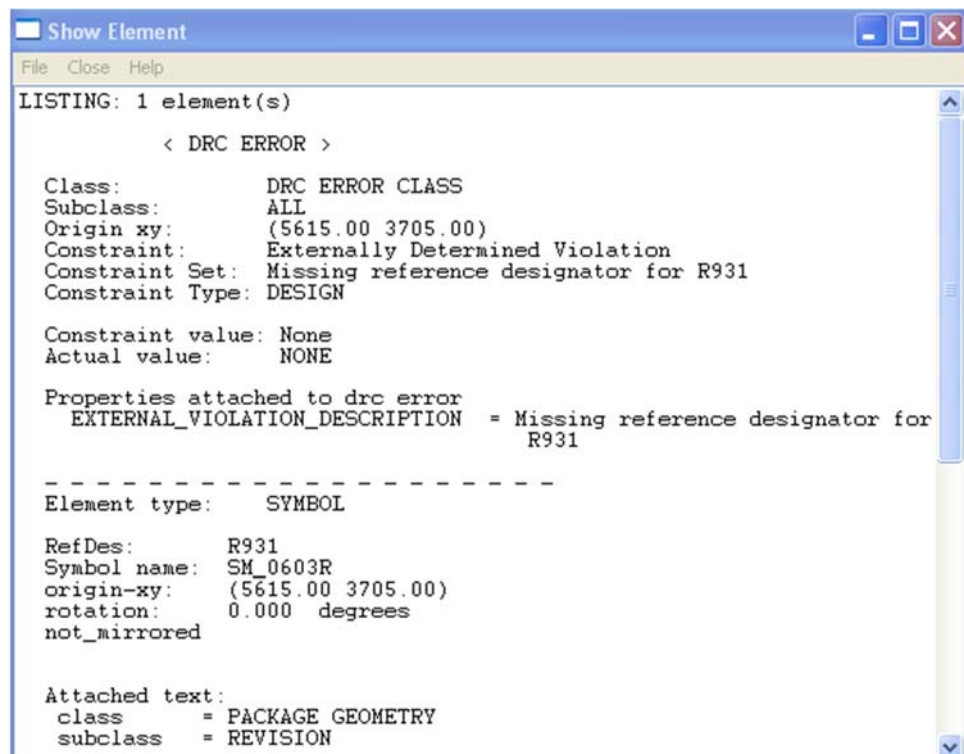
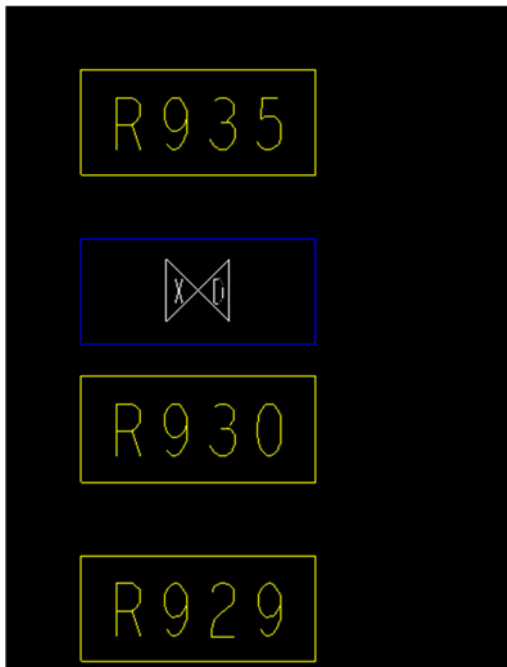


# Drc



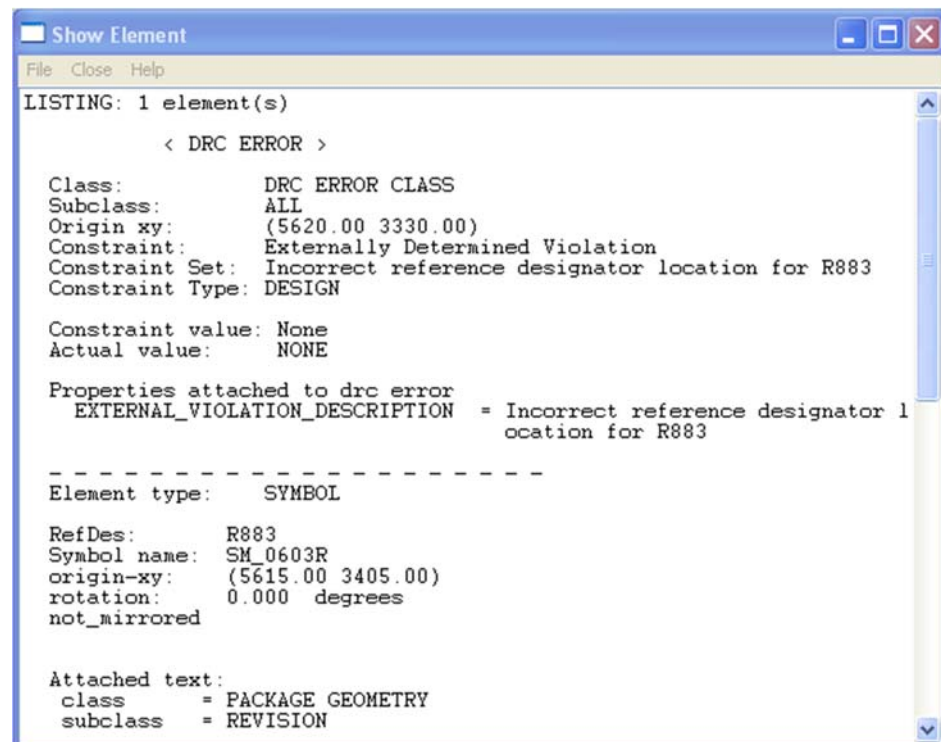
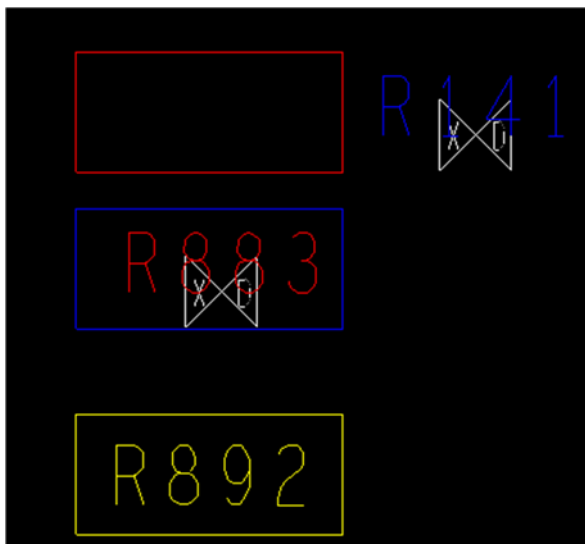
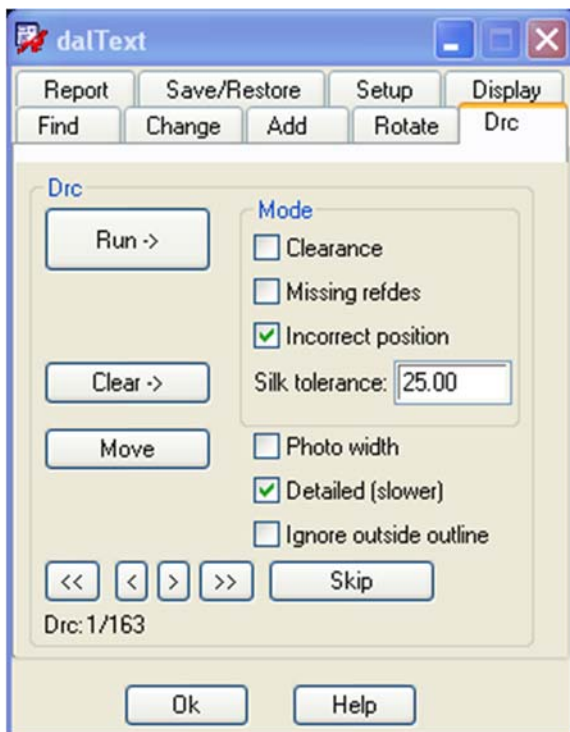
## Text clearance check

## Drc (continued)



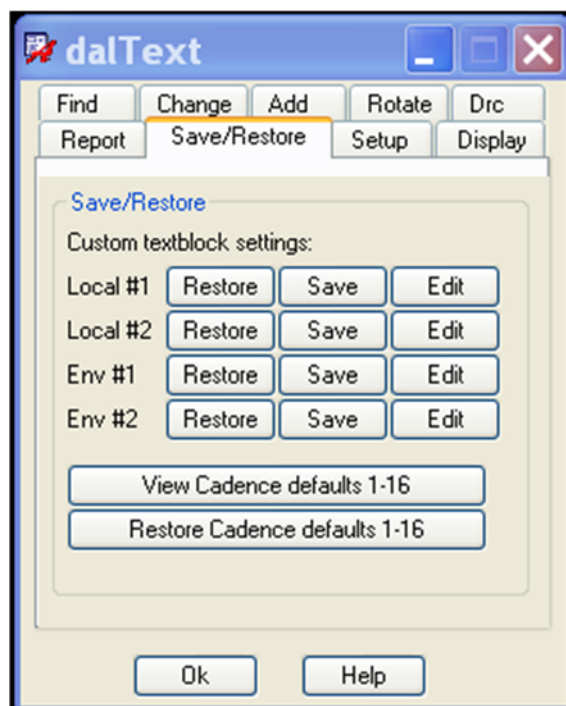
### [Missing refes check](#)

## Drc (continued)



## Incorrect position check

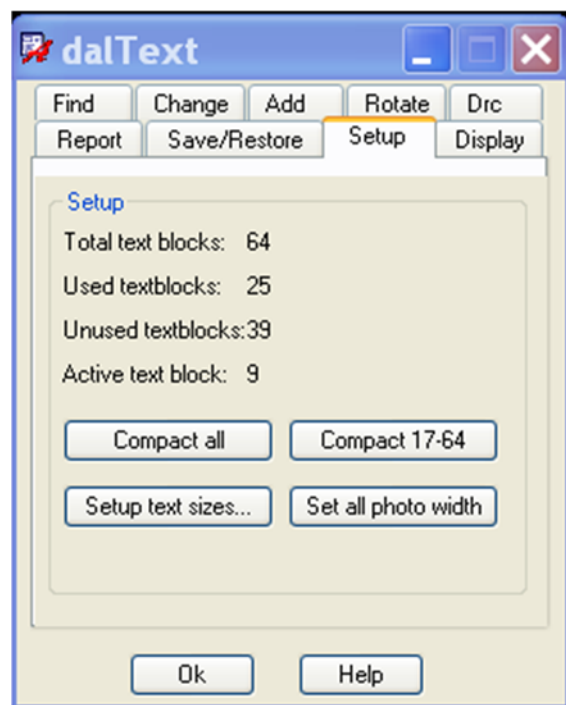
## Save/Restore



#Name	Height	Width	CharSpace	LineSpace	PhotoWidth
Tb 1	40 MIL	16 MIL	6 MIL	31 MIL	0 MIL
Tb 2	31 MIL	23 MIL	8 MIL	39 MIL	0 MIL
Tb 3	50 MIL	38 MIL	13 MIL	63 MIL	0 MIL
Tb 4	63 MIL	47 MIL	16 MIL	79 MIL	0 MIL
Tb 5	75 MIL	56 MIL	19 MIL	96 MIL	0 MIL
Tb 6	80 MIL	60 MIL	20 MIL	100 MIL	0 MIL
Tb 7	94 MIL	69 MIL	23 MIL	117 MIL	0 MIL
Tb 8	100 MIL	75 MIL	25 MIL	125 MIL	0 MIL
Tb 9	125 MIL	93 MIL	31 MIL	156 MIL	0 MIL
Tb 10	156 MIL	117 MIL	62 MIL	195 MIL	0 MIL
Tb 11	175 MIL	131 MIL	44 MIL	219 MIL	0 MIL
Tb 12	188 MIL	141 MIL	47 MIL	235 MIL	0 MIL
Tb 13	200 MIL	150 MIL	50 MIL	250 MIL	0 MIL
Tb 14	225 MIL	167 MIL	56 MIL	281 MIL	0 MIL
Tb 15	250 MIL	189 MIL	63 MIL	313 MIL	0 MIL
Tb 16	500 MIL	375 MIL	125 MIL	625 MIL	0 MIL
Tb 17	119.99 MIL	91.19 MIL	31.19 MIL	0.01 MIL	3 MIL
Tb 18	74.39 MIL	55.19 MIL	19.19 MIL	0.01 MIL	3 MIL
Tb 19	374.39 MIL	280.79 MIL	148.79 MIL	0.01 MIL	3 MIL
Tb 20	451.19 MIL	338.39 MIL	112.79 MIL	0.01 MIL	3 MIL
Tb 21	320 MIL	240 MIL	80 MIL	0.01 MIL	3 MIL
Tb 22	100 MIL	64 MIL	24 MIL	0.01 MIL	3 MIL
Tb 23	200 MIL	152 MIL	52 MIL	0.01 MIL	3 MIL
Tb 24	124 MIL	92 MIL	32 MIL	0.01 MIL	3 MIL
Tb 25	624 MIL	468 MIL	248 MIL	0.01 MIL	3 MIL
Tb 26	752 MIL	564 MIL	188 MIL	0.01 MIL	3 MIL
Tb 27	200 MIL	148.8 MIL	49.6 MIL	0.01 MIL	3 MIL
Tb 28	8 MIL	5 MIL	5 MIL	14 MIL	3 MIL
Tb 29	20 MIL	14 MIL	6 MIL	21 MIL	3 MIL
Tb 30	31 MIL	23 MIL	8 MIL	39 MIL	3 MIL
Tb 31	10 MIL	8 MIL	8 MIL	8 MIL	3 MIL
Tb 32	63 MIL	47 MIL	16 MIL	79 MIL	3 MIL
Tb 33	63 MIL	47 MIL	16 MIL	79 MIL	3 MIL
Tb 34	63 MIL	47 MIL	16 MIL	79 MIL	3 MIL

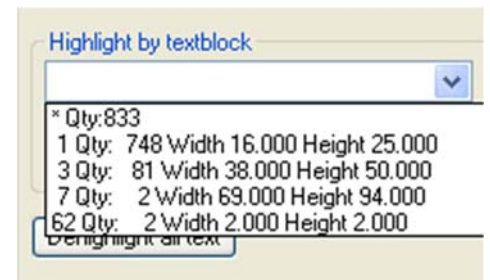
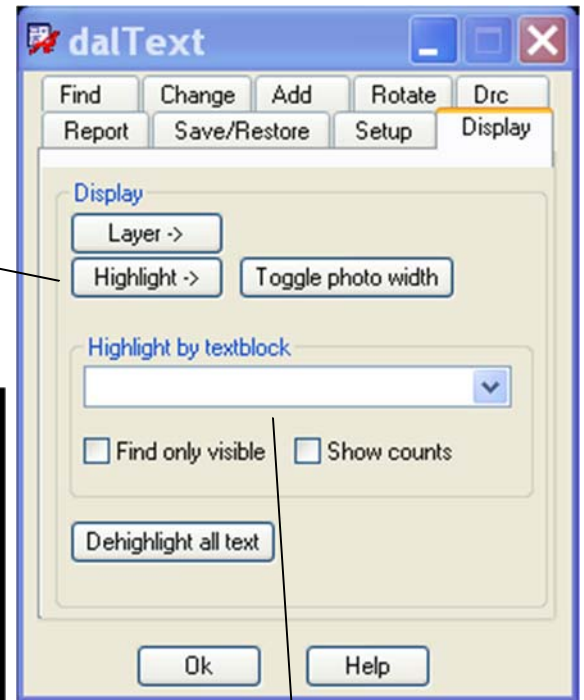
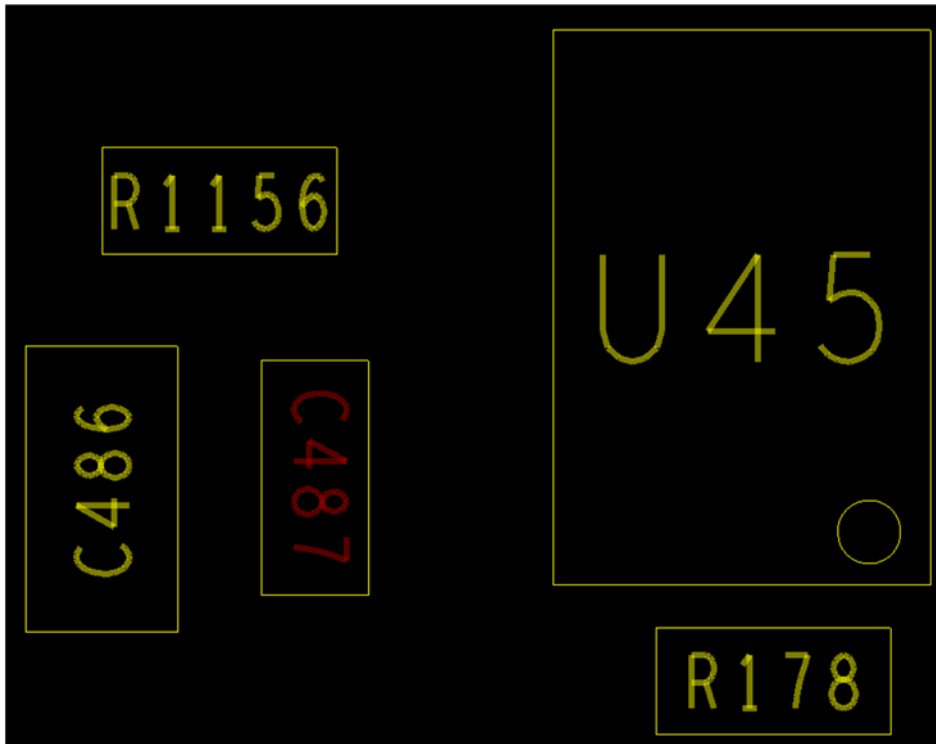
## Setup

---



## Display

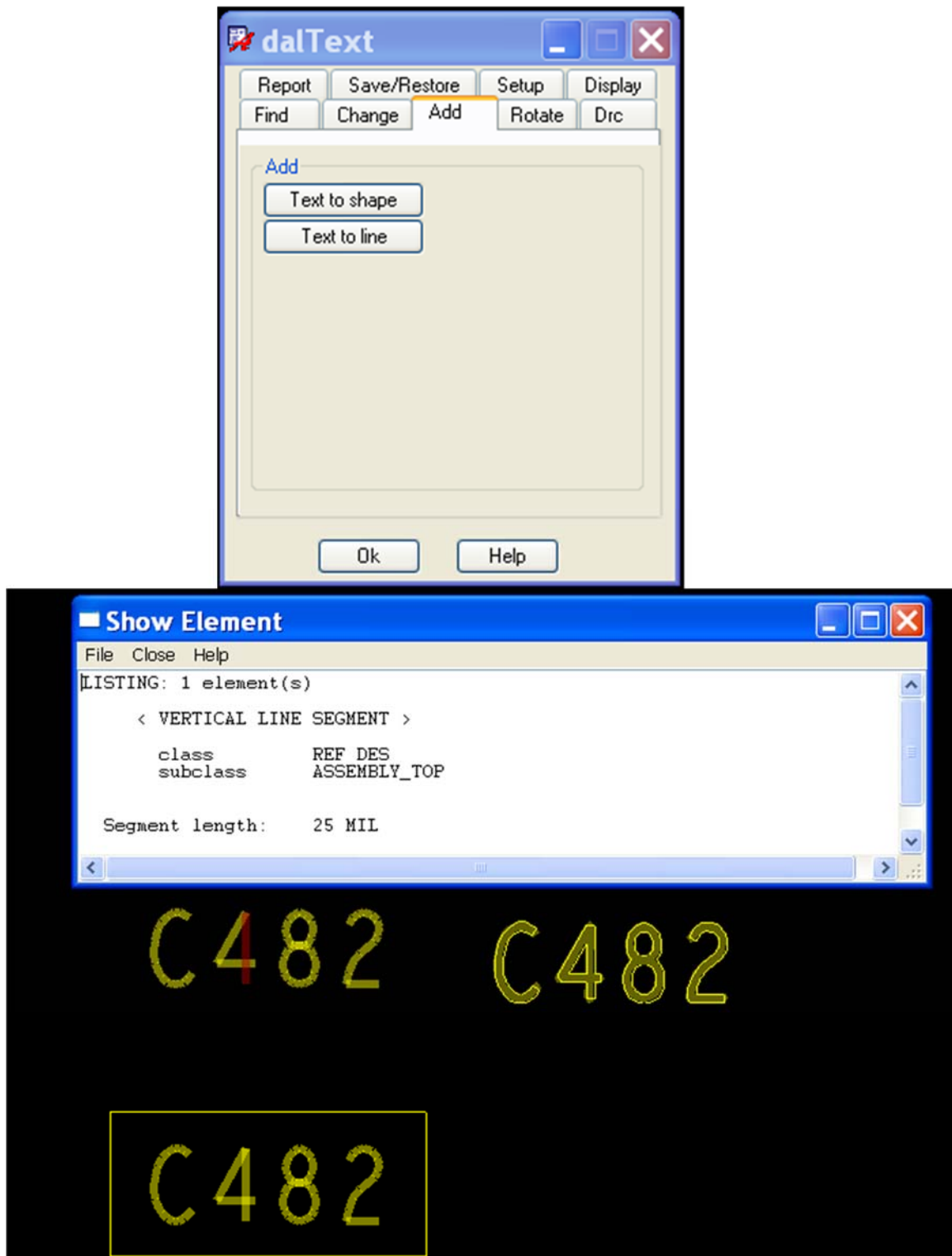
Text at 0  
Text at 90  
Text at 180  
Text at 270  
Text at odd angle



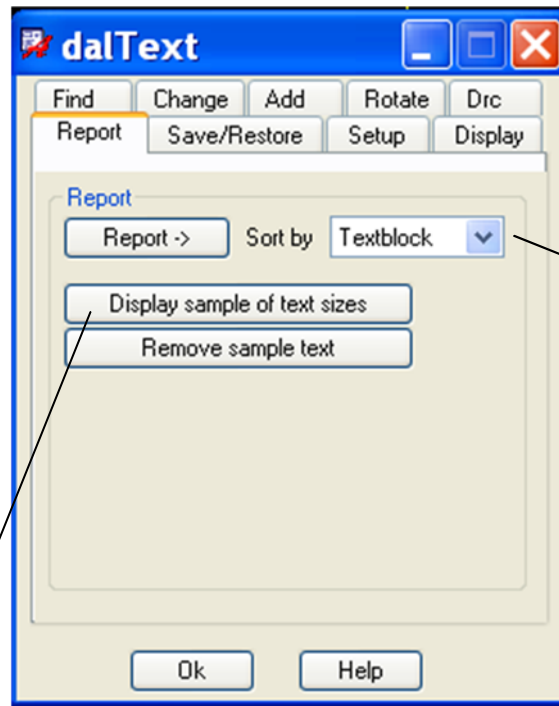


## Add

---



## Report



48 width 276.0 height 376.0  
47 width 152.0 height 200.0  
46 width 64.0 height 100.0  
45 width 372.0 height 500.0  
44 width 165.59 height 225.59  
43 width 200.88 height 270.0  
42 width 149.04 height 203.04  
41 width 82.08 height 108.0  
38 width 223.19 height 299.99  
37 width 91.19 height 119.99  
36 width 204.6 height 275.0  
35 width 83.6 height 110.0  
34 width 170.74 height 229.5  
32 width 423.0 height 564.0  
31 width 42.5 height 15.0  
30 width 167.39 height 224.99  
29 width 181.35 height 243.75  
28 width 195.3 height 262.5  
27 width 99.0 height 93.0  
26 width 141.0 height 189.0  
25 width 75.0 height 120.0  
24 width 114.0 height 150.0  
23 width 94.0 height 126.0  
22 width 35.0 height 42.0  
21 width 76.0 height 100.0  
19 width 158.1 height 212.5  
18 width 120.0 height 160.0  
16 width 375.0 height 500.0  
15 width 189.0 height 250.0  
14 width 167.0 height 225.0  
13 width 150.0 height 200.0  
12 width 141.0 height 188.0  
11 width 131.0 height 175.0  
10 width 117.0 height 156.0  
9 width 93.0 height 125.0  
8 width 75.0 height 100.0  
7 width 64.0 height 100.0  
6 width 60.0 height 85.0  
5 width 50.0 height 75.0  
4 width 45.0 height 75.0

# Custom Variables

dalTools Custom Variable (Text)

	Qty	Label	Text
1	1	End page	3
2	1	Part number	200-12340-001
3	1	REV	A
4	1	Start page	1

Ok Apply Cancel Note: Right click on row for more options

dal text

Report Save/Restore Setup Display  
Edit Change Add Rotate Drc

Multi edit  
Select

Pin number change  
Prefix: Suffix:  
Start #: 1 Increment: 1  
Re-number pins (select)

Custom variable (Text)  
Edit Add Other ->

Ok Help

- Delete all
- Report
- Highlight
- DeHighlight all text

Show Element

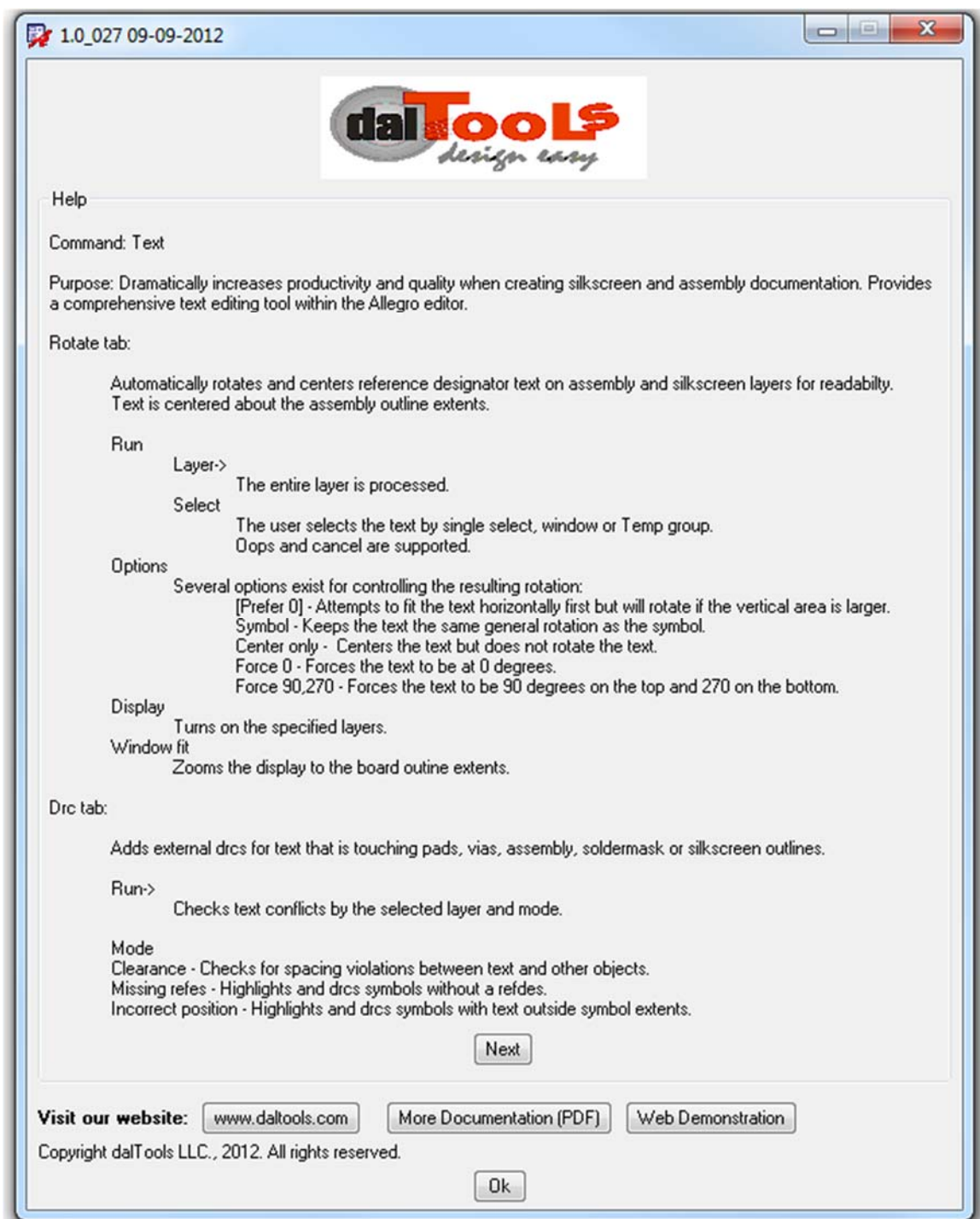
File Close Help

LISTING: 1 element(s)

```

< SHAPE >
  class      MANUFACTURING
  subclass   DTS_TEXT_VAR
  Shape is solid filled
  Area:      0.000044 (sq in)
  Exterior boundary:
  arc seg-xy (6282.37 63.36) xy (6282.37 63.36) width (0.00)
  center-xy: (6278.62 63.36) radius (3.75) CU
  Properties attached to shape
  DTS_TEXT_VAR = label "Start page" layer "DRAWING FORMAT/ASSY"
  
```

REV  
A  
SHEET: 1 OF 3





## Help

---

