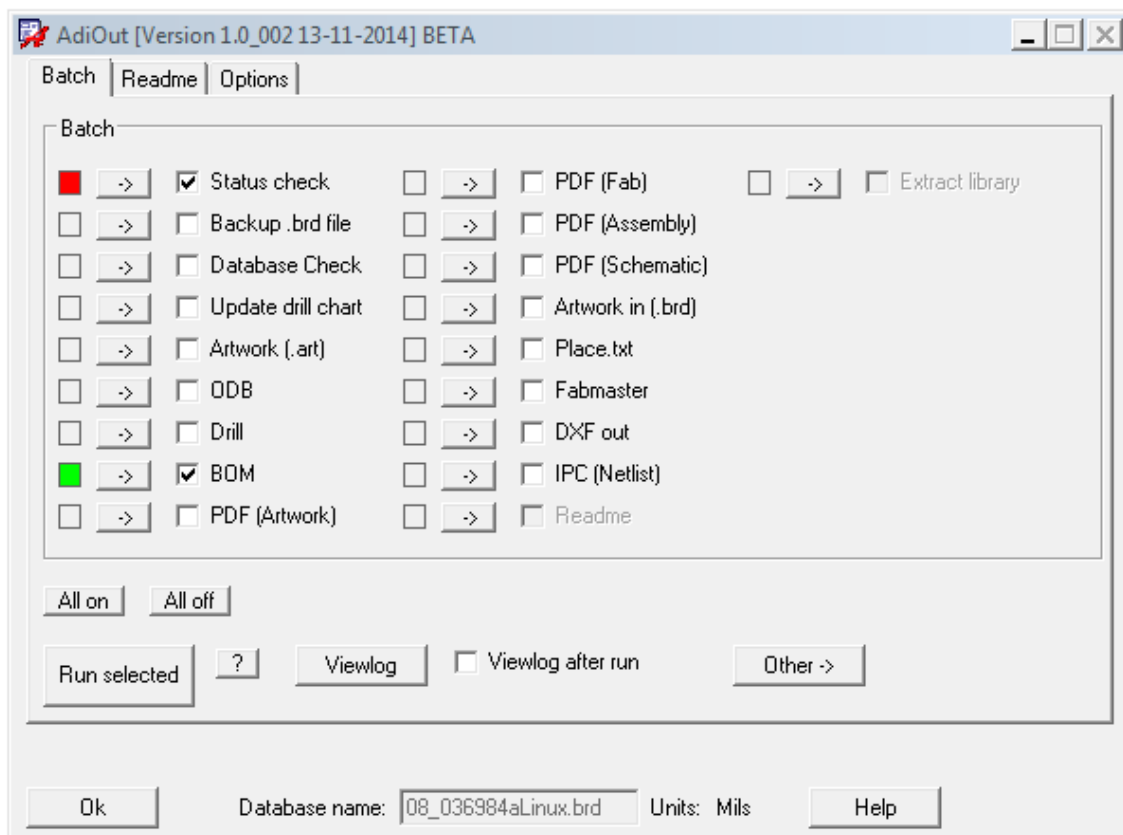


AdiOut

Automated output batch utility for Analog Devices Inc.

Features:

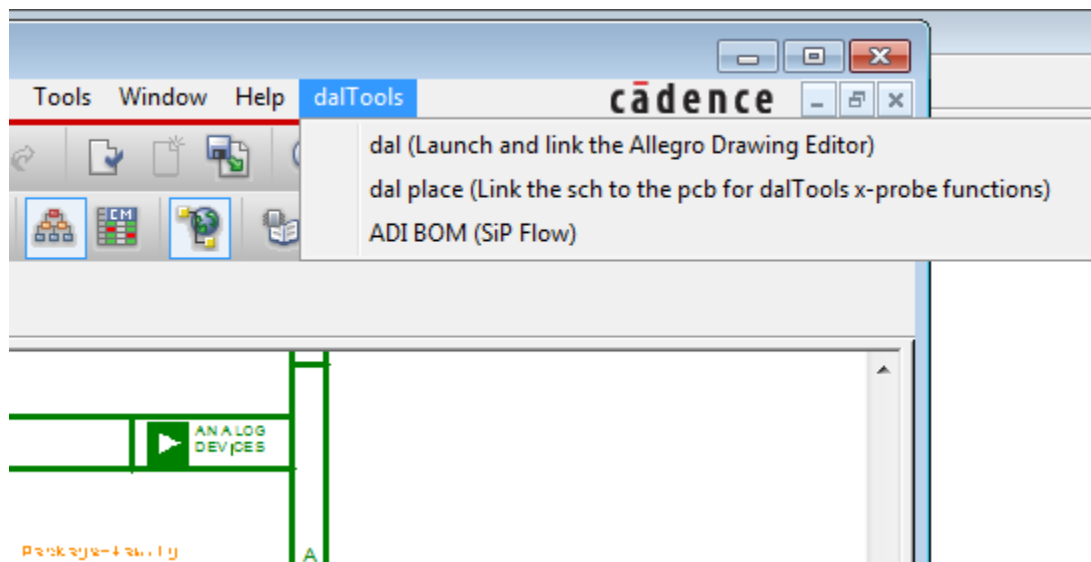
- ❑ Control panel with detailed logs.



Video demonstration available at:

www.dalTools.com

HDL BOM Extract From the HDL Editor



	A	B	C	D	E	F	G	H	I	J	K	L	M	N	O	P	Q	R	S	
1	TITLE: Bill of Materials																			
2	DATE: 10/13/2014																			
3	DESIGN: 02_036984a_top																			
4	BOM NO: 05-036984-01-a-1																			
5																				
6																				
7	ITEM#	WW_PN	DESCRIPTION	HLN	STAT	QTY	LOCATION	CATEGORY	VALUE	BODY_SIZE	VOLTAGE	WATTAGE	DIELECTRIC	TOL	FIELD1	FIELD2	SOLE_SOUR	SUGGESTED	SUGGESTED	DNI
8		1 E014942	CAP STD T REL			1	C1		10uF		25V				10 ?	?				?
9		2 E012419	CAP CER C PREF			1	C10A		1000pF		50V				5 ?	?				?
10		3 E012419	CAP CER C PREF			1	C10B		1000pF		50V				5 ?	?				?
11		4 E012419	CAP CER C PREF			1	C10C		1000pF		50V				5 ?	?				?
12		5 E012419	CAP CER C PREF			1	C10D		1000pF		50V				5 ?	?				?
13		6 E007204	CAP CER C REL			1	C11A		0.1UF		25V				10 ?	?				?

454	DNI Components List :																			
455	ITEM#	WW_PN	DESCRIPTION	HLN	STAT	QTY	LOCATION	CATEGORY	VALUE	BODY_SIZE	VOLTAGE	WATTAGE	DIELECTRIC	TOL	FIELD1	FIELD2	SOLE_SOU	SUGGESTED	SUGGESTED	DNI
456		1 E005347	CONN-PC REL			1	AVDD_A		5001						?	?				DNI
457		2 E005347	CONN-PC REL			1	AVDD_B		5001						?	?				DNI
458		3 E005347	CONN-PC REL			1	AVDD_C		5001						?	?				DNI
459		4 E005347	CONN-PC REL			1	AVDD_D		5001						?	?				DNI
460		5 E011865	CAP CER X PREF			1	C42A		0.1uF		50V				10 ?	?				DNI
461		6 E011865	CAP CER X PREF			1	C42B		0.1uF		50V				10 ?	?				DNI
462		7 E011865	CAP CER X PREF			1	C42C		0.1uF		50V				10 ?	?				DNI
463		8 E011865	CAP CER X PREF			1	C42D		0.1uF		50V				10 ?	?				DNI

Setup Instructions For the HDL BOM extracration

1. Add the following lines to the concepthdl.scr file:

```
mpsdeclare adibomhdl
    {This is exclusively for Analog Devices Inc.}
mpstool=dalHdlServerAdiBomHdl
mpstimeout=25
mpsruncmd="cnskill -nongraph dalHdlConfig.il" {Use -i option for debugging.}
```

2. Add the following lines in **red** to the concepthdl_menu.txt file:

```
    }
    "&Help" {
        "&Documentation" _HELP_CADENCE_DOC;
        "&Web Resources" {
            "cdn&Users.org" _HELP_WEB_PCB;
            "&Online Support" _HELP_WEB_SourceLink;
            "&Web Collaboration" _HELP_WEB_Collaboration;
            "&Education Services" _HELP_WEB_EducationServices;
        }
        SEPARATOR;
        "&About" _WINDOW_ABOUT;
    }
    "dalToolsDev" {
        "dal (Launch and link the Allegro Drawing Editor)" DAL;
        "dal place (Link the sch to the pcb for dalTools x-probe functions)"
DALPLACE;
        "ADI BOM (SiP Flow)" ADIBOMHDL;
    }
}
```

3. Add the following line to the concepthdl_cmd.txt file:

```
ADIBOMHDL "ADI BOM (SiP Flow)" "ADI BOM (SiP Flow)" "adibomhdl" ;
```

Help

