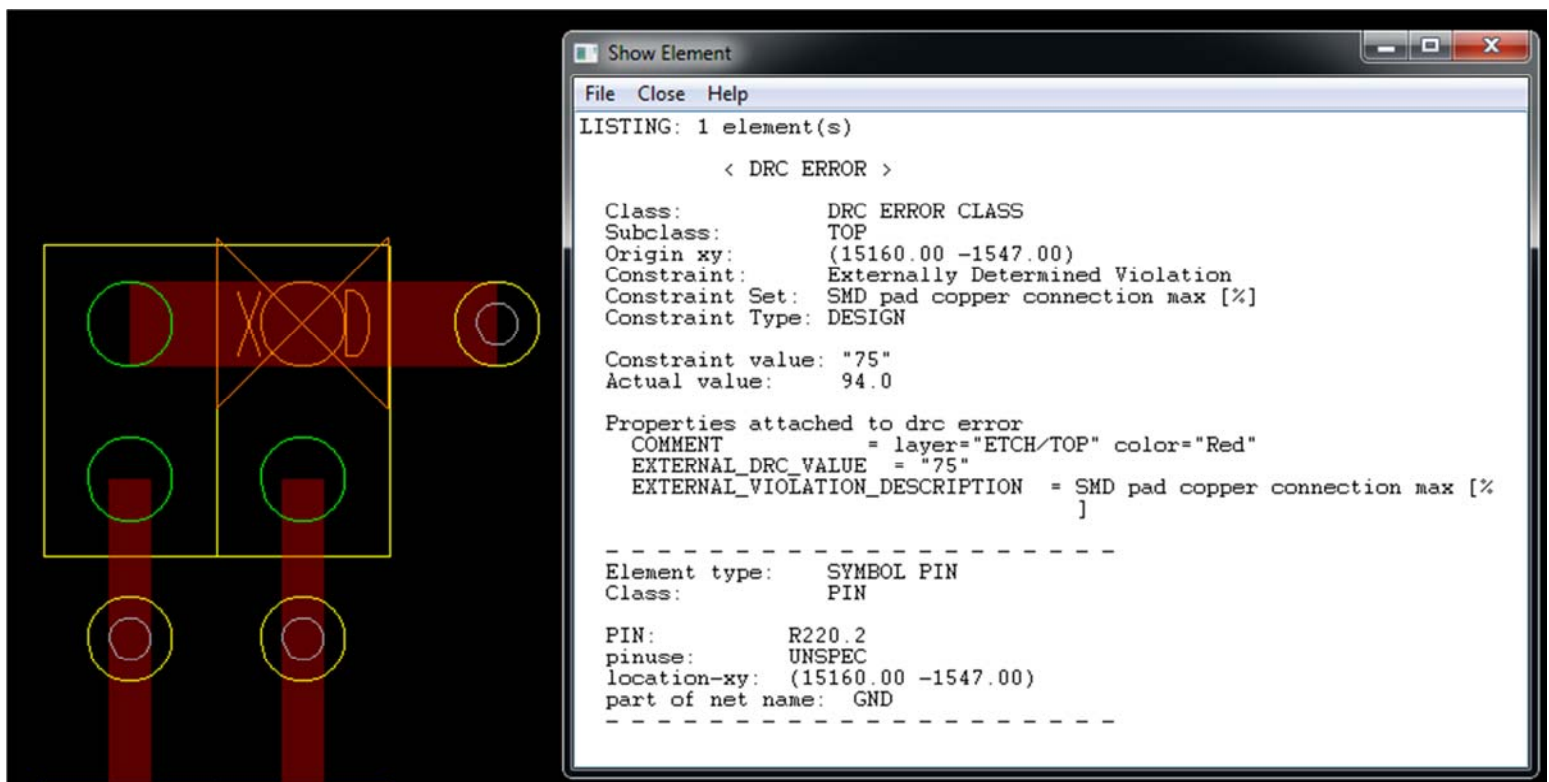
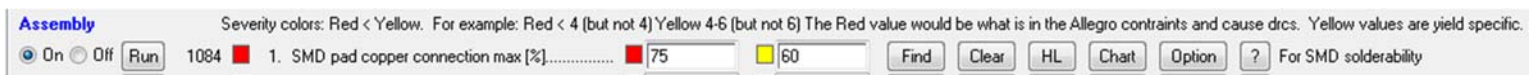


Assembly -> SMD Pad to Copper Connection Max %

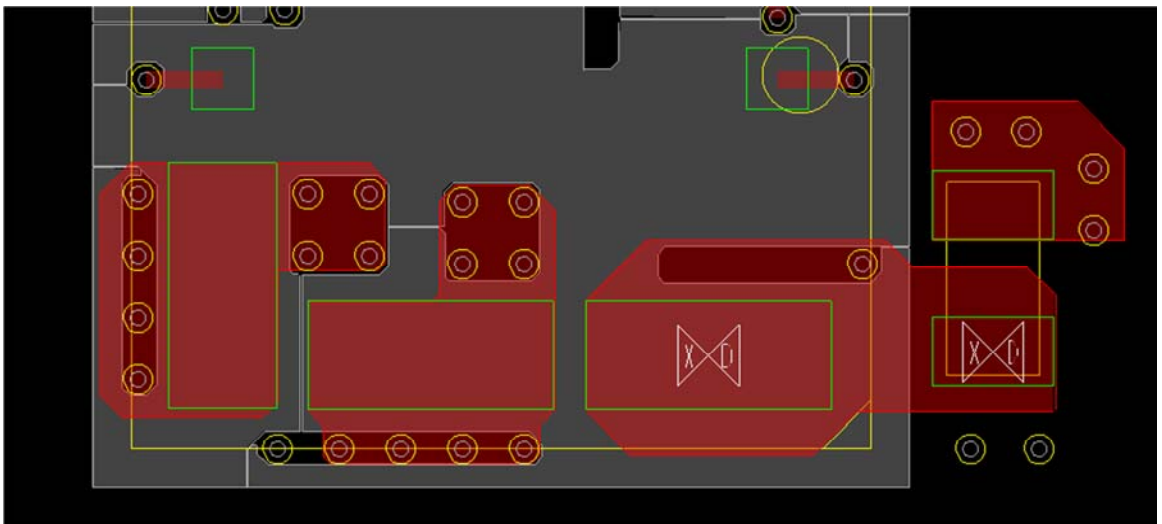
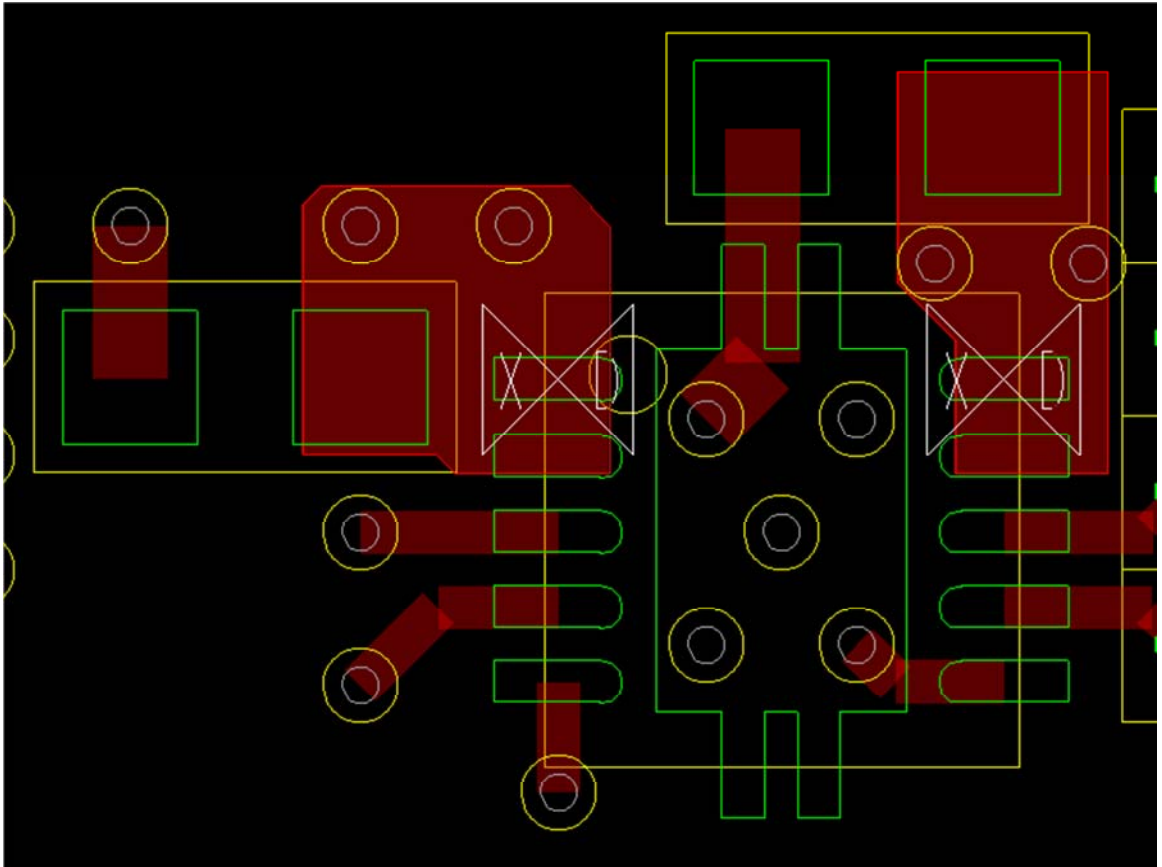
Reports SMT pad connection to copper overages by percentage coverage.

Features:

- ❑ Places an external DRC at the effected pin locations.
- ❑ Quickly find, highlight and correct problem areas.
- ❑ Configurable run options.



Examples



Find

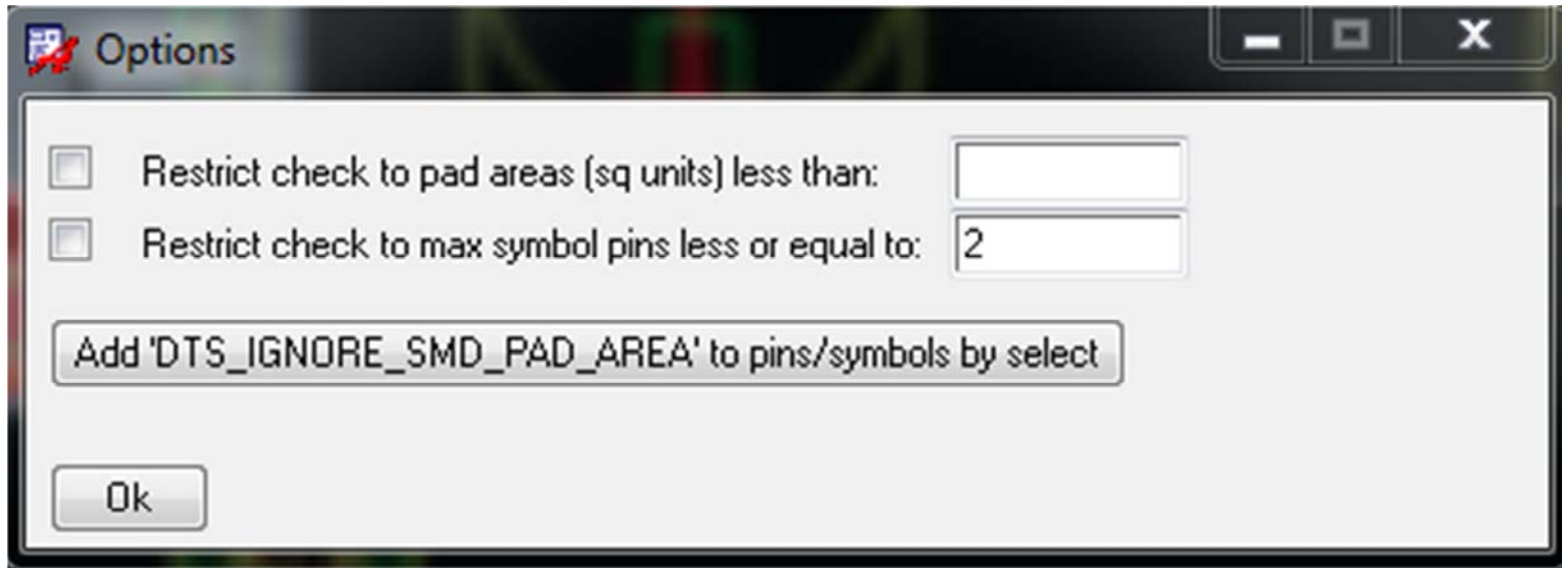
Find drc

Waive selected Attach property Filter by name Filter: < > =

	Constraint Set	Constraint Type	Location	Actual value	Constraint value	Name	Object 1	Object 2	Layer
1	SMD pad copper connection max	%DESIGN	{-209.97 859.33}	100.0	60	Externally Determined Violation	M00_MC1.121		ETCH/TOP
2	SMD pad copper connection max	%DESIGN	{-209.97 859.33}	100.0	75	Externally Determined Violation	M00_MC1.121		ETCH/TOP
3	SMD pad copper connection max	%DESIGN	{-209.97 1374.33}	100.0	60	Externally Determined Violation	M01_MC1.121		ETCH/TOP
4	SMD pad copper connection max	%DESIGN	{-209.97 1374.33}	100.0	75	Externally Determined Violation	M01_MC1.121		ETCH/TOP
5	SMD pad copper connection max	%DESIGN	{-209.97 1884.33}	100.0	60	Externally Determined Violation	M10_MC1.121		ETCH/TOP
6	SMD pad copper connection max	%DESIGN	{-209.97 1884.33}	100.0	75	Externally Determined Violation	M10_MC1.121		ETCH/TOP
7	SMD pad copper connection max	%DESIGN	{-209.97 2399.33}	100.0	60	Externally Determined Violation	M11_MC1.121		ETCH/TOP
8	SMD pad copper connection max	%DESIGN	{-209.97 2399.33}	100.0	75	Externally Determined Violation	M11_MC1.121		ETCH/TOP
9	SMD pad copper connection max	%DESIGN	{-209.97 2909.33}	100.0	60	Externally Determined Violation	M00_MC0.121		ETCH/TOP
10	SMD pad copper connection max	%DESIGN	{-209.97 2909.33}	100.0	75	Externally Determined Violation	M00_MC0.121		ETCH/TOP
11	SMD pad copper connection max	%DESIGN	{-209.97 3419.33}	100.0	60	Externally Determined Violation	M01_MC0.121		ETCH/TOP

Ok Items: 2251 Show element ☒ Zoom ☐ Center ☒ Change layers ☒ Highlight objects ☒ Highlight drc marker Report Dehighlight all

Options



The image shows a software dialog box titled "Options". It has a standard Windows-style title bar with minimize, maximize, and close buttons. The main area contains two unchecked checkboxes. The first checkbox is followed by the text "Restrict check to pad areas (sq units) less than:" and an empty text input field. The second checkbox is followed by the text "Restrict check to max symbol pins less or equal to:" and a text input field containing the number "2". Below these options is a button labeled "Add 'DTS_IGNORE_SMD_PAD_AREA' to pins/symbols by select". At the bottom left of the dialog is an "Ok" button.

☐ Restrict check to pad areas (sq units) less than:

☐ Restrict check to max symbol pins less or equal to:

Add 'DTS_IGNORE_SMD_PAD_AREA' to pins/symbols by select

Ok