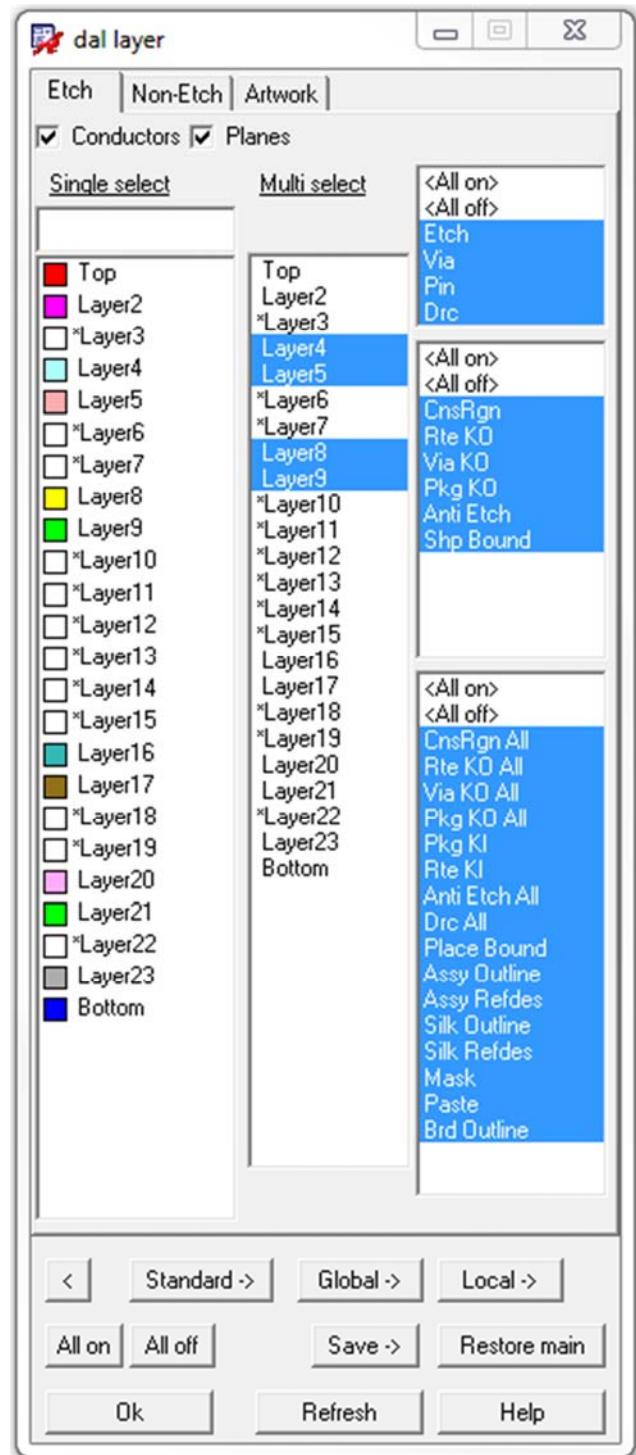


Layer

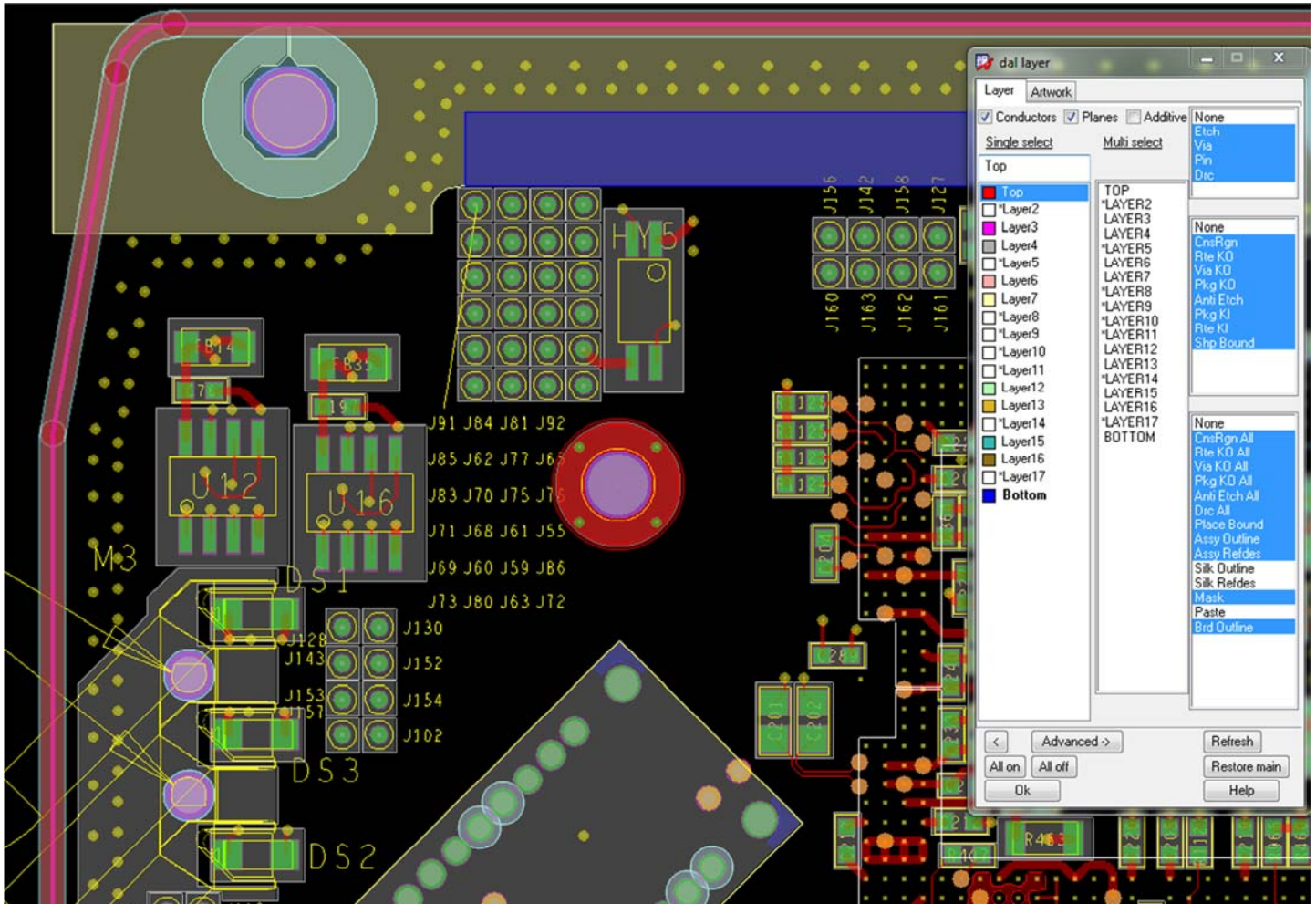
Greatly improves the standard layer visibility tab. It has many more options to control the layer display with multi select and built in associated layer control. This method is much faster and there is longer a need to use the color GUI when routing the design. The built in alias feature makes switching layers quick and easy also.

Features:

- ☐ Single click and multi click etch layer control with all associated layers configurable and included automatically. For example, layer specific keepin/keepout layers, etc.
- ☐ Tab for artwork film control display.
- ☐ Arrow keys cycle through the stackup layers.
- ☐ Quickly save and restore a "main" common display.
- ☐ Single click display presets for top and bottom silkscreen, solermask, pastemask and assembly layers.
- ☐ Expanded or contracted graphical user interface option.

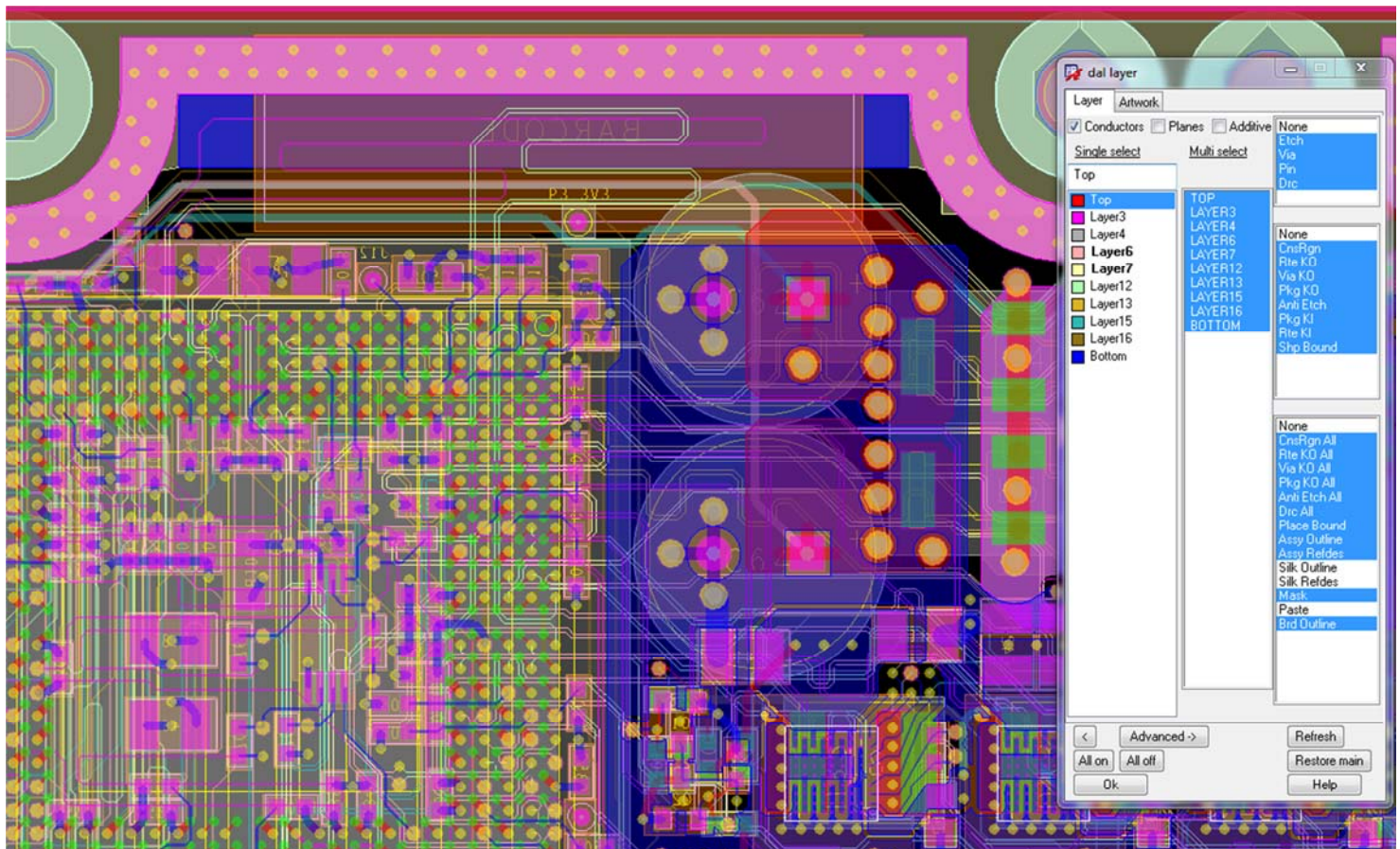


Example 1



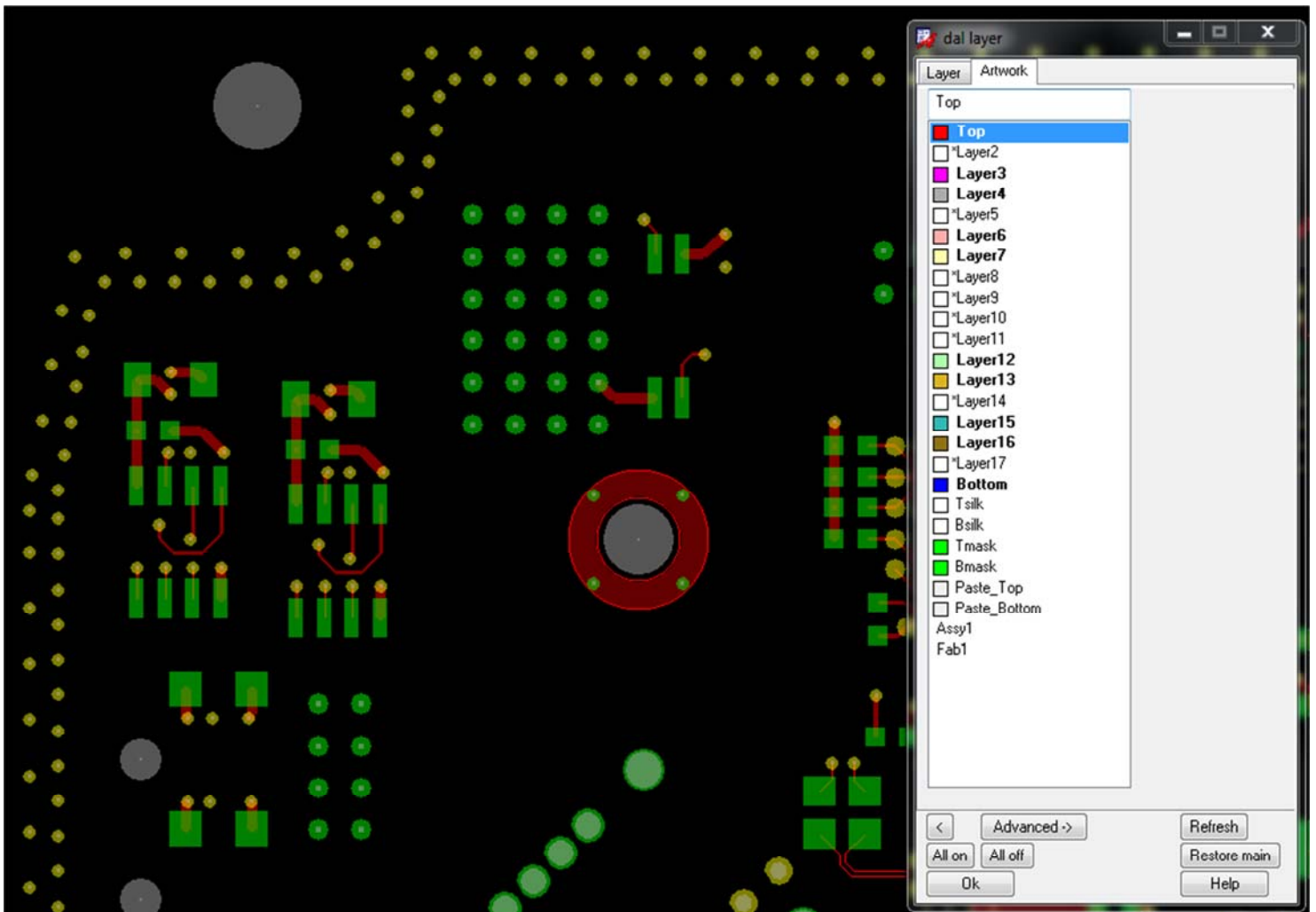
Associated keepin/keepout/etc layers are automatically displayed

Example 2



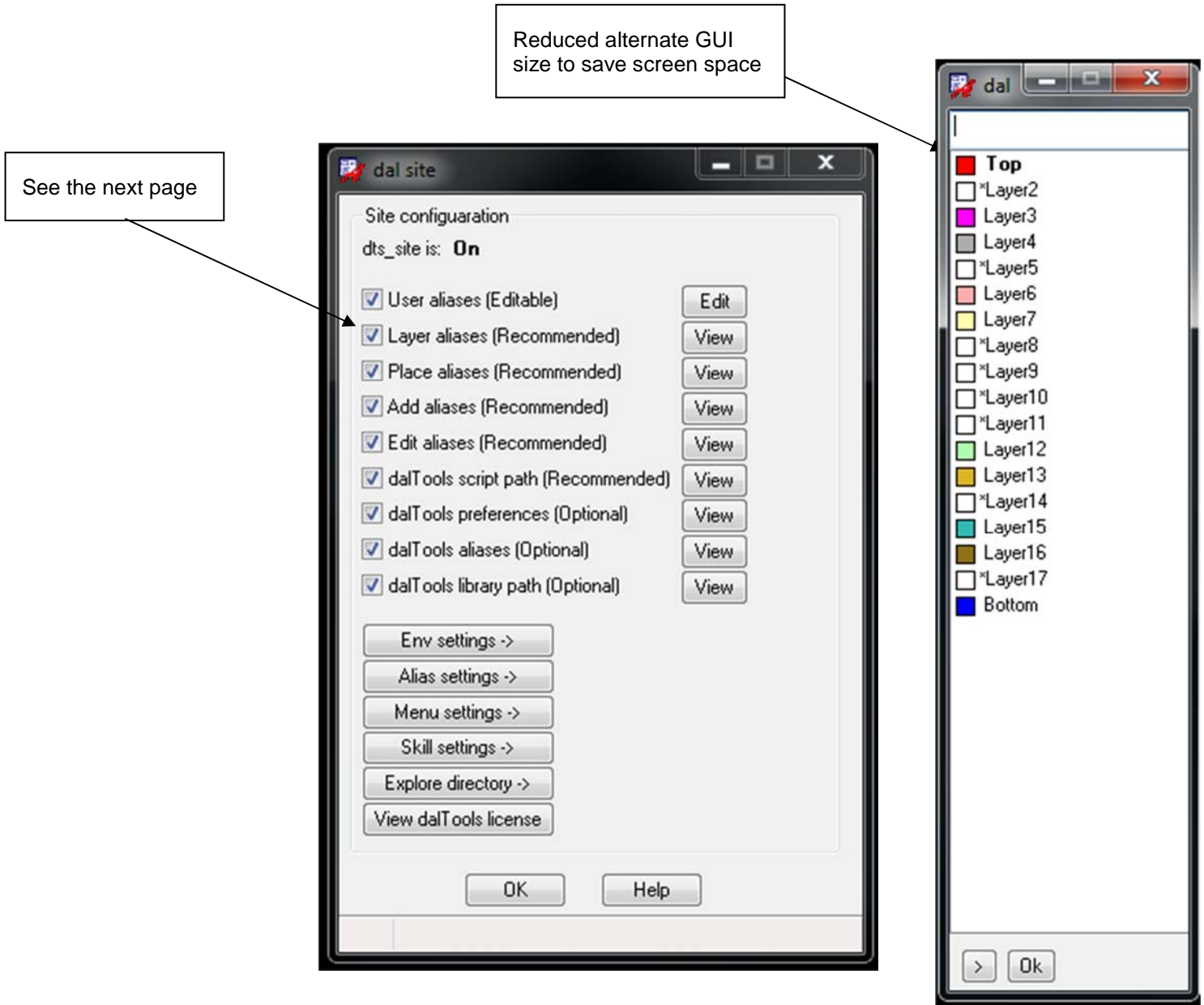
[Quick multi select mode layer control](#)

Example 3



[Sorted artwork film record layer control](#)

Aliases



Aliases cont

```
L:/Cadence/dalTools/DTS_1.0/share/site/config/layer/layer.env
File Close Help
#This file is computer generated. Any changes will be lost.
#Note: Comments at the end of line are ok if followed by ;#
# The aliases in this file are used by the "dal layer" program.
echo M- layer.env sourced.

alias l "dal layer";# Invoke the gui.

funckey + "dal layer next"; # Turn on only the next layer.
funckey - "dal layer back"; # Turn on only the previous layer.

funckey Pgup "dal layer back"; #
funckey Pgdown "dal layer next"; #

funckey Insert "dal layer cback"; #
funckey Del "dal layer cnext"; #

funckey Home "dal layer top"; #
funckey End "dal layer bot"; #

alias t "dal layer t";# Top layer on.
alias b dal layer b;# Bottom layer on.
alias top dal layer top;# Top layer on.
alias bot dal layer bot;# Bottom layer on.
alias tasy dal layer tasy;# Top assembly on.
alias basy dal layer basy;# Bottom assembly on.
alias tsilk dal layer tsilk;# Top silkscreen on.
alias bsilk dal layer bsilk;# Bottom silkscreen on.

alias 10 dal layer 0;# Turns all the etch layers on.
alias 11 dal layer 1;alias 12 dal layer 2;alias 13 dal layer 3;alias 14 dal layer 4;alias 15 dal layer 5
alias 16 dal layer 6;alias 17 dal layer 7;alias 18 dal layer 8;alias 19 dal layer 9;alias 110 dal layer 10
alias 111 dal layer 11;alias 112 dal layer 12;alias 113 dal layer 13;alias 114 dal layer 14;alias 115 dal layer 15
alias 116 dal layer 16;alias 117 dal layer 17;alias 118 dal layer 18;alias 119 dal layer 19;alias 120 dal layer 20
alias 121 dal layer 21;alias 122 dal layer 22;alias 123 dal layer 23;alias 124 dal layer 24;alias 125 dal layer 25
alias 126 dal layer 26;alias 127 dal layer 27;alias 128 dal layer 28;alias 129 dal layer 29;alias 130 dal layer 30
alias 131 dal layer 31;alias 132 dal layer 32;alias 133 dal layer 33;alias 134 dal layer 34;alias 135 dal layer 35
alias 136 dal layer 36;alias 137 dal layer 37;alias 138 dal layer 38;alias 139 dal layer 39;alias 140 dal layer 40
alias 141 dal layer 41;alias 142 dal layer 42;alias 143 dal layer 43;alias 144 dal layer 44;alias 145 dal layer 45
alias 146 dal layer 46;alias 147 dal layer 47;alias 148 dal layer 48;alias 149 dal layer 49;alias 150 dal layer 50
```

Help

