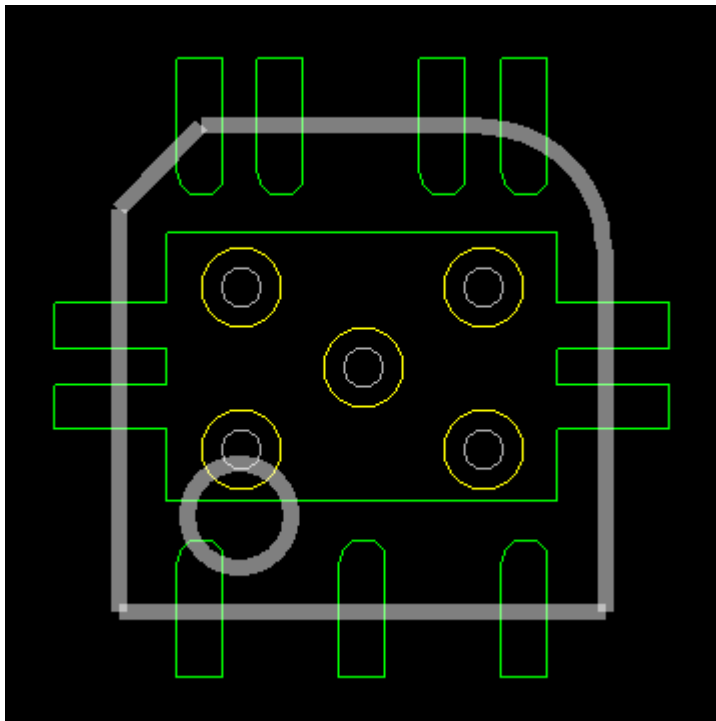


Library -> Silk line to pad

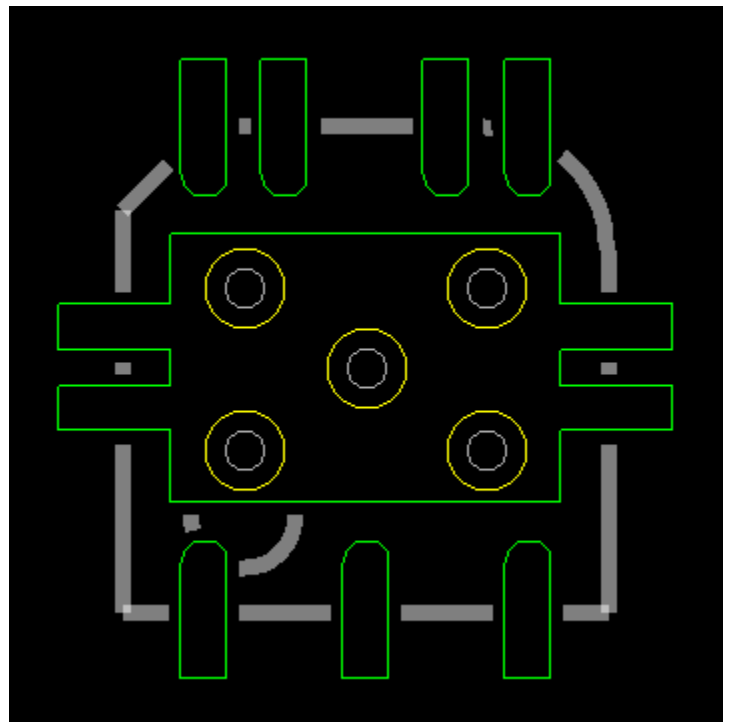
Checks/Trims silk lines to pads.

Features:

- ❑ Automatically checks and/or clears silkscreen lines from pads by a specified clearance.

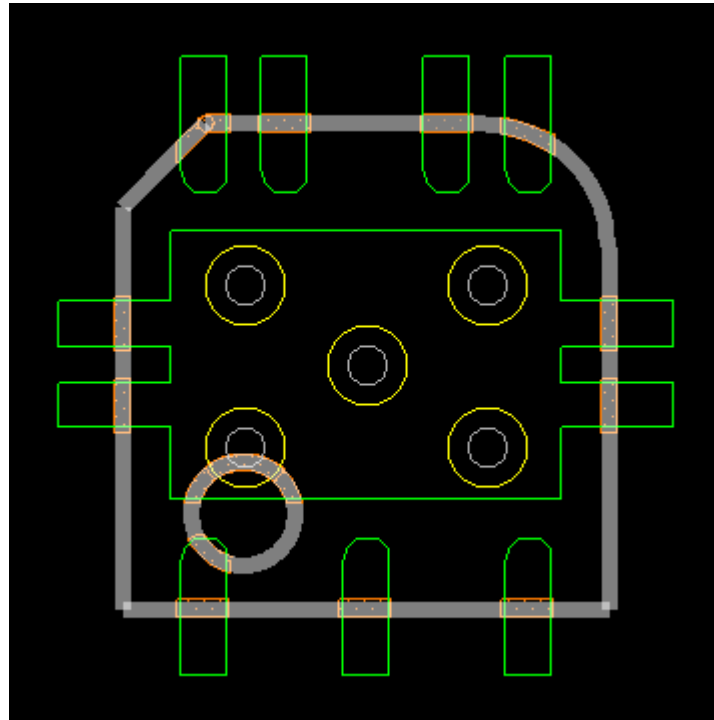


Before



After

Examples



**Check Results
(Notice overlaps)**

Find

Find drc

Filter: < > =

	Constraint Set	Constraint Type	Location	Actual value	Constraint value	Name	Object 1	Object 2	Layer
1	Silk line to pad		(28.19005 58.7)		1.0	SMP28XP85MM_DOME, 7	Smp28xp85mm	Package Geom	PACKAGE GEOMETRY/SILK ^
2	Silk line to pad		(30.85995 58.637)		1.0	SMP28XP85MM_DOME, 6	Smp28xp85mm	Package Geom	PACKAGE GEOMETRY/SILK
3	Silk line to pad		(8.51005 -59.2)		1.0	SMP28XP85MM_DOME, 3	Smp28xp85mm	Package Geom	PACKAGE GEOMETRY/SILK
4	Silk line to pad		(47.88005 -59.2)		1.0	SMP28XP85MM_DOME, 5	Smp28xp85mm	Package Geom	PACKAGE GEOMETRY/SILK
5	Silk line to pad		(-30.85995 58.7)		1.0	SMP28XP85MM_DOME, 10	Smp28xp85mm	Package Geom	PACKAGE GEOMETRY/SILK
6	Silk line to pad		(-47.88005 49.875)		1.0	SMP28XP85MM_DOME, 10	Smp28xp85mm	Package Geom	PACKAGE GEOMETRY/SILK
7	Silk line to pad		(-11.16995 58.7)		1.0	SMP28XP85MM_DOME, 9	Smp28xp85mm	Package Geom	PACKAGE GEOMETRY/SILK
8	Silk line to pad		(-39.73626 -27.68)		1.0	NOT ON A NET, VIA_10_20, (-29.4	Not On A Net, Vi	Package Geom	PACKAGE GEOMETRY/SILK
9	Silk line to pad		(-42.41457 -39.14)		1.0	SMP28XP85MM_DOME, 1	Smp28xp85mm	Package Geom	PACKAGE GEOMETRY/SILK
10	Silk line to pad		(-30.85995 -59.2)		1.0	SMP28XP85MM_DOME, 1	Smp28xp85mm	Package Geom	PACKAGE GEOMETRY/SILK
11	Silk line to pad		(-17.20426 -35.48)		1.0	SON10_CENTER_PAD, 11	Son10_Center_	Package Geom	PACKAGE GEOMETRY/SILK
12	Silk line to pad		(-59.06 18.35005)		1.0	SON10_CENTER_PAD, 11	Son10_Center_	Package Geom	PACKAGE GEOMETRY/SILK v

Items: 13
 ☐ Show element
 ☒ Zoom
 ☐ Center
 ☒ Change layers
 ☒ Highlight objects
 ☒ Highlight drc marker

Options

Option	
	Auto remove (Silk line violations)
	Manual remove (By pad select visible)
	Flash (Silk line violations)
	Clear violation graphics
	Turn on top layers
	Turn on bottom layers
	Turn on top and bottom layers