

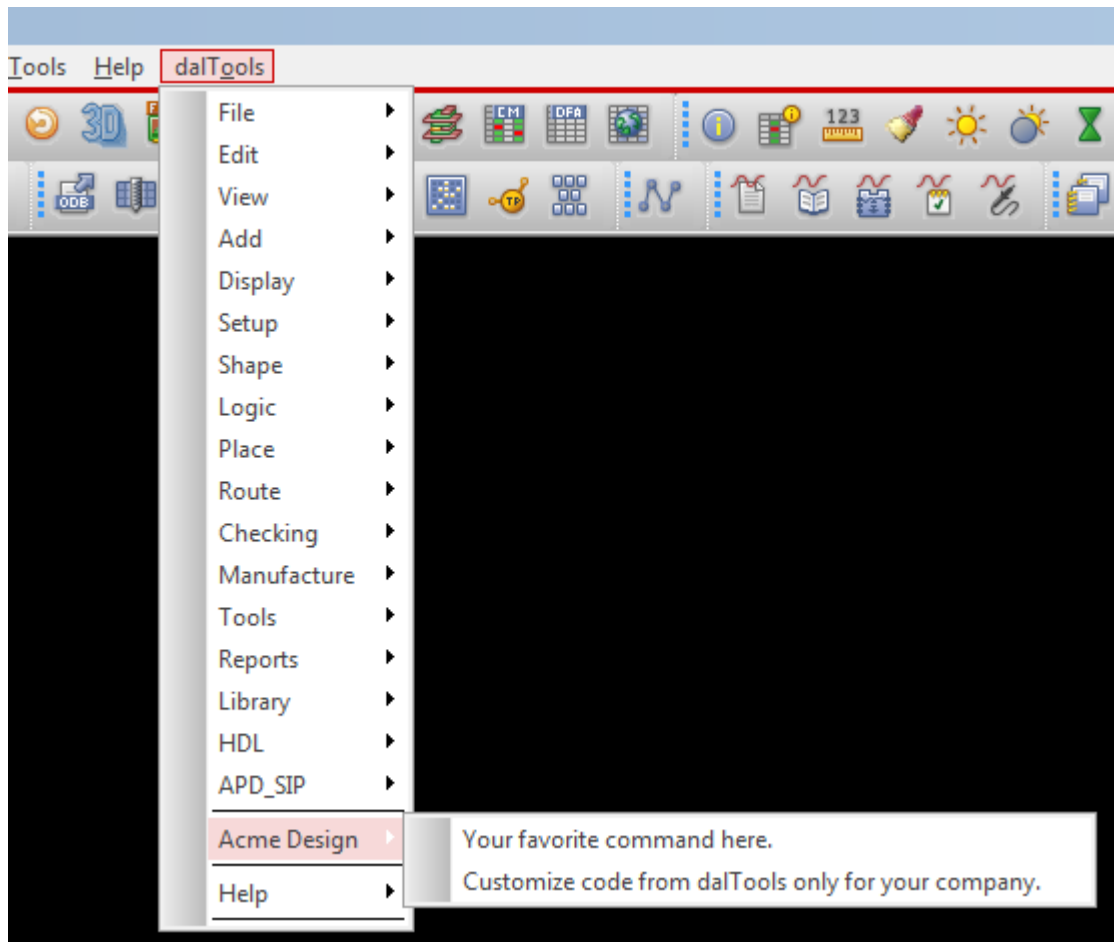
Installation and Setup

1. Download the dalTools .exe or .zip file from daltools.com under the support tab.
2. For the initial installation please copy the **example_allegro.ilinit** file in the dalTools/setup directory to your \$localenv directory. Software update downloads can stop here and skip steps 3-6.
3. To find the location of your \$localenv directory type this on the Allegro command line: echo \$localenv.
4. Copy the contents of the example_allegro.ilint file to your existing one OR rename the file removing the "example_ prefix" so the file is simply allegro.ilinit in your \$localenv directory. The allegro.ilinit file in the \$localenv directory acts as a SKILL batch command when Allegro starts and will setup the required dalTools environment for the program and software license locations.
5. Open the allegro.ilinit file and follow the instructions in the file to change the paths and license locations.
6. Start Allegro and the dalTools menu should appear in the upper right of the screen.

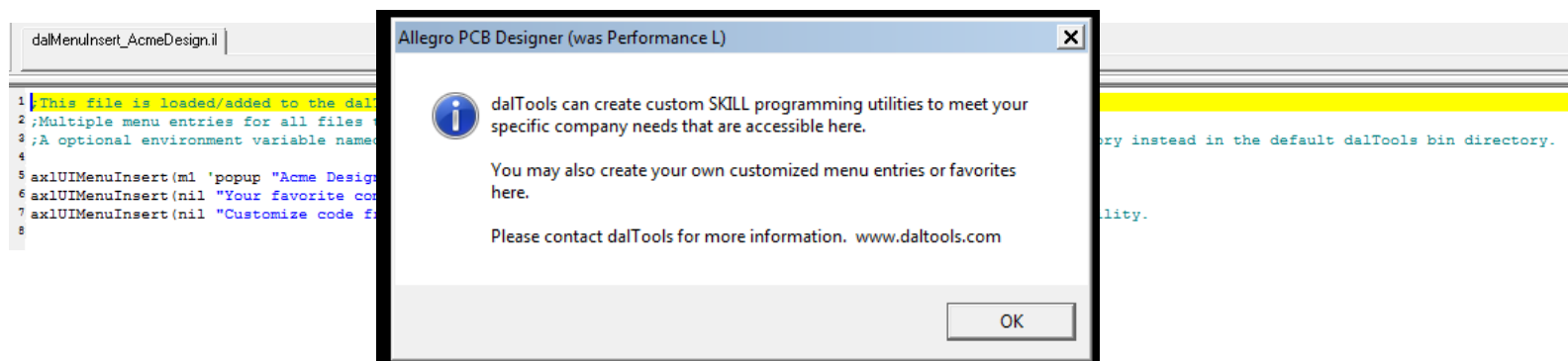
Email Dal Locke dal@daltools.com if you need help or have any questions.

Customized Company Menu Option

You may add your own **company specific or favorite menu items** to the dalTools menu as show below:

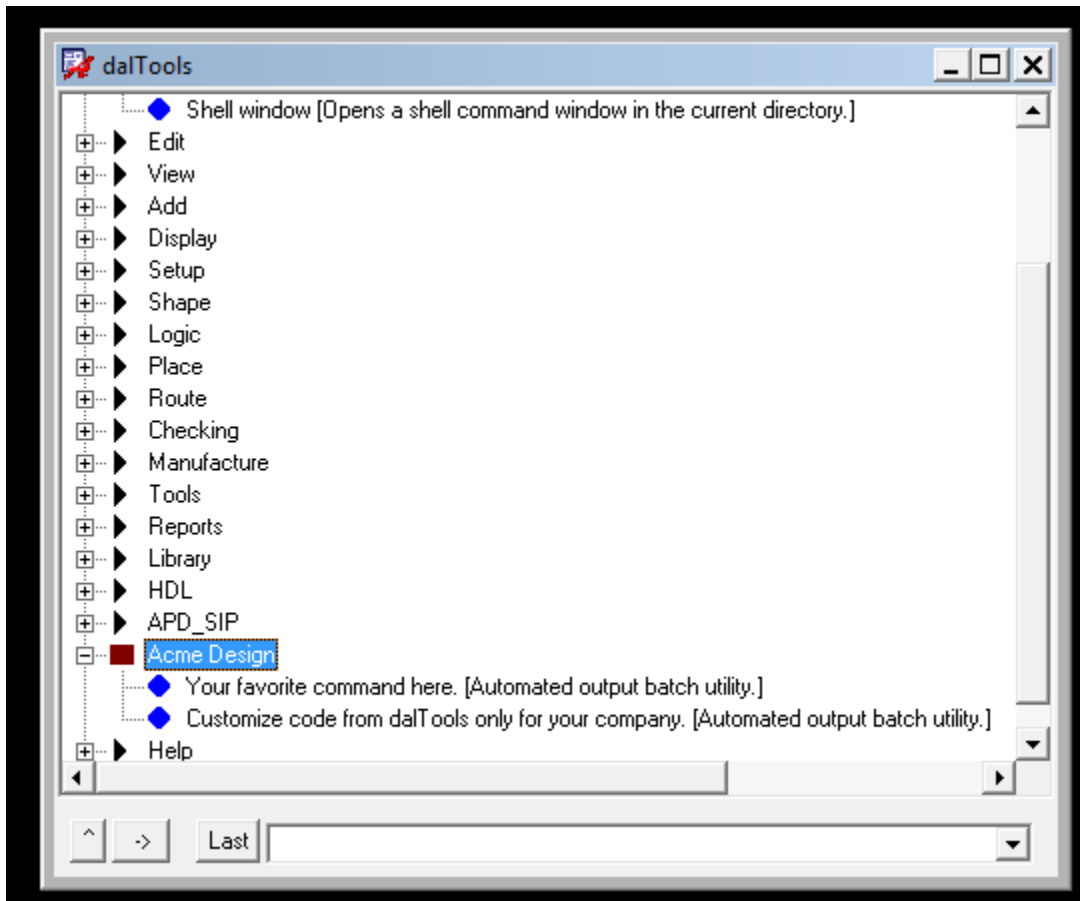


The menu items could also be customized commands created specifically for your company by dalTools. Contact dalTools for more information about this service.



This file when located in the dalTools bin directory will automatically be added to the dalTools menu at the bottom. Also note that you may have more than one file that will add multiple entries in the menu.

The dal menu command also displays the customized entries:



Menu (cont)

A sample menu template file is located here: ...\\dalTools\\DTS_1.0\\share\\site\\menus

If you would like to locate the menu file in a location other than the dalTools/bin directory you may set the following variable in the env file or allegro.ilinit file to point to another location:

Ex: DTS_MENU_CUSTOM = your /customDefined/menuPath

Or in the allegro.ilinit file:

`axlSetVariable("dts_menu_custom" "your/customDefined/menuPath") ;Sets the custom defined menupath.`

Note: If you don't want your company specific menu to show up in the dalTools menu, add the following line to your allegro.ilinit file before the dalTools line (`axlShell("source ./dts_site/dts.env"),dtsRoot=getShellEnvVa.....`):

`axlSetVariable("dts_no_menu_custom" t) ;Disables the custom company menu.`